

MOTAK

Project Name: _____

Location: _____

Item #: _____

Qty: _____

MoTak Worktop Freezer, 3 Doors, 16 cu ft Capacity, in Stainless Steel

MFWT-3S



Keep frozen ingredients within easy reach and maximize your prep space with the MoTak Worktop Freezer. Combining frozen storage and prep space in one convenient footprint, this 3 door worktop freezer is a popular choice for commercial kitchens in restaurants, cafes, diners, bakeries, and food trucks. The unit offers 16 cubic foot capacity for storage of frozen goods. The commercial worktop freezer is crafted with durable stainless steel for long-lasting use. This unit features a stainless steel worktop for food prep and undercounter storage to support fast-paced kitchens.

FEATURES AND CONSTRUCTION

- Offers 16 cu ft capacity for storage of frozen goods
- Equipped with a powerful compressor for efficient cooling
- Constructed of durable stainless steel for long-lasting use
- Maintains a temperature range of -7° to 0°F for optimal frozen storage
- Utilizes eco-friendly R290 refrigerant for sustainable operation
- Operates on 115V with a NEMA-5-15P plug for standard electrical connections
- Includes 3 shelves to organize and store frozen food and ingredients
- Equipped with 4 casters for mobility, making it easy to clean around
- Polished stainless steel doors enhance durability and ease of cleaning
- Freestanding installation allows for versatile placement

ELECTRIC

115V / 60Hz / 1Ph
Cord Length (Inches): 98.50
Plug Type: NEMA 5-15P
Cord set included

NEMA 5-15P



3RD PARTY APPROVALS



Intertek



Intertek

WARRANTY (USA / CANADA)

STORAGE CAPACITY

- Cubic Feet: 16 cu. ft.

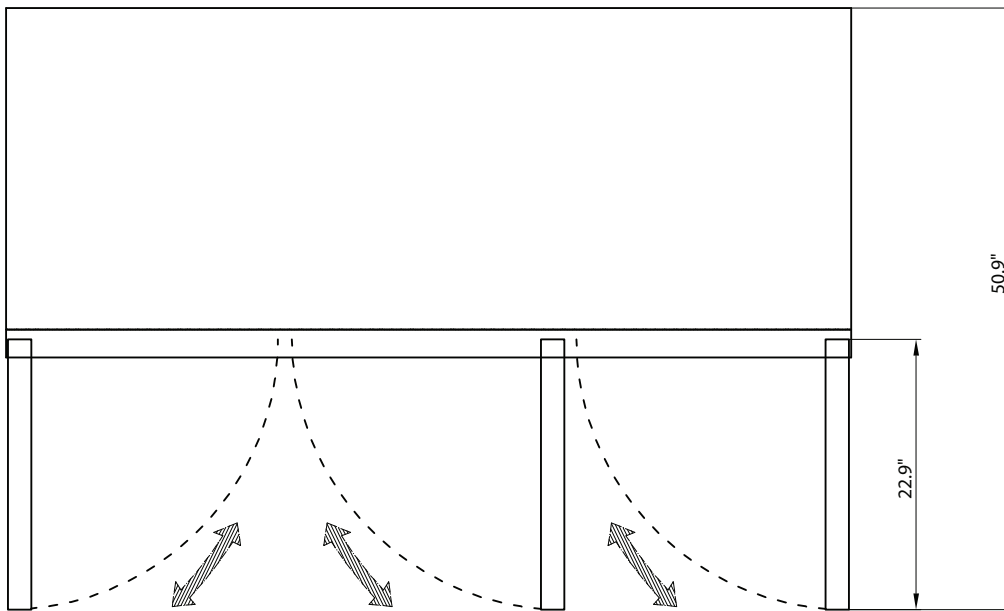
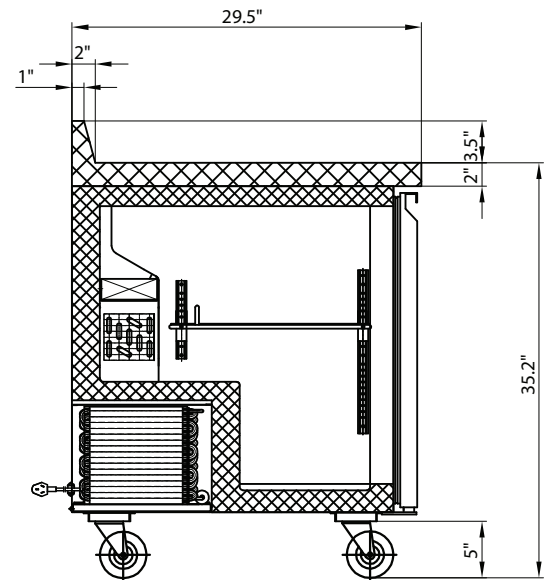
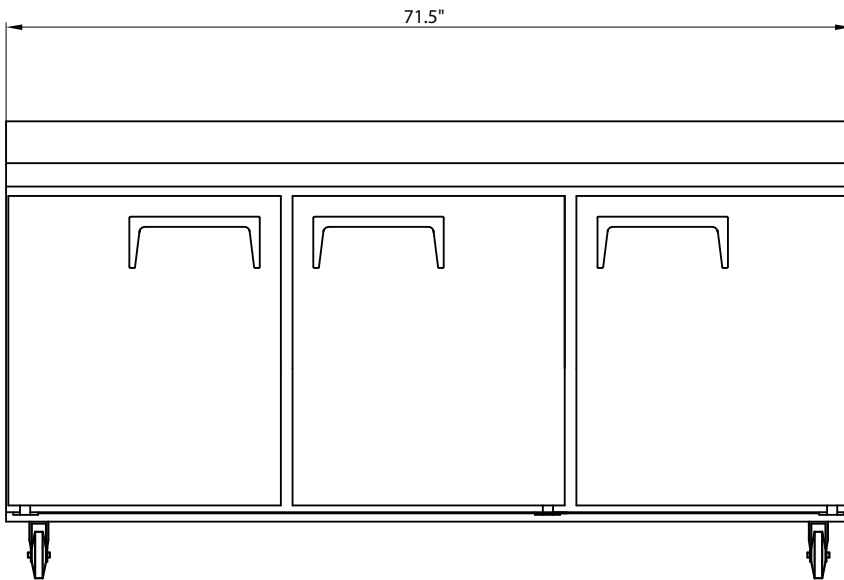
TEMPERATURE

- Holding Temperature (Fahrenheit): -7 - 0

These models are designed to operate in an environment where temperature and humidity do not exceed 75°F (24°C) and 55% relative humidity

MOTAK MoTak Worktop Freezer

MFWT-3S



Worktop

Doors	Shelves	Amps	HP	Capacity	Refrigerant Type / Oz.	Assembled Dimensions (in)	Item Weight lbs	Shipping Weight lbs
3	3	4.5	4/5	16 cu. ft.	R290 3.88	29.50" x 71.50" x 35.20"	297.0	369.60

Due to periodic changes in designs, methods, procedures, policies and regulations, the specifications contained in this document are subject to change without notice. While we exercise good faith efforts to provide information that is accurate, we are not responsible for errors or omissions in information provided or conclusions reached as a result of using the specifications. By using the information provided, the user assumes all risks in connection with such use.