

## MoTak 2 Door Worktop Freezer, in Stainless Steel

### MFWT-2SW



Designed to optimize space in commercial kitchens, the MoTak 2 Door Worktop Freezer is ideal for smaller establishments where space efficiency is crucial. This commercial worktop freezer features a stainless steel worktop with a backsplash that helps protect the wall behind the unit, maintaining a cleaner workspace. The worktop is ideal for food preparation, plating or storing small appliances. The freezer section has two doors with recessed handles and offers 15.7 cubic feet of frozen storage.

### FEATURES AND CONSTRUCTION

- Stainless steel worktop with backsplash
- 15.7 cu ft of frozen storage
- 2 self-closing doors with recessed handles
- 2 adjustable plastic-coated wire shelves for organizing ingredients
- -8° to 0°F temperature range for storing frozen foods and ingredients
- Digital temperature controller with LED display
- Auto defrost
- Painted aluminum interior
- (4) 4" casters (2 locking and 2 non-locking) for easy mobility
- Space-saving design is ideal for smaller commercial kitchens
- Rear-mounted self-contained refrigeration

### ELECTRIC

115V / 60Hz / 1Ph  
Cord Length (Inches): 98.40"  
Plug Type: NEMA 5-15P  
Cord set included

NEMA 5-15P



### 3RD PARTY APPROVALS



Intertek



Intertek

### WARRANTY (USA / CANADA)

### NOMINAL STORAGE CAPACITY

- Cubic Feet: 15.7 cu. ft.

### TEMPERATURE

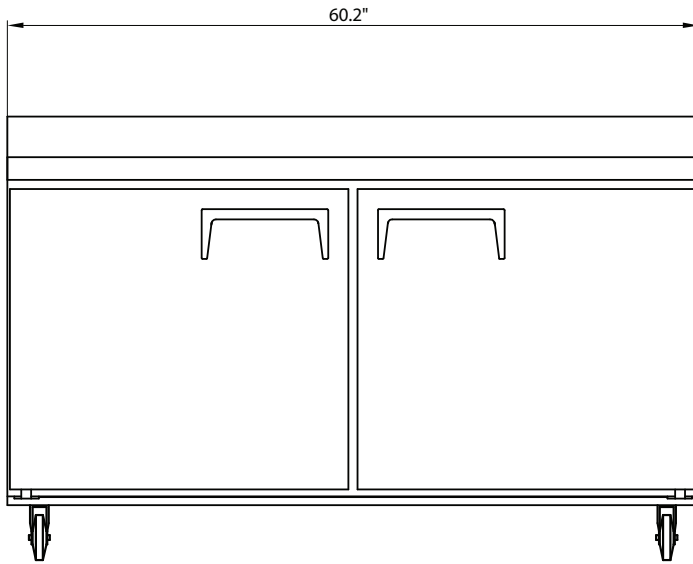
- Holding Temperature (Fahrenheit): -8 - 0

These models are designed to operate in an environment where temperature and humidity do not exceed 75°F (24°C) and 55% relative humidity

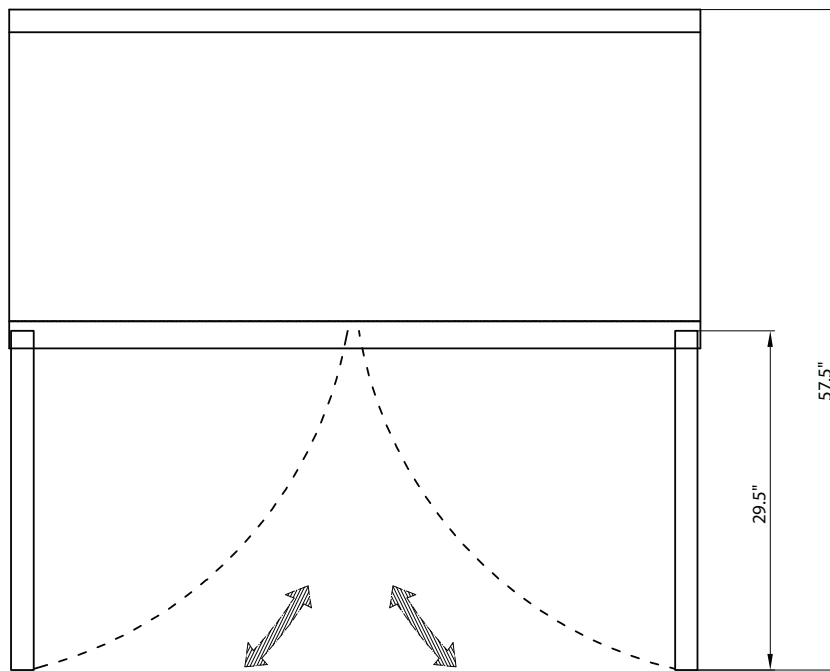
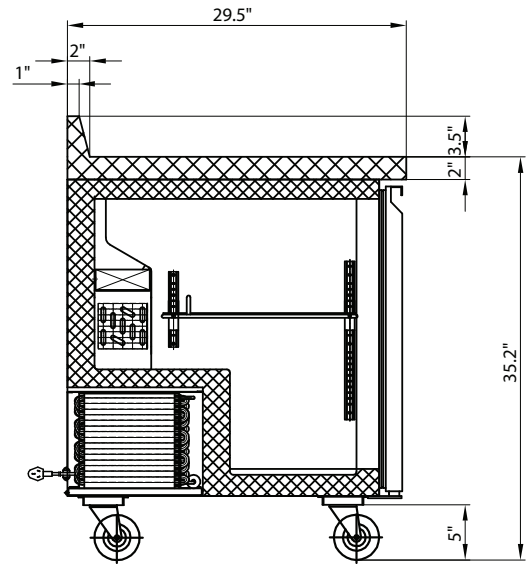
# MOTAK MoTak 2 Door Worktop Freezer

MFWT-2SW

FRONT



SIDE



TOP

## Worktop

Doors	Shelves	Amps	HP	Capacity	Refrigerant Type / Ounces	Assembled Dimensions (in)	Item Weight lbs	Shipping Weight lbs
2	2	4.5A	1/5	15.7 cu. ft.	R290 / 3.883	29.50" x 60.20" x 38.70"	253.0	334.00

Due to periodic changes in designs, methods, procedures, policies and regulations, the specifications contained in this document are subject to change without notice. While we exercise good faith efforts to provide information that is accurate, we are not responsible for errors or omissions in information provided or conclusions reached as a result of using the specifications. By using the information provided, the user assumes all risks in connection with such use.