

MOTAK

Gas Griddle Countertop Model

Model #: **MGR 24(-T), 36(-T), 48(-T)**

Available with manual or thermostatic controls, these griddles have $\frac{3}{4}$ " plates that provide more-even heat distribution. Their "quick on" burners keep the heat even by adjusting when the probes sense a drop in temperature. This also gives you quick temperature recovery, which can mean faster cook times, greater moisture retention, higher product yield, and better product quality.

These units are available in 24", 36", and 48" widths, all covered by a 1-year parts and labor warranty. Units are shipped for natural gas but can easily be converted to LP (propane) gas with the included kit.

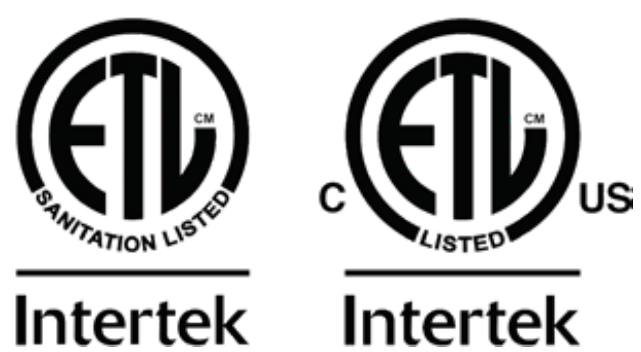
All griddles carry ETL Gas and Sanitation approvals, signifying they have been tested by an independent agency and found to pass U.S. gas and sanitation requirements for use in restaurants.

Not suitable for installation in non-commercial or residential applications.

Warranty

WARRANTY: 1 Year Parts & Labor

Certifications



Product Details

- High-performance & efficient 30,000-BTU, stainless steel, U-style burners provide flame every 6" of griddle surface
- $\frac{3}{4}$ " highly polished griddle plate provides even heat distribution
- Thick, 4"-high backsplash and side splashes fully welded to the griddle
- Double-wall construction with insulated side panels
- Extended cool-to-touch front edge
- Thermostatic griddle available with 200°F to 450°F temperature range
- Wide 3- $\frac{1}{4}$ " front grease through
- Removable, easy to clean stainless steel grease catch pan
- Large temperature knobs with set screws
- Pilots with front access
- Adjustable non-skid stainless steel legs

MOTAK reserves the right to make changes to the design or specifications without prior notice.



MGR36



MGR48



MGR36-T



MGR48-T

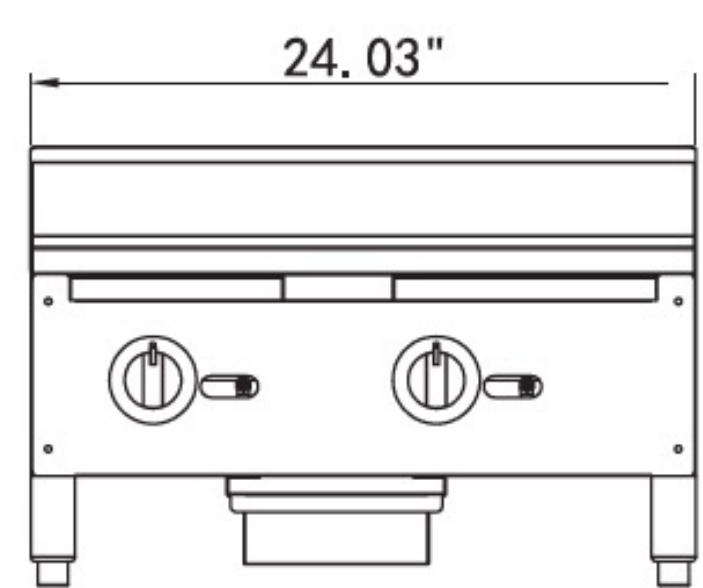
Gas Griddle - Countertop Model

Model #:
MGR 24(-T)
MGR 36(-T)
MGR 48(-T)

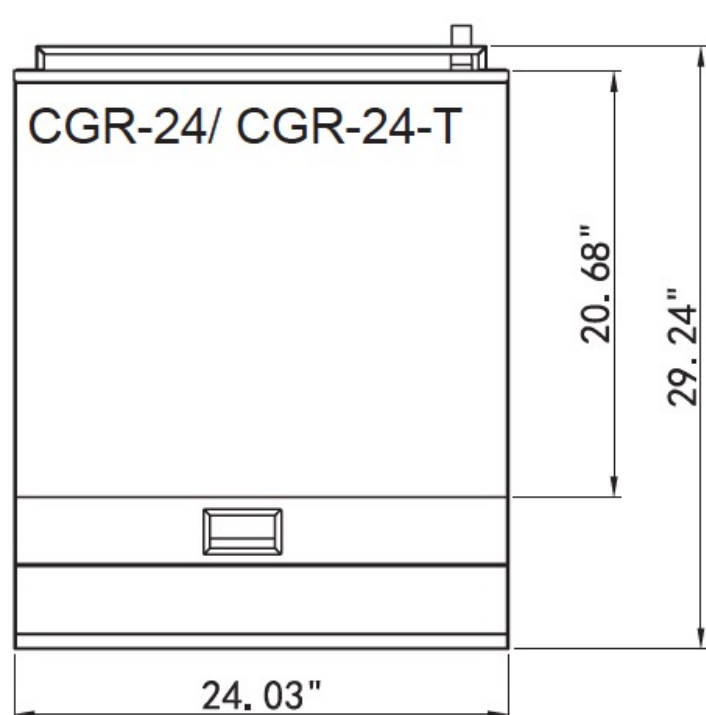
- A pressure regulator is provided with this unit.
 - Natural Gas 4.0" W.C.
 - Propane Gas 10.0" W.C.
- Gas connection is ¾" NPT (19mm) rear gas connection.
- All equipment is supplied ready for natural gas with an LP conversion kit included.

Plan View

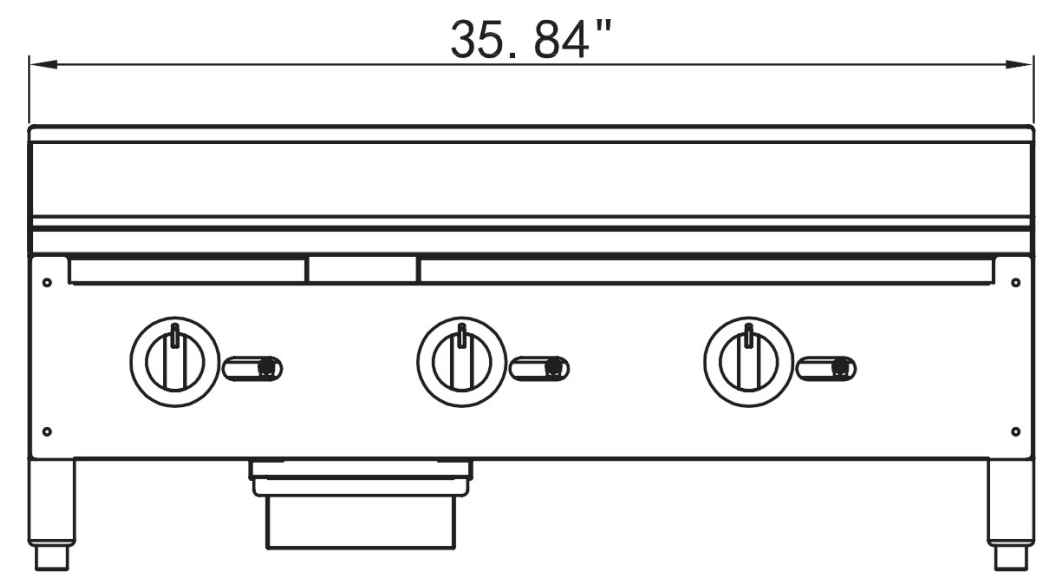
MGR24(-T) - Front View



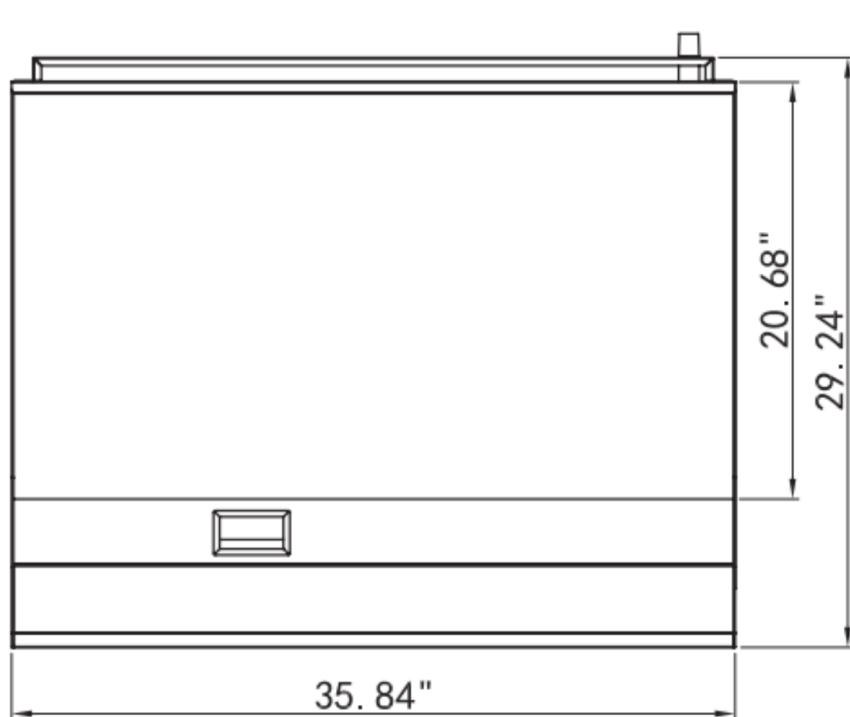
MGR24(-T) - Top View



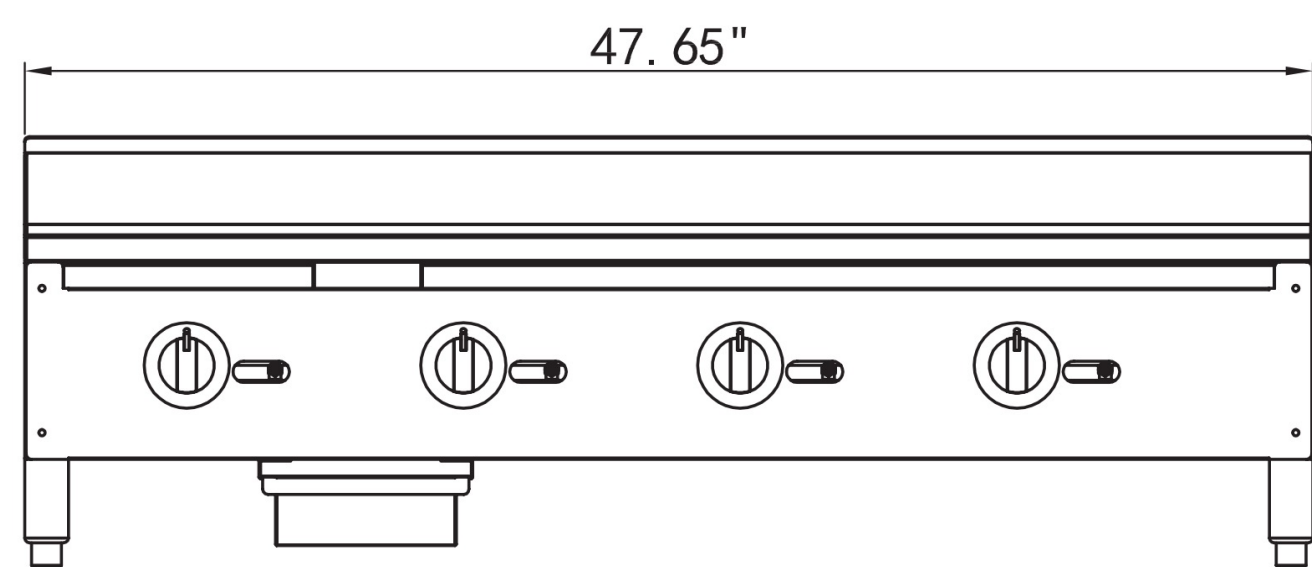
MGR36(-T) - Front View



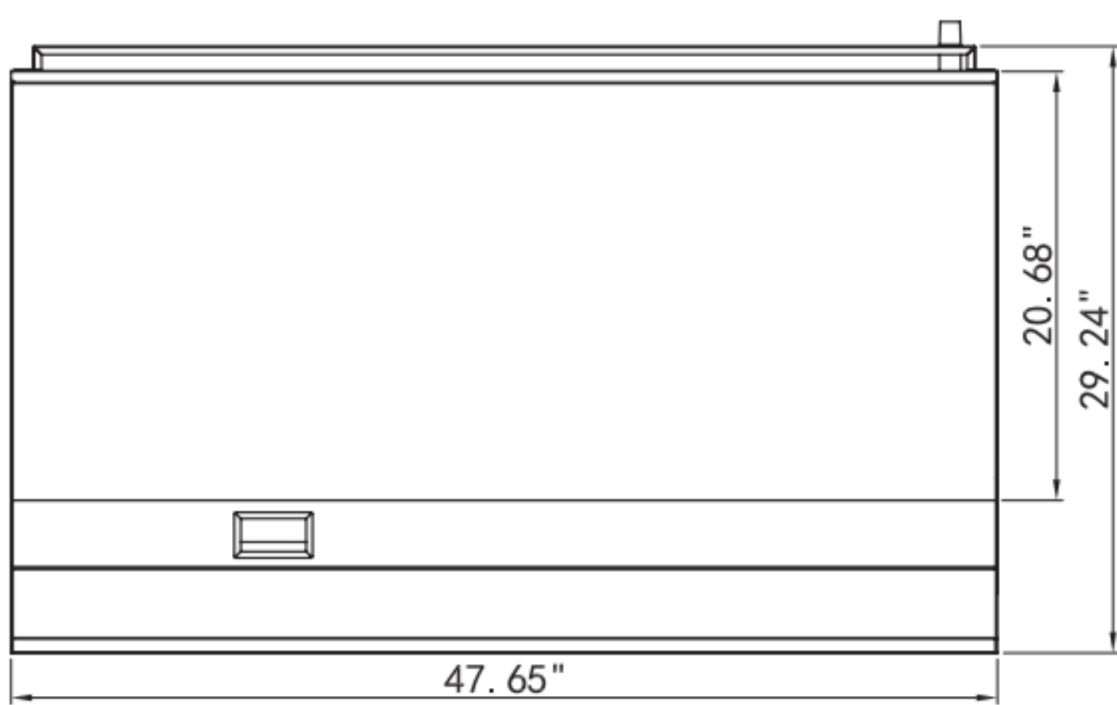
MGR36(-T) - Top View



MGR48(-T) - Front View

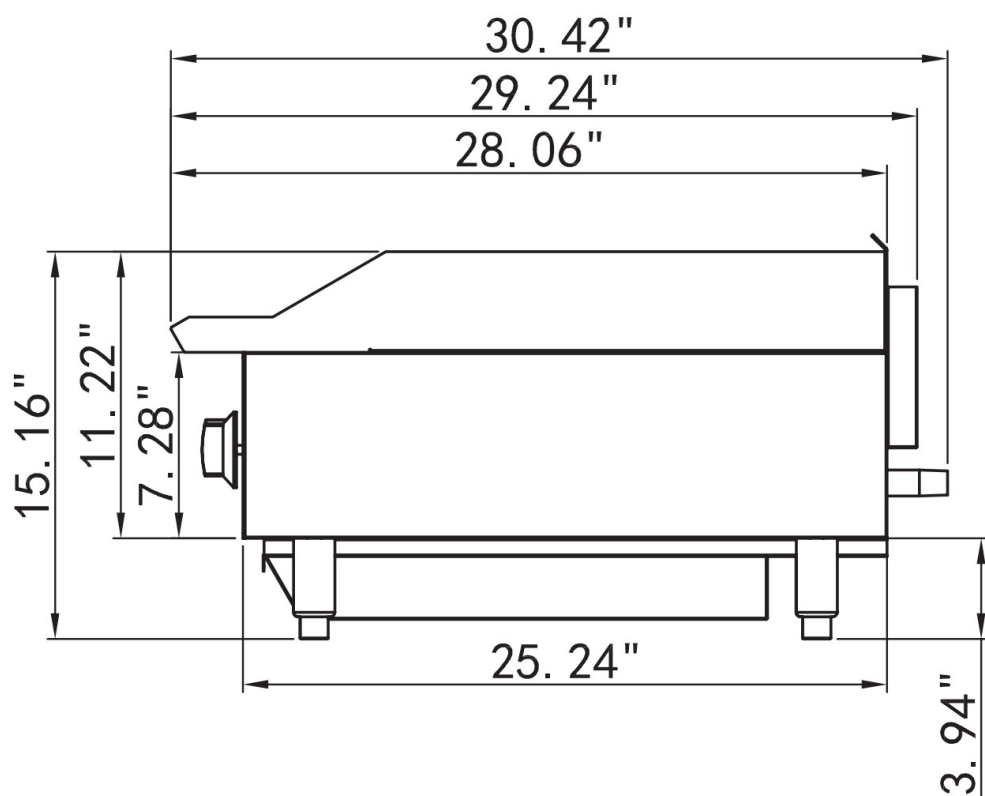


MGR48(-T) - Top View

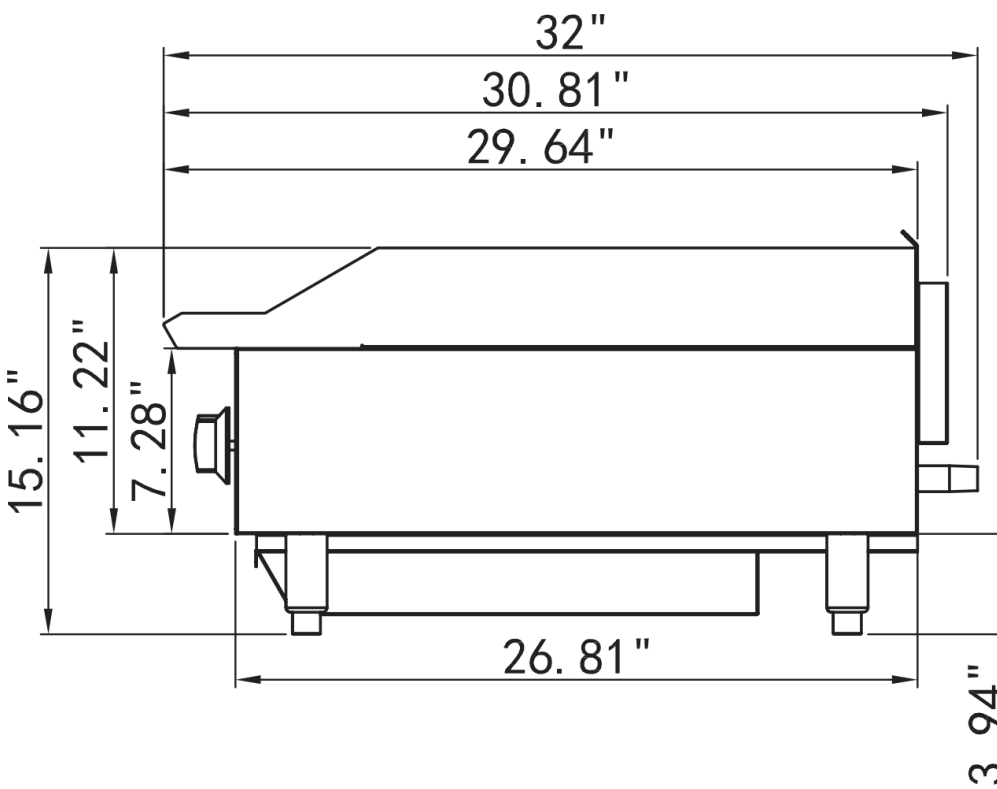


Side Views

Manual Units:



Thermostatic Units:



Specifications

	Model	Burners	Cooking Area		Plate Thickness	Dimensions			BTUs Per Burner	Total BTUs	Crated Weight (lbs)
			Length	Width		Width	Depth	Height			
Manual Units	MGR24	2	20.68"	23.97"	3/4"	24.03"	29.24"	15.16"	30,000	60,000	198 lbs.
	MGR36	3	20.68"	35.78"	3/4"	35.84"	29.24"	15.16"	30,000	90,000	274 lbs.
	MGR48	4	20.68"	47.59"	3/4"	47.65"	29.24"	15.16"	30,000	120,000	352 lbs.
Thermostatic Units	MGR24-T	2	20.68"	23.97"	3/4"	24.03	29.24"	15.16"	30,000	60,000	198 lbs.
	MGR36-T	3	20.68"	35.78"	3/4"	35.84"	29.24"	15.16"	30,000	90,000	274 lbs.
	MGR48-T	4	20.68"	47.59"	3/4"	47.65"	29.24"	15.16"	30,000	120,000	352 lbs.

Not suitable for installation in non-commercial or residential applications.

MOTAK reserves the right to make changes to the design or specifications without prior notice.