

MOTAK

Mobile Ice Cream Freezer

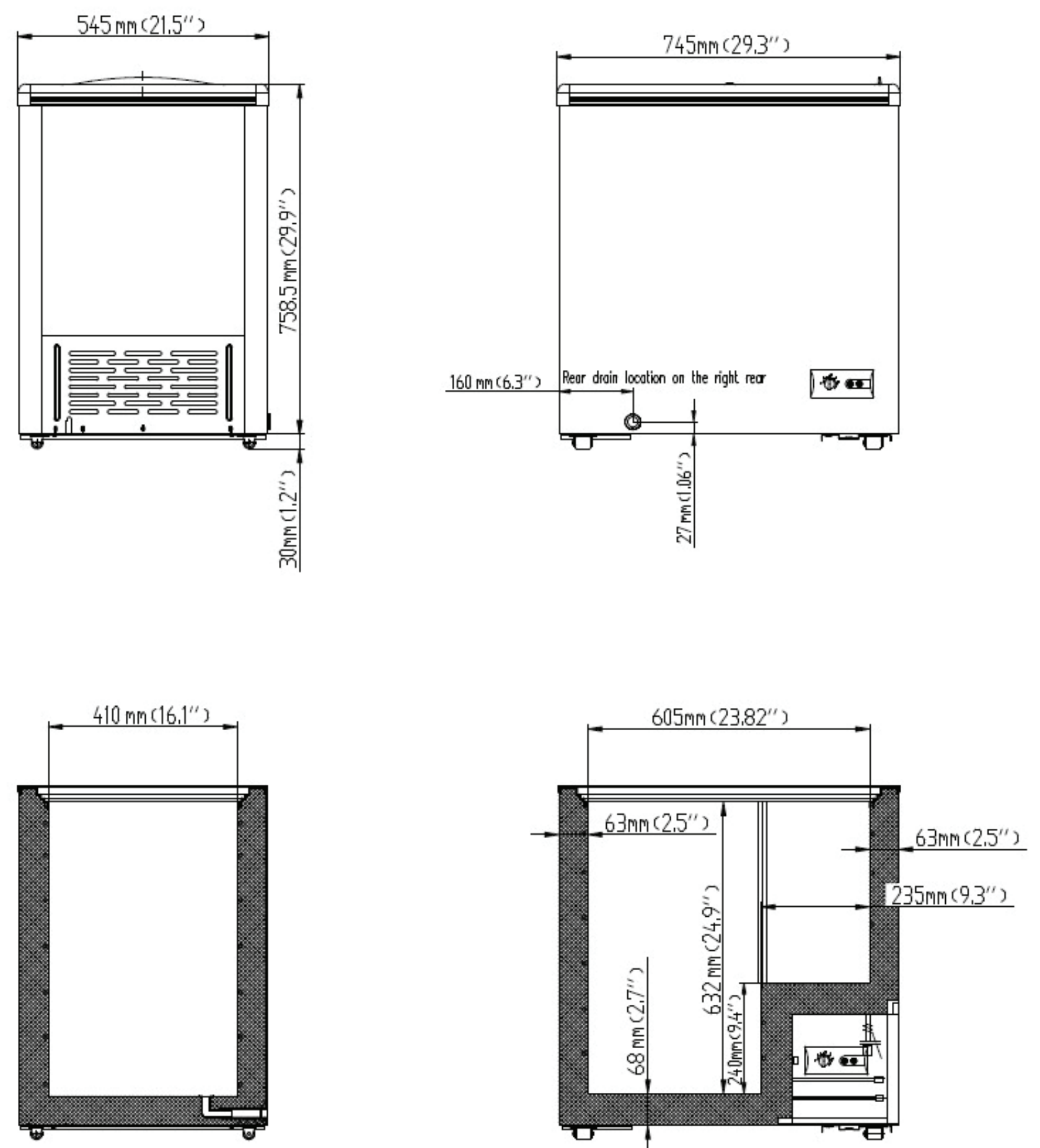
Model #: MSD-142

Product Details

- CFC free refrigerant and 2.5" foam insulation
- Mechanical Thermostat adjust from -15°F to 8°F
- Drainage is in rear
- Fast freeze time
- Flat Sliding Glass Doors-Top LOW-E Tempered Glass for easy view. Locks & Keys included.
- Removable PVC coated baskets included for easy organizing
- Uses R290 refrigerant, which is eco-friendly and more efficient
- Low noise level
- Internal coved corners, easy to clean
- Big casters for easy moving
- Manual Defrost
- Warranty: 1 year parts and labor



Plan View



Not suitable for installation in non-commercial or residential applications.

Certifications



Specifications

Model	# OF DOORS	# OF BASKETS	APPX. STORAGE CAP. (CU/FT)	CABINET DIM (IN)			HP	VOLTAGE/Hz/ph	AMP	NEMA PLUG	CORD LENGTH (FT)	UNCRATED / CRATED WEIGHT
				W	D	H						
MSD-142	2	2	4.2	29.5	21.5	31.1	1/4	115/60/1	2.0	5-15P	6	75/86

MOTAK reserves the right to make changes to the design or specifications without prior notice.