

Submittal Drawings Cover Page


All of Premier Metal & Glass' (PMG) projects are custom manufactured. PMG's customer's (purchasing contractor) signature is required on these drawings in order to release this project into production.

This checklist is intended to provide the contractor a guide to ensure proper fit and finish. PMG will manufacture this custom project based on this set of signed drawings. If CAD files of the counters and layout are available, it is always best for the contractor to provide the files to PMG in order to expedite accuracy of the submittal drawings.

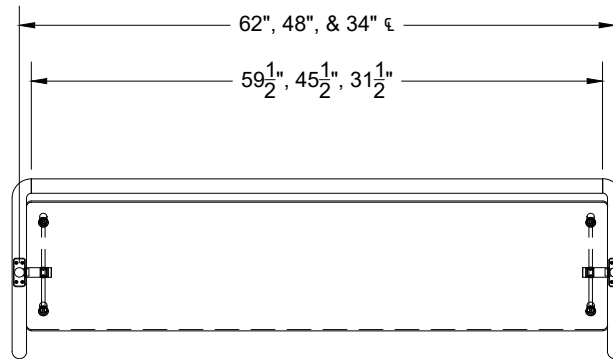
It is imperative that the contractor verify the following:

- All dimensions have been verified for proper fit.
- The mounting hardware depicted in this set of submittal drawings is appropriate for the install site field conditions.
- The finish for the metal hardware and tubing is correct.
- If heat strips and/or light fixtures are present on this project, the components' electrical requirements and wire chase locations have been verified.
- Contractor understands whether project will be shipped knocked down or assembled and the contractor has conveyed to PMG which option will work best for this particular installation.

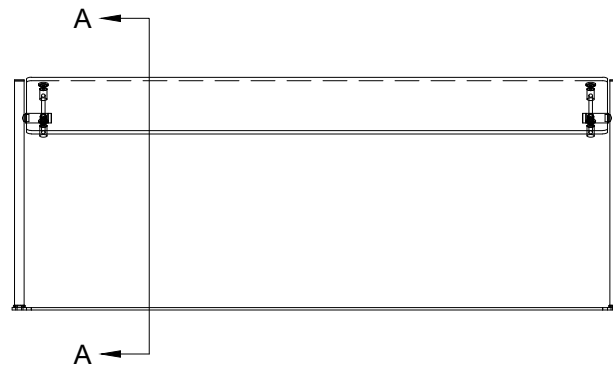
PMG's default design for food shields complies with **NSF/ANSI 2-2014** unless otherwise directed by the contractor. Local codes, which are determined by the local Authority Having Jurisdiction where the food shield is to be installed, will have the final determination of code compliance. It is the contractor's responsibility to ensure compliance to the codes set by the local Authority Having Jurisdiction and PMG assumes contractor has performed due diligence to ensure local code compliance of the food shield.

			
WWW.PMG-INC.COM 800-251-5800 800-251-2515 1835 MacArthur Blvd. N.W. Atlanta, GA 30318 © 2016 PMG Ventures, Inc.			
			
N/A		N/A	
RTS SELF-SERVE PORTABLE 2.0			
PMG			
COVER PAGE			
INFO			
FINISH: BRUSHED STAINLESS			
DATE	6/12/20	TOL:	± 1/16"
SHEET	1 OF 2	DWR	BSO
PROJ# PRMGLASS.29774			
REVISIONS	BY	DATE	The information contained hereon may deviate from the original specification. PMG will fabricate its product to the specifications contained hereon, superseding previous specifications. Obtaining code approval and ensuring inspection compliance are the responsibilities of the purchaser. <input type="checkbox"/> Approved <input type="checkbox"/> Approved As Noted <input type="checkbox"/> Resubmit As Noted
	Purchaser's signature required prior to fabrication. The information contained hereon may deviate from the original specification. PMG will fabricate its product to the specifications contained hereon, superseding previous specifications. Obtaining code approval and ensuring inspection compliance are the responsibilities of the purchaser.		
Purchaser's Signature The content hereon is the intellectual property of PMG Ventures, Inc. It is confidential and not to be disclosed to or used by any party not listed herein.		Date	

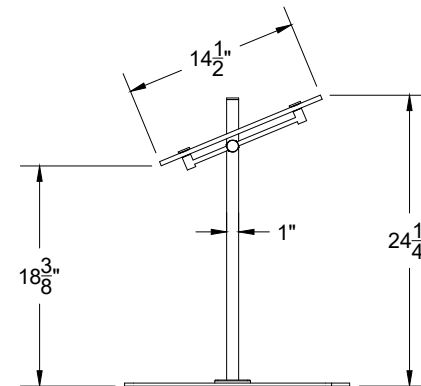
A 3D perspective rendering of a metal frame assembly. The frame consists of two vertical posts and a horizontal base bar. A large, rectangular, light gray panel (likely glass or acrylic) is mounted on top of the vertical posts. The panel is held in place by adjustable clamps on both the left and right sides. Each clamp has a horizontal bar with a central pin and two adjustable knobs. The base bar is L-shaped, with one leg extending horizontally and the other vertically. The entire assembly is shown against a plain white background.



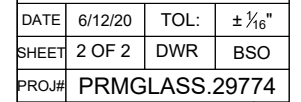
SCALE 1/8" = 1'



SCALE 1/8" = 1'



SECTION A-A
SCALE 3/4" = 1'-0"



REVISIONS	BY	DATE
-	-	-

Purchaser's signature required prior to fabrication. The information contained hereon may deviate from the original specification. PMG will fabricate its product to the specifications contained hereon, superseding previous specifications. Obtaining code approval and ensuring inspection compliance are the responsibilities of the purchaser.



☐ Approved
 ☐ Approved As Noted
 ☐ Resubmit As Noted

Purchaser's Signature _____ Date _____

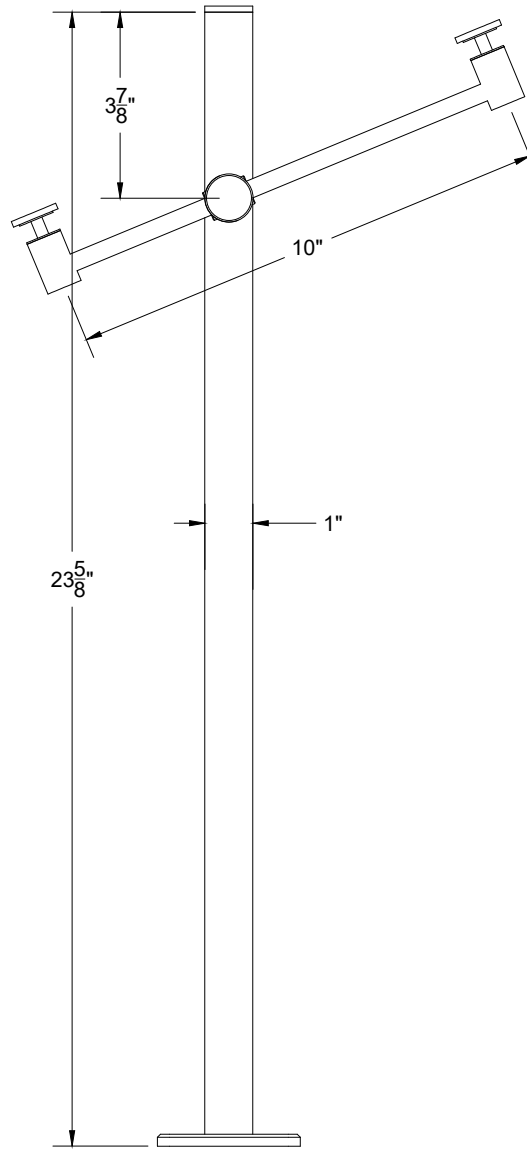
The content hereon is the intellectual property of PMG Ventures, Inc. It is confidential and not to be disclosed to or used by any party not listed herein.

SCREW POST TO BASE USING #2 PHILIPS SCREW DRIVER



<div>PMG PREMIER METAL & GLASS</div> <div>WWW.PMG-INC.COM 800-251-5800 800-251-2515 1835 MacArthur Blvd. N.W. Atlanta, GA 30318</div> <div>© 2016 PMG Ventures, Inc.</div>			
<div></div>		<div><div>C</div><div></div><div>US</div></div>	
N/A		N/A	
PMG			
INFO			
FINISH: BRUSHED STAINLESS			
DATE	6/12/20	TOL:	± 1/16"
SHEET	1 OF 1	DWR	BSO
PROJ#	PRMGLASS.29774		
REVISIONS	BY	DATE	<div><div>Purchaser's signature required prior to fabrication. The information contained hereon may deviate from the original specification. PMG will fabricate its product to the specifications contained hereon, superseding previous specifications. Obtaining code approval and ensuring inspection compliance are the responsibilities of the purchaser.</div><div>Approved <input type="checkbox"/> Approved As Noted <input type="checkbox"/> Resubmit As Noted <input type="checkbox"/></div><div>Purchaser's Signature _____ Date _____</div><div>The content hereon is the intellectual property of PMG Ventures, Inc. It is confidential and not to be disclosed to or used by any party not listed herein.</div></div>

RTS - PORTABLE POSTS PMG PART # RTS-PORTABLE-POST



END POSTS ... 60 REQD.

RTS-PORTABLE-BASE-34,48,62

