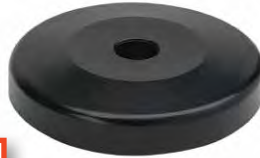




**ADD YOUR CASTER KIT
TO YOUR UNIT FOR
MOBILITY**

**Up to 800-3,200 lb.
MOBILE LOAD CAPACITY**



Donut Bumper

Non-marking, 3" diameter plastic bumper used to protect walls and help cushion impact.

MODEL NO.	DESCRIPTION	SHIP WGT
DB	One 3" Diameter Donut Bumper	1 lb

Casters

MODEL NO.	DESCRIPTION	LOAD CAPACITY PER CASTER	SHIP WGT
Stem Casters			
WR-00H	Four Swivel 5" x 1-1/4" Thermoplastic Resin Casters, 2 with brake	300 lbs	10 lbs
WR-00H-HD	Four Swivel 5-1/2" x 1-1/4" Heavy-Duty Polyurethane Casters, 2 with brake	600 lbs	12 lbs
WR-00HS	Four Swivel 5" x 1-1/4" Thermoplastic Resin Stainless Steel Casters with Zerk Grease Fittings, 2 with brake	300 lbs	12 lbs
WR-00CO	Four Swivel ESD/Conductive 5" x 1-1/4" Casters, 2 with brake	300 lbs	12 lbs
WR-SB2R2*	Two Swivel 5" x 1-1/4" Thermoplastic Resin Caster with brake, 2 Rigid	300 lbs	12 lbs
WR-3	Four Swivel 3" Polyurethane Casters, all with brake	200 lbs	8 lbs
WR-RG*	One Rigid 5" x 1-1/4" Thermoplastic Resin Caster	300 lbs	3 lbs
WR-PS	One Swivel 8" x 2-1/2" Pneumatic Caster	325 lbs	4 lbs
PSC-5S	5"x1-1/4" Polymer Swivel Casters, 2 with brake	200 lbs	9 lbs
Plate Casters			
PT-PS	One Swivel 5" x 1-1/4" Thermoplastic Resin Caster	300 lbs	3 lbs
PT-PR	One Rigid 5" x 1-1/4" Thermoplastic Resin Caster	300 lbs	3 lbs
PT-PSB	One Swivel 5" x 1-1/4" Thermoplastic Resin Caster with brake	300 lbs	3 lbs
PT-PS-S	One Swivel 5" x 1-1/4" Polyurethane Stainless Steel Caster with Zerk Grease Fittings	300 lbs	3 lbs
PT-PR-S	One Rigid 5" x 1-1/4" Polyurethane Stainless Steel Caster with Zerk Grease Fittings	300 lbs	3 lbs
PT-PSB-S	One Swivel 5" x 1-1/4" Polyurethane Stainless Steel Caster with brake with Zerk Grease Fittings	300 lbs	3 lbs
PT-PS6	One Swivel 6" x 2" Polyurethane Caster	800 lbs	5 lbs
PT-PR6	One Rigid 6" x 2" Polyurethane Caster	800 lbs	5 lbs
PT-PSB6	One Swivel 6" x 2" Polyurethane Caster with brake	800 lbs	5 lbs
PT-NS	One Swivel 8" x 2-1/2" Pneumatic Caster	325 lbs	4 lbs
PT-NR	One Rigid 8" x 2-1/2" Pneumatic Caster	325 lbs	4 lbs

*Requires Tie Bars for rigid alignment (See pg. 31)



WR-00H
Thermoplastic Resin Stem Casters
Shown with and without brake
Sold as a set of 4 casters, 2 with brake



WR-00H-HD
Heavy-Duty Polyurethane Stem Casters
Shown with and without brake
Sold as a set of 4 casters, 2 with brake



WR-00CO
Conductive Stem Casters
Shown with and without brake
Sold as a set of 4 casters, 2 with brake



WR-00HS
Stainless Steel Stem Casters
Shown with and without brake
Sold as a set of 4 casters, 2 with brake



PSC-5S
Polymer Stem Casters
Shown with and without brake
Sold as a set of 4 casters, 2 with brake



PT-PR
Rigid Thermoplastic Resin Plate Casters



PT-PS
Thermoplastic Resin Plate Casters
Shown with and without brake



WR-RG
Rigid Thermoplastic Resin Stem Casters
Requires Tie Bar
(See chart pg. 31)



WR-3
3" Polyurethane Stem Casters
Sold as a set of 4 casters, all with brake



PT-PR6
Rigid Polyurethane Plate Casters



PT-PS6
Polyurethane Plate Casters
Shown with and without brake



PT-PSB6



WR-PS
Pneumatic Stem Casters



PT-NR
Rigid Pneumatic Plate Casters



PT-NS
Pneumatic Plate Casters