



manufactured fun

PARAGON

# OWNER'S MANUAL

## FOR PROFESSIONAL SNO CONE MACHINE



### Model Numbers

ARCTIC BLAST 6133310	SIMPLY-A-BLAST 6133300	PORT-A-BLAST 6133510	COOLER 6133410	ICE BLAST 6133520
-------------------------	---------------------------	-------------------------	-------------------	----------------------

See page 5 for 230V model numbers

[www.ParagonConcessions.com](http://www.ParagonConcessions.com)

Paragon International, Inc • 731 W. 18<sup>th</sup> Street • P.O. Box 560 • Nevada, IA 50201 USA

Phone (515) 382-8000 • Toll-free (800) 433-0333 • Fax (515) 382-8001 • Email: [cs@manufacturedfun.com](mailto:cs@manufacturedfun.com)

## Important Owner Information

Record the model number, serial number and voltage in the spaces below (the data plate is located on the operator's side of the machine in the bottom right). Please have this information available when calling Paragon for service assistance.

Model No. \_\_\_\_\_

Serial No. \_\_\_\_\_

Voltage \_\_\_\_\_

Business Hours: 8:00 AM to 4:30 PM Central Standard Time (CST)

Telephone: 515-382-8000; 800-433-0333

Email: [cs@manufacturedfun.com](mailto:cs@manufacturedfun.com)

Fax: 515-382-8001

Additional information can be found by visiting our web site at [www.paragonconcessions.com](http://www.paragonconcessions.com)

## SAFETY PRECAUTIONS

Paragon values your continued safety above all else. Please follow these guidelines when using your equipment to prevent injury and maximize product performance:



No direct contact to equipment by the general public should be allowed when used in food service locations. Only trained personnel should operate this equipment. Carefully read any and all instructions before beginning operation of the equipment.

---



Always wear safety glasses when servicing equipment.

---



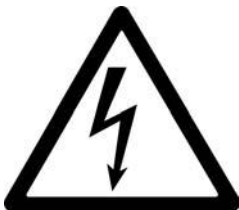
Shaver reaches high speeds during operation. To avoid injury, NEVER place body parts or objects such as ice picks into or near the shaver head assembly while motor is running. *Paragon is not responsible for any injuries that may occur due to failure to follow safety precautions.*

---



Any alterations made to equipment by anyone other than certified Paragon personnel will void warranty and may also create unsafe working conditions. NEVER make alterations to the equipment.

---



Machine must be properly grounded to prevent electrical shock. Do NOT immerse any other part of this equipment in water. Doing so may damage equipment and prevent it from working properly. Always unplug equipment before cleaning or servicing to prevent electric shock.

---

## INTRODUCTION

PARAGON IS PROUD TO BE YOUR  
PARTNER FOR MANUFACTURED FUN.

Our goal is to provide you with the best solutions to attract customers, expand your business, and improve your profits. That's why this product has been specially-crafted to meet precise specifications for performance, efficiency, and output.

### **Your Paragon Sno-Cone Machine features:**

- Sturdy, cast-aluminum components and stainless steel blades that are adjustable and easy to replace.
- Heavy-duty, 1/3 hp motor with 1725 rpm, featuring a convenient manual safety reset to prevent accidental start-up in the case of a jam.
- Slanted drain deck is removable. Made of food grade plastic, engineered to drain moisture away from the ice and extend shelf life. (Slanted drain deck is incorporated into the design of The Cooler)
- Stainless steel and aluminum construction that withstands heavy commercial use and maintains attractive appearance.

Should you have any questions about your equipment, or would like to know more about our other innovative concession equipment and supplies, please contact us at 1-800-433-0333.

*Thank you for your purchase and enjoy!*

## ELECTRICAL REQUIREMENTS

This product requires a properly-grounded 120 volt supply with a 15 amp circuit. The Sno-Storm and The Blizzard have a current draw of 5.7 amps (3 amps for 230 volt units); The Arctic Blast and The Cooler have a current draw of 5.3 amps (2.8 amps for 230 volt units).

We recommend your Paragon Sno-Cone Machine be plugged directly into a dedicated outlet. Extension cords may create a safety hazard and reduce its performance.

Be sure outlet accepts three (3) prong grounded plug. DO NOT use a three (3) prong to two (2) prong adapter.

<b>110 Volt Models NEMA 5-15p</b>					
Arctic Blast	Simply-A-Blast	Cooler	Port-A-Blast	Ice Blast	
6133310	6133300	6133410	6133510	6133520	
<b>230 Volt Models with Plug Type C</b>					
Arctic Blast	Simply-A-Blast	Cooler	Port-A-Blast	Ice Blast	
6233310	623300	6233410	6233510	6233520	
<b>230 Volt Models with Plug Type C</b>					
Arctic Blast	Simply-A-Blast	Cooler	Port-A-Blast	Ice Blast	
62333101	62333001	62334101	62335101	62335201	
<b>230 Volt Models with Plug Type C</b>					
Arctic Blast	Simply-A-Blast	Cooler	Port-A-Blast	Ice Blast	
62333102	62333002	62334102	62335102	62335202	

## UNPACKING

Paragon carefully inspects each product during assembly and after completion to adhere to strict quality guidelines, and packs it securely to ensure safe delivery to each of our customers. Be sure to carefully remove all packing material and adhesive before any operation. Please examine your product to guarantee all equipment has arrived, complete and in good condition.

If you believe that any damage may have occurred during shipment or parts may be missing, please contact Paragon immediately for replacement.

## FREQUENTLY ASKED QUESTIONS

### ***How much will my sno-cone machine produce?***

Your sno-cone machine was engineered to shave 500 lbs. of cube or chunk ice per hour. Based on the ratio that a 1/2 lb. of ice will make a 6 oz. sno-cone, the Paragon Sno-Cone Machine will yield 1000 sno-cones per hour.

### ***How much syrup should I use to flavor my sno-cones?***

One 6 oz sno-cone will take 2 ounces of syrup – cones will not hold more than that.

### ***Can I use block ice to make sno-cones?***

You can use block ice to produce sno-cones if you first break it down into pieces 3-4 inches in size. Ice will not fit the horn if the pieces are too large.

## OPERATING INSTRUCTIONS

Be sure equipment is connected to properly grounded 120 volt power supply with 15 amp circuit. (230 volts for export models)

### Shaving Ice

1. Turn POWER switch ON (Not used on The Cooler and The Arctic Blast).
2. Fill the ice horn with ice.
3. Press and hold the MOTOR switch to activate blades and begin shaving ice.
4. While holding MOTOR switch down, apply steady downward pressure to the ice pusher
5. Release the MOTOR switch when finished.
6. Repeat steps 2-5 for additional batches.

### Cleaning Procedures

1. Remove all ice from the ice horn and storage compartment.
2. Operate the motor for several minutes to remove any water collection on the cutter head.
3. Turn off the POWER switch. (Not used on all models.)
4. Unplug the power cord from the electrical outlet.
5. Using a clean cloth, wipe down the following items.
  - The inner surface of the ice horn (Caution: Sharp Blades)
  - The outside surface of the ice horn casting.
  - The ice pusher.
  - All interior and exterior surfaces.
6. To clean the water collection tray.
  - Tilt tray to drain the water trapped in the drain cavity.
  - Slip the drain hose off the nipple fitting.
  - Lift the tray out of the cabinet
  - Clean tray and area below tray with clean cloth.

**Note: FDA approved cleaners may be used when required for sanitation.**

**BLADES ARE SHARP AND OPERATE AT HIGH SPEEDS!** Please be sure to keep all body parts and any objects such as picks or scoops away from the ice horn while POWER is on!

## **MAINTENANCE OF CUTTING HEAD**

### **Remove the Cutting Head (*Caution: Sharp Blades*)**

1. Turn off the POWER switch. (Not used on all models.)
2. Rotate the cutting head until the set-screw is accessible through the discharge opening located inside the top panel of the storage cabinet.
3. Use a 1/8" hex wrench to loosen the set-screws.
4. Slide the cutting head off the motor shaft and remove the cutting head out of the top side, inlet, of the ice horn.

### **Cutting head blade replacement**

1. Remove the two screws per blade.
2. Lift the old blades out.
3. Position the new blades on the head with the cutting edge extending between 1/32" to 1/16" out from the cutting head surface. This setting will control the granular size of the ice.
4. Use the blade screws to secure the blades to the head.

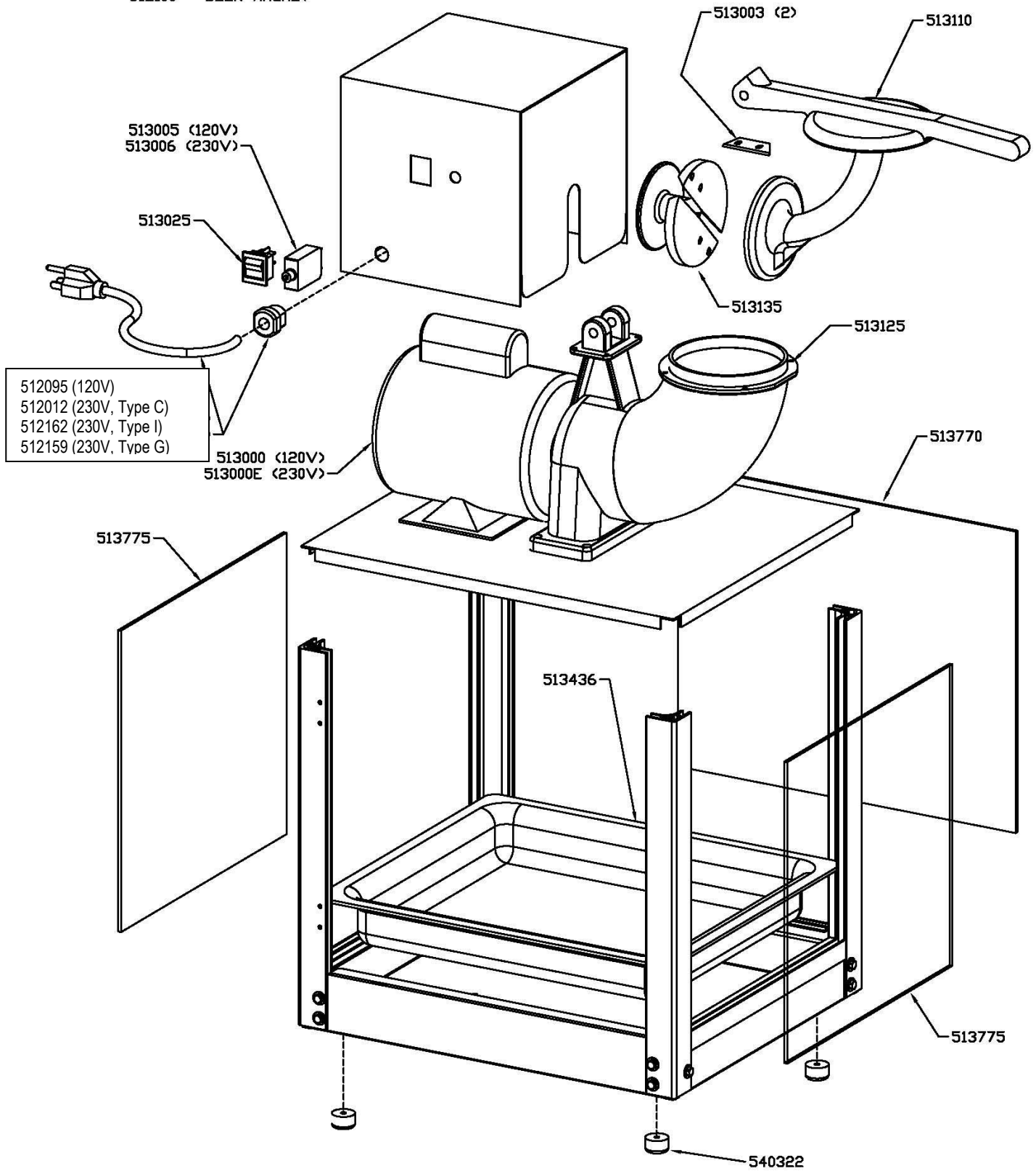
### **Installing the Cutting Head**

1. Slide the cutting head down into the ice horn with the coupler end first.
2. As the cutting head is slipped onto the motor shaft, align the setscrews to the flat location of the motor shaft.
3. Tighten the setscrews with a 1/8" hex wrench.
4. Machine is now ready for use.

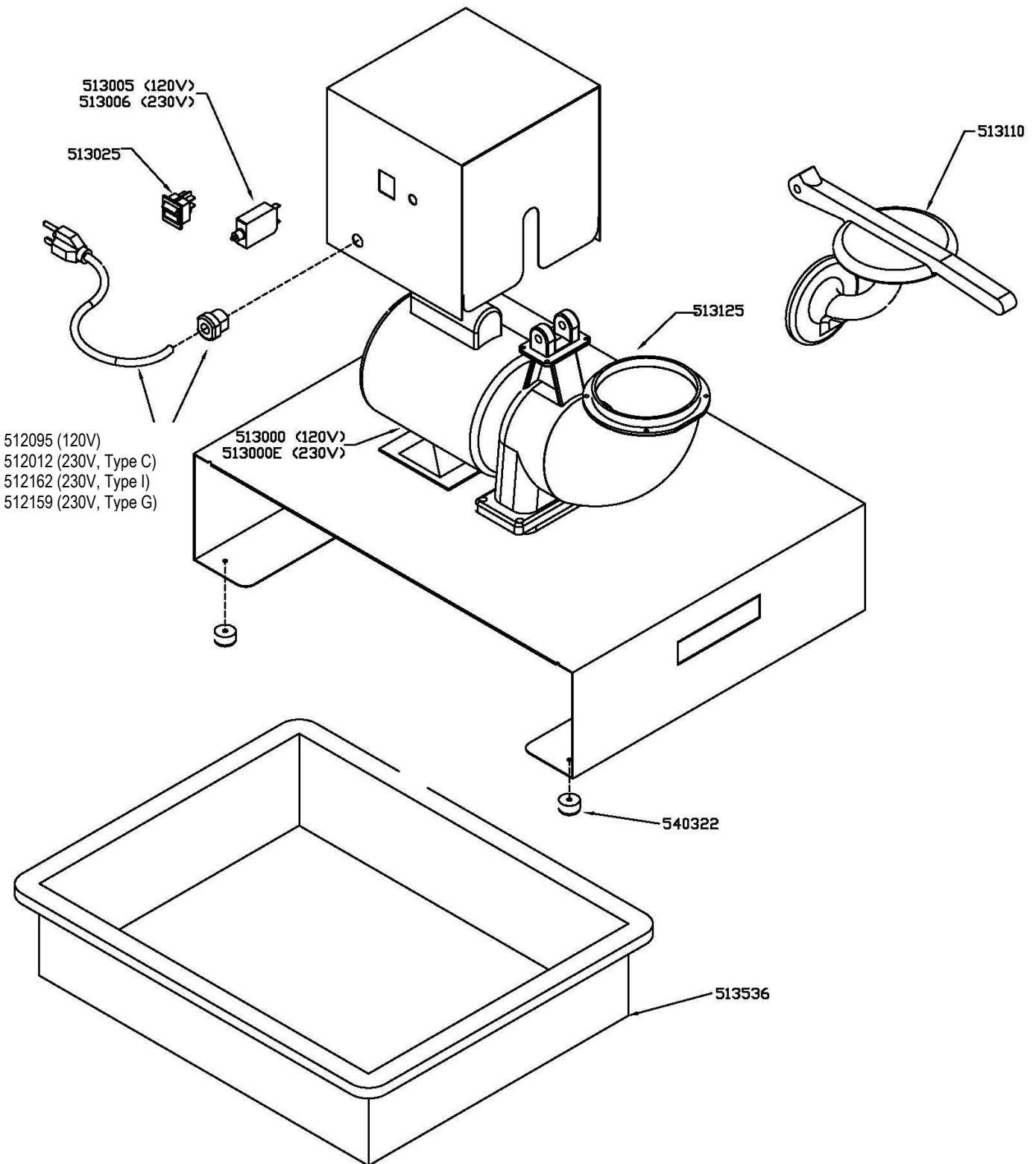


# SIMPLY-A-BLAST ASSEMBLY

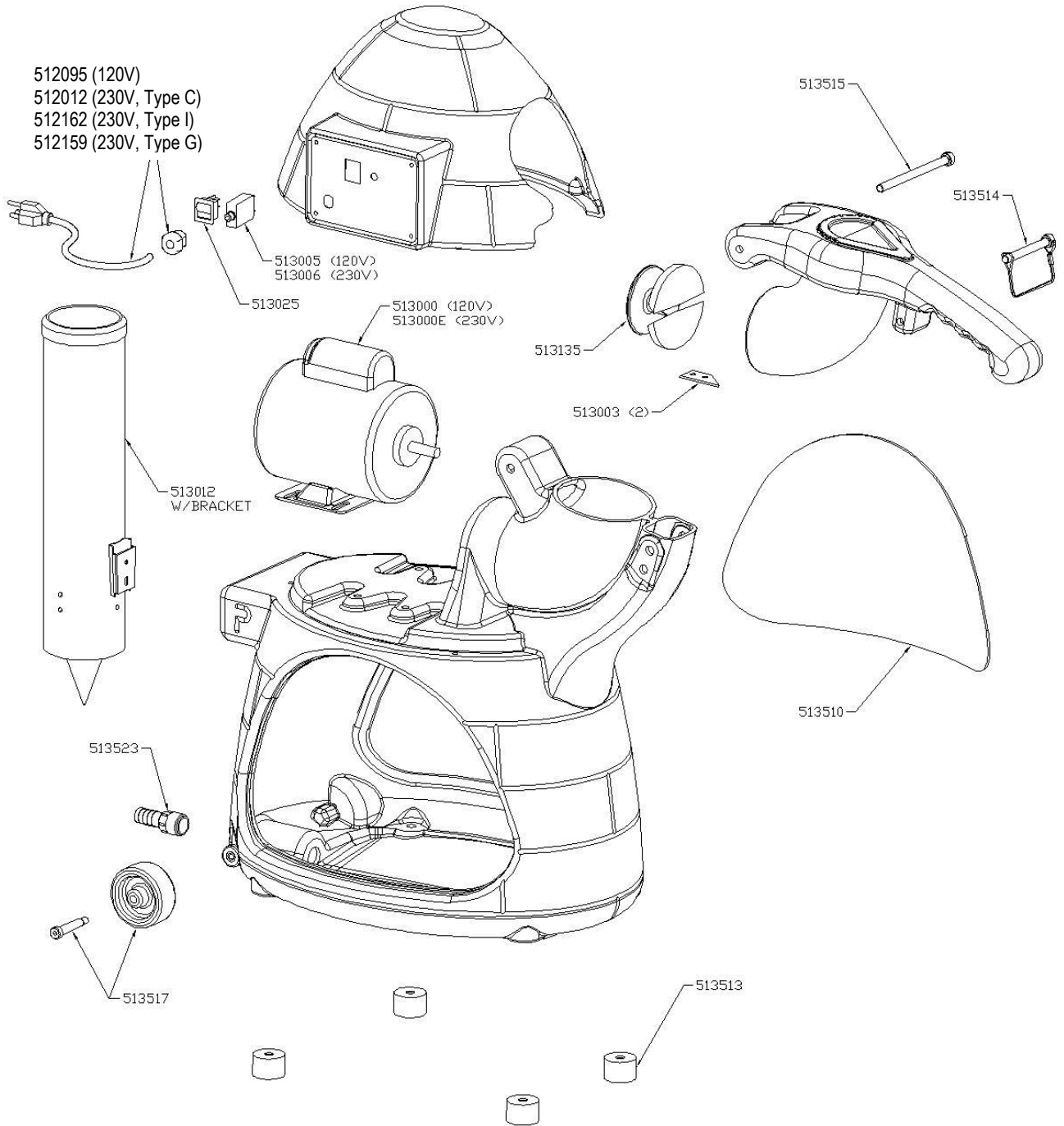
NOT SHOWN  
512100 - DOOR MAGNET



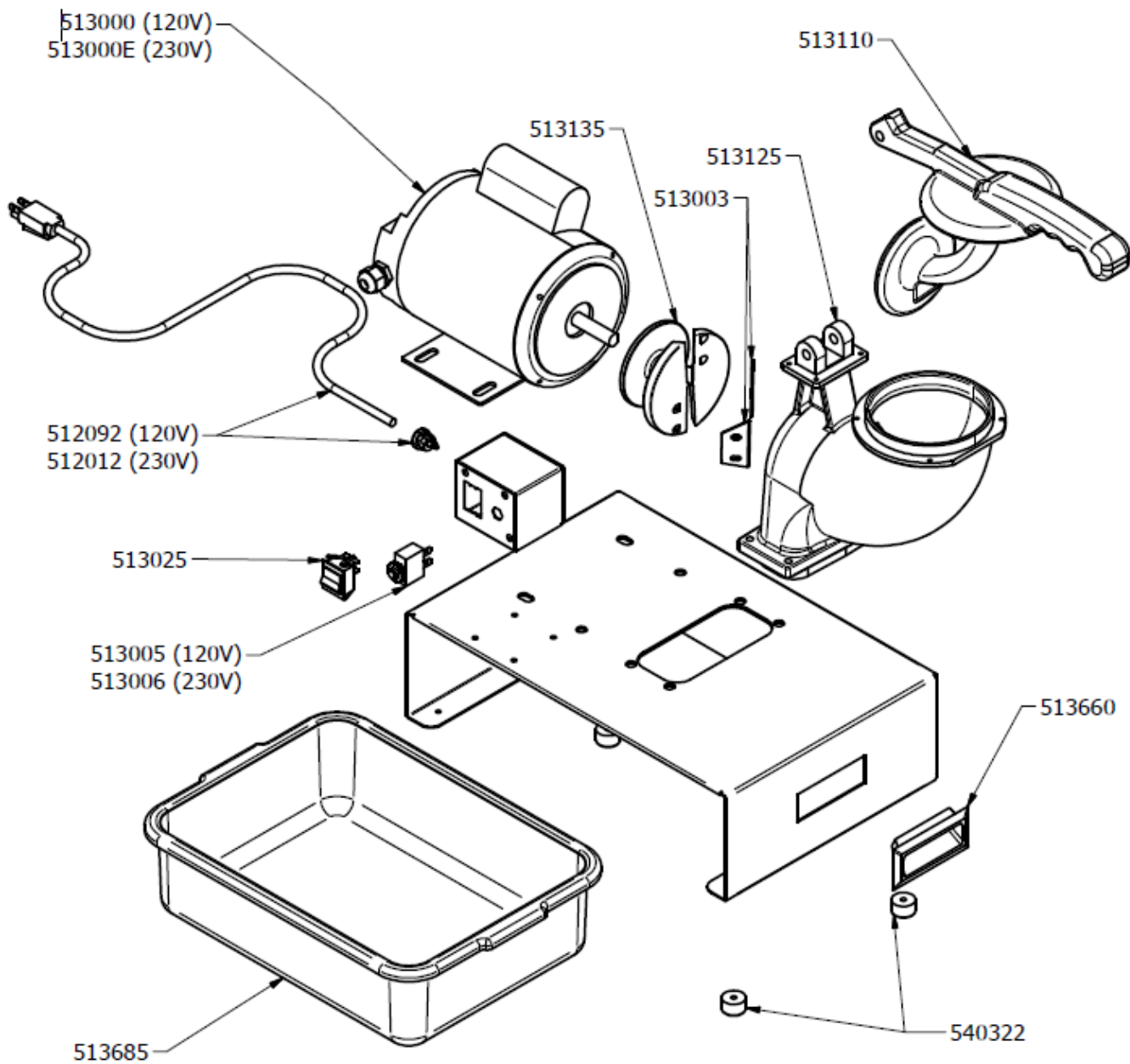
# PORT-A-BLAST ASSEMBLY



# COOLER ASSEMBLY



# ICE BLAST ASSEMBLY



# ARCTIC BLAST/COOLER/SIMPLY-A-BLAST/PORT-A-BLAST WIRING DIAGRAM

