

Glass Door Merchandisers

BOTTOM MOUNTED CONDENSING UNIT (EM SERIES)

Refrigerators / Freezers



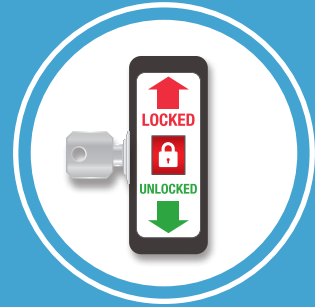
The Glass Merchandiser series boosts impulse sales in the most efficient way thanks to double-pane, UV-reflective, low-emissivity glass sliding or swing doors and vivid, low-heat LED lighting.



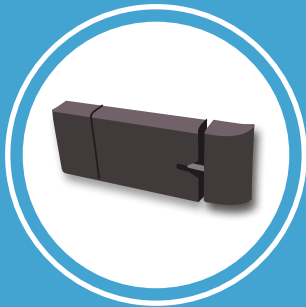
Double Pane Glass Door
Low emissivity & UV-reflective for efficient cooling.



Energy Efficient LED
Shielded LED bar. High lumen, low heat.



Manual Door Lock
Standard and pre-installed for all sliding door models.



Health Timer Lock
Optional and pre-installed for most swing door models.



Detachable Drain Plug
Interior drain plug removes for easy cleaning.



Blizzard R290
EPA/DOE approved, all-in-one, slide-out cooling cartridge.



Digital Control
Easy settings with audio and visual overheat alarm.



ECM Fan Motors
Electronically commutated motors require less energy.



Other Features
2.5" thick insulation, self-closing door, optional casters.

Glass Door Merchandiser Refrigerators – EM Series

Sliding Doors



EMGR33



EMGR33B



EMGR48



EMGR48B



EMGR69



EMGR69B

Cabinet Construction

- Heavy duty white coated steel interior / exterior. Black exterior standard for models EMGR33B, EMGR48B and EMGR69B.
- Open spaced interior with no walls between compartments.
- Stainless steel floor interior has rounded corners and detachable drain plug for ease of cleaning.
- 2.5" thick high density polyurethane insulation.
- Four height adjustable screw legs (six legs for models EMGR69 and EMGR69B).

Refrigeration System

- Bottom mounted, self-contained and fully detachable Blizzard R290 condensing unit uses environmentally friendly, EPA-compliant R290 refrigerant with zero (0) Ozone Depletion Potential (ODP) and three (3) Global Warming Potential (GWP). Blizzard R290 is easily replaceable and requires no on-site brazing.
- Electronically commutated (ECM) fan motors achieve rapid cooling with less energy consumption.
- Full-length air duct ensures optimal cold air distribution.
- Air circulation guard keeps floor vents from obstruction.
- Time-initiated and temperature-terminated auto defrost cycle for seamless operation.
- Large capacity, corrosion-resistant condenser and evaporator coils.
- Self-maintaining, energy-efficient condensate drain pan requires no external drains or electric heaters.
- High performance, auto-reverse condenser fan motor supports compressor ventilation and condenser coil cleaning.
- Pre-wired and ready to plug, 115V/60Hz/1Ph, NEMA 5-15P.

Lighting

- Shielded LED bar lighting with on/off switch provides bright, high color illumination at lower heat output.

Doors

- Low emissivity double glass panes reflect UV rays for efficient cooling.
- Black PVC frames.
- Self-closing with heavy duty door bumpers for impact absorption.
- Removable doors and door tracks for ease of cleaning.
- Pre-installed locks keep your items safe from theft.

Shelving

- Four epoxy coated, steel wire shelves with airflow guard per section.
- Height adjustable stainless steel clips.

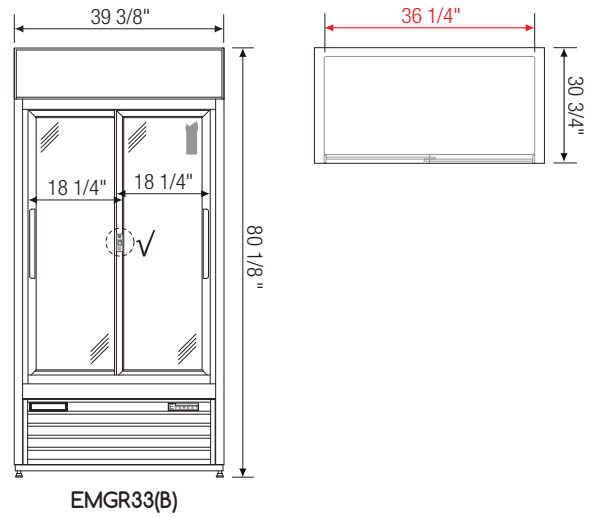
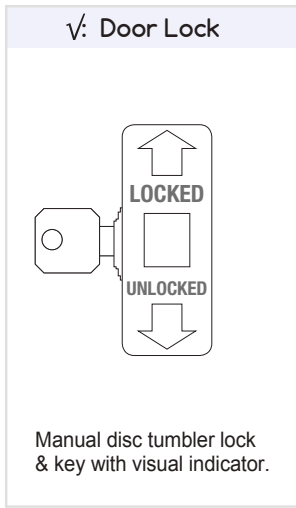
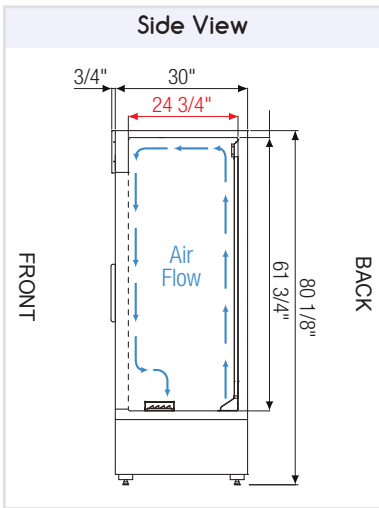
Temperature Control


- Multi-function digital controller with easy to read LED display.
- Factory preset temperature, 35°F. Temp-set range from 33°F to 54°F.
- Audible overheat protection alarm for compressor and condenser coil.

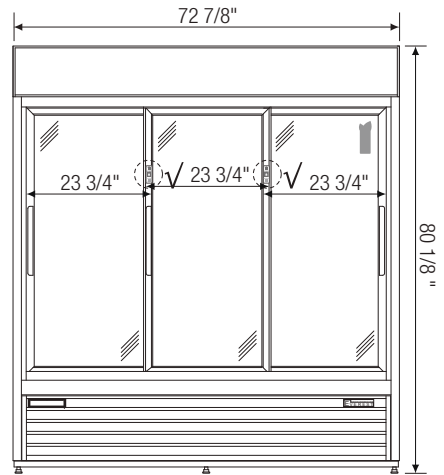
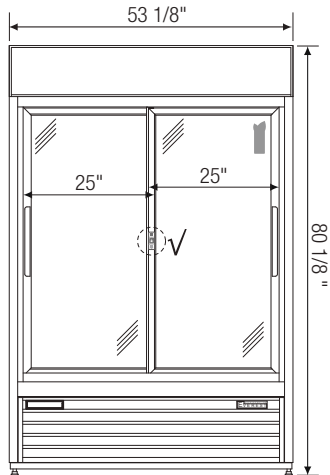
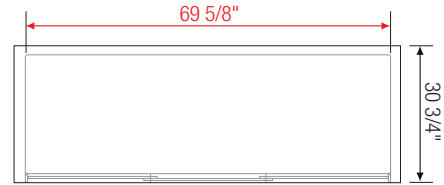
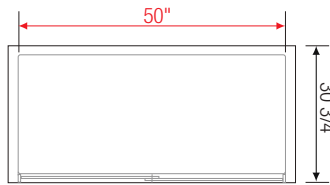
Options

- Additional shelving.
- 5" or 3" swivel casters with locks on front set.
- 3.5" – 6" height-adjustable and interchangeable legs..

↔ = Interior Dimensions ↔ = Exterior Dimensions



 Equipped with 9 ft long NEMA 5-15P plug.



Model	Ref/ Frz/ Dual	# of Doors	Capacity (Cu. Ft.)	Capacity 20 oz. Bottles	HP	Refrigerant	# of Shelves	Power (V-Hz-Ph)	Amps	Crated Weight (LBS)	Exterior Dimensions (Inches)		
											L	D	H
EMGR33(B)	Ref	2 (sliding)	33	336	1/3	R290	8	115-60-1	2.5	416	39 3/8	30 3/4	80 1/8
EMGR48(B)	Ref	2 (sliding)	48	448	1/2	R290	8	115-60-1	6	533	53 1/8	30 3/4	80 1/8
EMGR69(B)	Ref	3 (sliding)	69	672	3/4	R290	12	115-60-1	7	684	72 7/8	30 3/4	80 1/8

Specifications subject to change without notice.

Ref = Refrigerator

Product dimensions are for general purposes and not absolute value. Product capacity (↑) is calculated based on standard industry figures. Slight variations may exist. If dimensions and capacity are critical, please contact Everest Refrigeration.