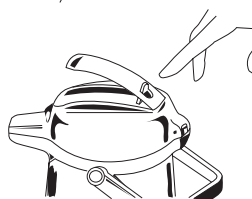
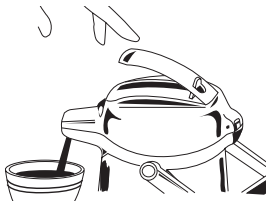
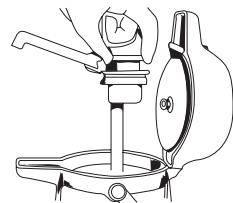
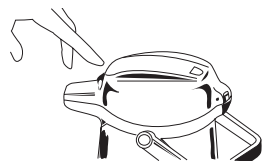




# Airpot

## CARE & HANDLING RECOMMENDATIONS

### How To Use



1. To open lid, push lock release button.

2. Remove suction pipe without hitting inside walls. Before filling the pot with hot liquid, it is advisable to pre-warm the inside with a small amount of hot water. Fill with liquid.\*

3. Lift lid lever upwards from base lid until tab locks into place. Press the top plate to release contents.

4. After serving, gently lift the lever upwards, then press tab while lowering lever to original closed position.

\* For direct brewing, remove lid by pushing lock release and place pot under compatible brewing equipment with suction pipe in place.

### GENERAL CLEANING

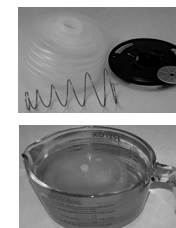
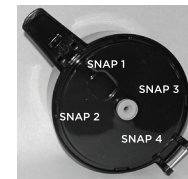
1. Rinse Airpot with hot water thoroughly several times including pumping out the hot water through the nozzle at least 12 full strokes using the pump or lever style lid. Clean the interior with dish detergent and a soft sponge or cloth taking care not to scratch the glass or stainless liner. Rinse with hot water again. Do not submerge the airpot in water at any time.
2. Add 1 tablespoon of bleach in 1 gallon of water, mix and fill airpot with the bleach solution or a commercially prepared cleaner such as JavaClean3 (Part # 12632).
3. Dispense the bleach solution by pumping through the nozzle at least 12 full strokes of the pump or lever.
4. Rinse out the bleach solution with hot water several times, again including pumping out through the nozzle until the bleach solution has been completely removed.

### SUCTION PIPE AND DISCHARGE SPOUT CLEANING



1. Remove the suction pipe assembly.
2. Remove the discharge spout from the suction pipe assembly.
3. Use a small brush as needed to clean the internal surfaces of the discharge spout and suction pipe.

### BELLOWS CLEANING



1. Remove the lid.
2. Apply pressure to the back of the lid to release the bottom plate.
3. Downward pressure on the lid release button can assist in removing the bottom plate.
4. Remove the bottom plate.
5. Remove and disassemble the bellows.
6. Place the bellows in a suitable container and add a disinfecting cleaning solution to fill the bellows.
7. Allow the bellows to soak in the cleaning solution for ten minutes. After two minutes, gently squeeze the bellows and agitate the bellows in the cleaning solution. Repeat every two minutes.
8. Remove the bellows from the cleaning solution. The interior surface of the bellows is accessible through the large hole in one end of the bellows.
9. Rinse the bellows in clean hot water to remove traces of cleaning solution.
10. If residue remains, insert a household disinfectant wipe into the large bellow's hole and hand wipe the surface. Rinse and repeat as required.

## Precautions

1. Do not overfill. If filled to the brim, pot will overflow when pipe is replaced. For glass lined units, do not look directly into the airpot when filling. Keep the unit at arms length.
2. For glass liner models, the glass flask can shatter from mishandling such as sudden, forceful contact with the lower end of the flow pipe. If a glass lined unit is dropped, the liner may break. Under no circumstances should the contents be consumed as they may contain glass fragments.
3. Do not use a scrub brush, polishing powder, etc., to clean the inside as these can damage the glass or stainless surface. Clean only with a soft sponge. Do not immerse in water. Store with lid off.
4. Place the pot beyond reach of children, especially if it is filled with a hot liquid.
5. Direct heat from stoves, heaters, fireplaces or campfires may damage the pot.
6. Do not use chemicals, alcohol, dairy products, ice, solid foods, sticky products or tea leaves.
7. For glass lined pots, do not stir contents with pipe.
8. Carry by the handle and use this airpot in an upright position. Avoid tilting, tipping or dropping. This product is designed for table top use only. It should not be transported and may leak if placed on its side.

# Features

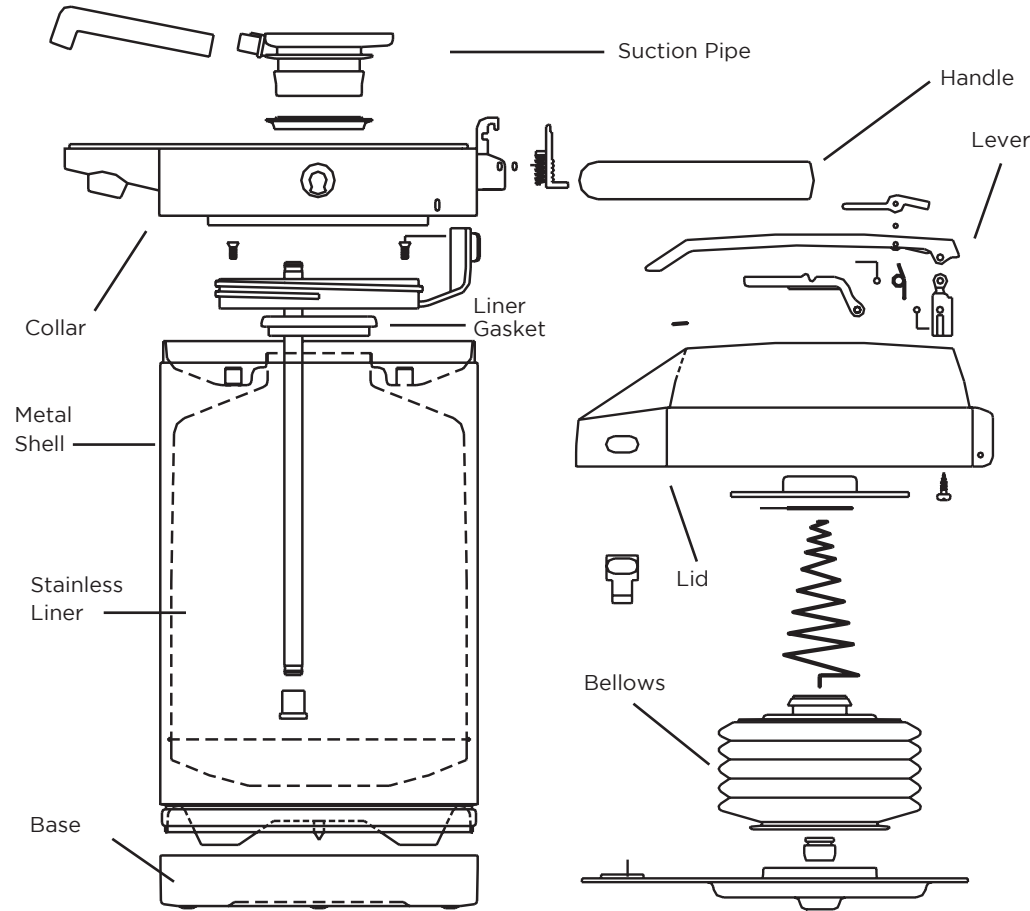
- Lever lid, makes serving quick and easy.
- Replacement parts available.
- Keeps liquids hot or cold 4-6 hours with stainless vacuum.
- Strong lever is durable enough for commercial usage.
- Direct brewing capability.
- NSF Certification

# If Contents Fail To Flow

## CHECK THE FOLLOWING:

- Is there enough liquid in the airpot?
- Is the liner securely in place?
- Is the flow pipe properly inserted?
- Is the lid tight?
- Are you applying enough pressure on the lever?
- Is residue blocking the flow pipe?
- Is the center of the rotating bottom loose? If so, air leakage may decrease the necessary air pressure.

# Parts List



## 3 STEP TROUBLE SHOOTING

1. Tighten the center plug, located in the center of the bottom base, to secure the liner and gasket against the collar of the airpot.
2. When airpot is empty, push the lever of the lid and check for the airflow against the palm of your hand.
3. Inspect suction pipe for cracks.

## PARTS

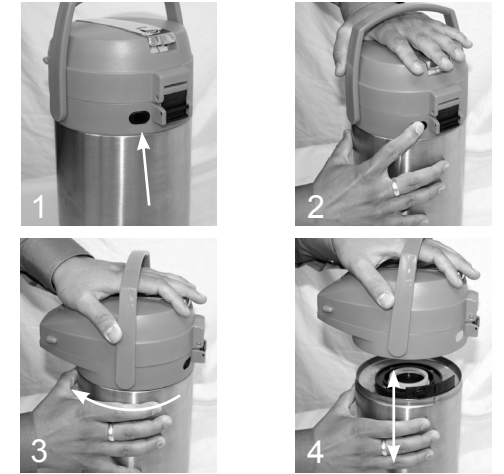
- LID (BELLOWS, LEVER, HANDLE)
- COLLAR (SPOUT)
- SUCTION PIPE
- LINER GASKET
- METAL SHELL
- STAINLESS LINER
- BASE

If your airpot does not work after checking for these problems, call Customer Service at 800-328-4493.

## PARTS AVAILABLE:

- Lids (lever, includes collar)
- Gaskets (lid, liner, suction pipe collar, suction pipe tip)
- Suction Pipe

SERVICE IDEAS, INC.  
2354 VENTURA DRIVE - WOODBURY, MN 55125  
800-328-4493 - WWW.SERVICEIDEAS.COM



## ENAL AIRPOT LID/COLLAR SWITCH

1. Locate the screw near the back of the airpot. Unscrew completely from lid. Set aside.
2. Locate the black button near the back of the airpot.
3. Place your hand under the handle (like shown) and use your other hand to push the black button in.
4. Secure the airpot with one hand while you use the hand holding the lid to turn the lid counter clockwise (like shown).
5. Lift the lid and collar from the base of the airpot. **Be sure that the rubber gasket (noted in photo 4) remains on the base of the airpot before you switch lids.**
6. To replace lid/collar, line up the handle on the new lid with the button on the base of the airpot (as shown in photo 4).
7. Press down and turn lid counterclockwise until you hear a "click" as the button secures onto the lid/collar.