



# X-Series 60" Gas Restaurant Range

Project \_\_\_\_\_  
 Item \_\_\_\_\_  
 Quantity \_\_\_\_\_  
 CSI Section 11400  
 Approved \_\_\_\_\_  
 Date \_\_\_\_\_

## Models

- X60-10RR
- X60-6G24RR



Model X60-10RR

## Standard Features

- Large 27" (686mm) work top surface
- Stainless steel front and sides
- Stainless steel 4" (102mm) plate rail
- Stainless steel backguard w/ removable stainless steel shelf
- 12" (305mm) section stamped drip trays w/ dimpled bottom
- Durable easy to read control knobs
- Easy to clean 6" (152mm) steel core, injection molded legs
- Pressure regulator, 1" NPT
- Ergonomic split cast-iron top ring grates
- 30,000 BTU/8.79 kW 2-piece cast-iron "Q" style donut open burner
- 18,000 BTU/5.27 kW cast-iron "H" style griddle burner per 12"(305mm) width of griddle
- Griddle plates only available on right side of range
- 5/8" (15mm) thick steel griddle plate w/ manual hi/lo valve control
- 4-1/4" (108mm) wide grease trough
- Straight steel tube oven burner 33,000 BTU/7.33 kW
- Easy to access oven pilot
- Reinforced chassis
- Standard size oven with ribbed porcelain oven bottom and door interior, aluminized top, sides and back
- Oven thermostat w/ Low to 500° F

(260° C)

- Nickel-plated oven rack with two fixed-position oven rack guides
- Square door design with strong, "keep-cool" oven door handle

## Options & Accessories

- Low-profile 9-3/8" (238mm) backguard stainless steel front and sides
- Four 6" (152mm) levelling swivel casters w/front locking
- Celsius temperature dials

## Specifications

Gas restaurant series range with standard oven.

23-5/8" (600mm) wide with a 27" (686mm) deep work top surface.

Stainless steel front, sides and 4"(102mm) wide front rail.

6" (152mm) legs with adjustable feet.

Ten robust 2-piece 30,000 BTU/8.797 kW (Natural gas), cast-iron open burners set in split cast-iron ergonomic grates.

Griddle on applicable models with cast-iron "H" style burners, 18,000 BTU/5.27 kW (natural gas), in lieu of open burners.

Porcelain oven bottom and door liner.

Two fixed-position rack guides w/one oven rack.

Heavy-duty oven door with "keep-cool" door handle.

Straight steel tube oven burner 33,000 BTU/7.33 kW (natural gas) provides quality bake and good recovery.

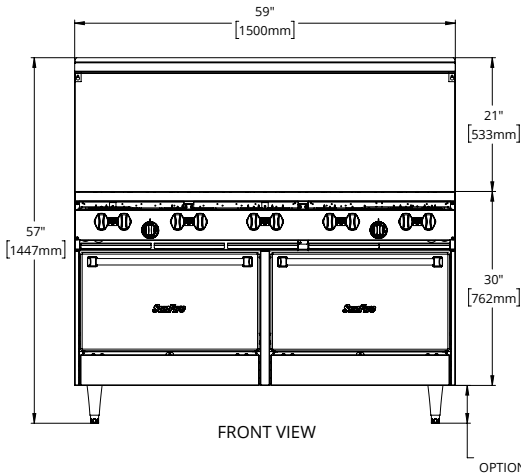
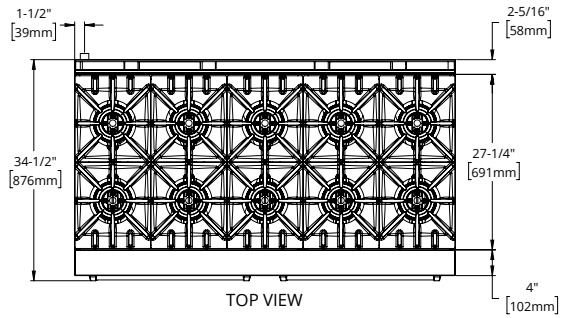
Oven thermostat ranges from Low to 500° F (260° C).

NOTE: Use only Garland certified casters and approved restraining devices.



X-Series 60" Gas Restaurant Range

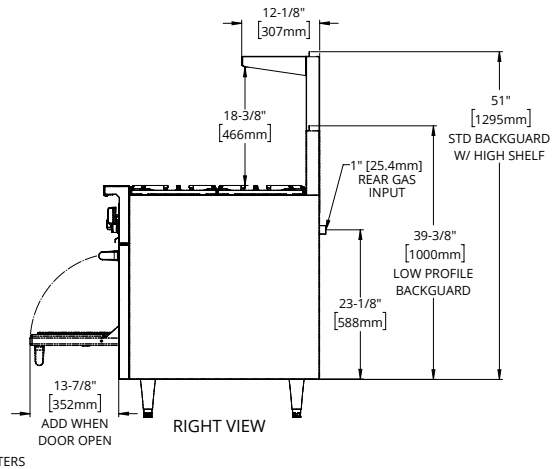
## X-Series 60" Gas Restaurant Range



Gas input ratings shown for installations up to 2000 ft., (610m) above sea level. Please specify altitudes over 2000 ft.

This product is not approved for residential use.

Note: Installation clearance reductions are applicable only where local codes permit.



Model Number	Description	Total BTU/Hr Natural Gas	Total BTU/Hr Propane	Shipping Information		
				Lbs.	Kg	Cu Ft
X60-10RR	Ten Open Top Burners w/ Two Standard Ovens	366,000	318,000	726	329	79
X60-6G24RR	24" Griddle, 6 Open Top Burners w/ Two Standard Ovens	282,000	250,000	791	359	79

Width In (mm)	Depth In (mm)	Height w/shelf In (mm)	Oven Interior-in (mm)			Combustible Wall Clearance-In (mm)		Entry Clearances In (mm)		Manifold Operating Pressure	
			Height	Depth	Width	Sides	Rear	Crated	Uncrated	Natural	Propane
59-1/16 (1500)	33-1/2 (851)	57 (1448)	13 (330)	22 (559)	26-1/4 (667)	14 (356)	6 (152)	37 (940)	36-1/2 (927)	4.5" WC 11 mbar	10" 25 mbar

Burner Ratings (BTU/Hr/kW)			
Gas Type	Open Top	Griddle	Standard Oven
Natural	30,000/8.79	18,000/5.27	33,000/9.67
Propane	26,000/6.1	18,000/5.27	29,000/8.50

Garland/SunFire reserves the right to make changes to the design or specifications without prior notice.