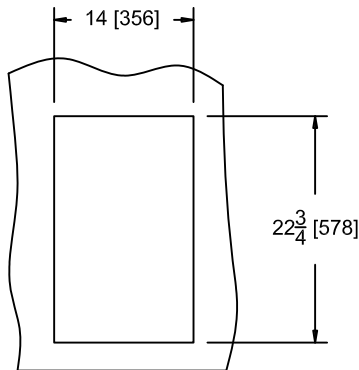


INSTALLATION INSTRUCTIONS BUILT-IN FRYERS MODEL F-556

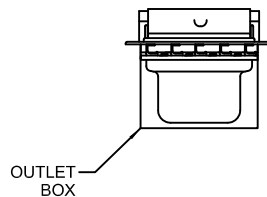
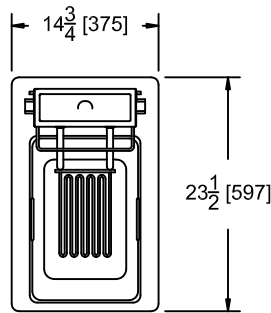
ELECTRICAL

MODEL	VOLTS	WATTS	AMPS PER LINE 3 PHASE			AMPS SINGLE PHASE	FIELD WIRING GAUGE		TEMP. RATING
			L1	L2	L3		3 PHASE	1 PHASE	
F-556	208	5750	-	-	-	27.6	-	8 AWG Cu	75°C
F-556	240	5750	-	-	-	24.0	-	8 AWG Cu	75°C

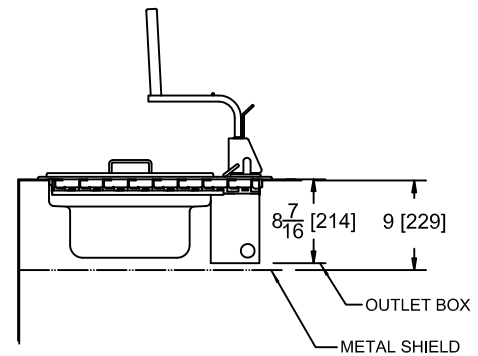
CUTOUT DETAILS



TOP CUTOUT



OUTLET
BOX

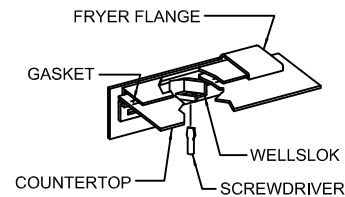


OUTLET BOX

METAL SHIELD

CLEARANCES

SUGGESTED CLEARANCE UNIT TO THE NEAREST SURFACE*			
BACK	SIDE	BOTTOM	FRONT
2 1/4 57	3 76	6 152	3 76



DETAIL 'A'

INSTALLATION INSTRUCTIONS

UNIT MUST BE INSTALLED IN AN ALL METAL COUNTER

THE INSTALLATION OF RECOGNIZED COMPONENT UNITS REQUIRES ADDITIONAL EVALUATIONS TO UNDERWRITERS LABORATORIES STANDARDS.

INSTALLER MUST MEET CONDITIONS OF ACCEPTIBILITY OUTLINED BELOW UPON INSTALLATION:

1. This appliance must be installed in an all metal counter with suitable wiring and control enclosures conforming to national and local electrical codes.
2. Electrical component temperatures, including wiring, within and surrounding the appliance must be monitored in the end use installation for suitability.
3. Electrical grounding of all dead metal parts must be reliably connected to the grounding means of the appliance and must comply with requirements outlined in the appropriate Underwriters Laboratories Inc. classification, national and local electrical codes.
4. Increased clearances are required if storage of combustible materials is in close proximity to this appliance.
5. The name/rating plate information shall be accessible.

TO FABRICATE AND INSTALL:

1. Lay out cutout dimensions on countertop.
2. Cut and/or drill holes as required in countertop.
NOTE: Stiffening around perimeter countertop is not required.
3. Place gasket on underside of flange (see Detail A above).
4. Locate Fryer over countertop cutout.
5. Apply a bead of silicone sealant to underside of fryer flange. This will assure a more effective seal between countertop and fryer gasket. Seat Fryer on countertop.
7. From underneath, insert screwdriver into slots on patented Wellslok frame and twist ears clockwise to secure flange tightly to countertop.
8. Connect service leads to terminal block located on outlet box at rear of Fryer.

NOTE: INSTALLATION MUST MEET LOCAL AND NATIONAL AND ELECTRICAL CODES.



WELLS BLOOMFIELD
10 SUNNEN DRIVE, ST. LOUIS MO 63143

2M-Z18608 REV (-)