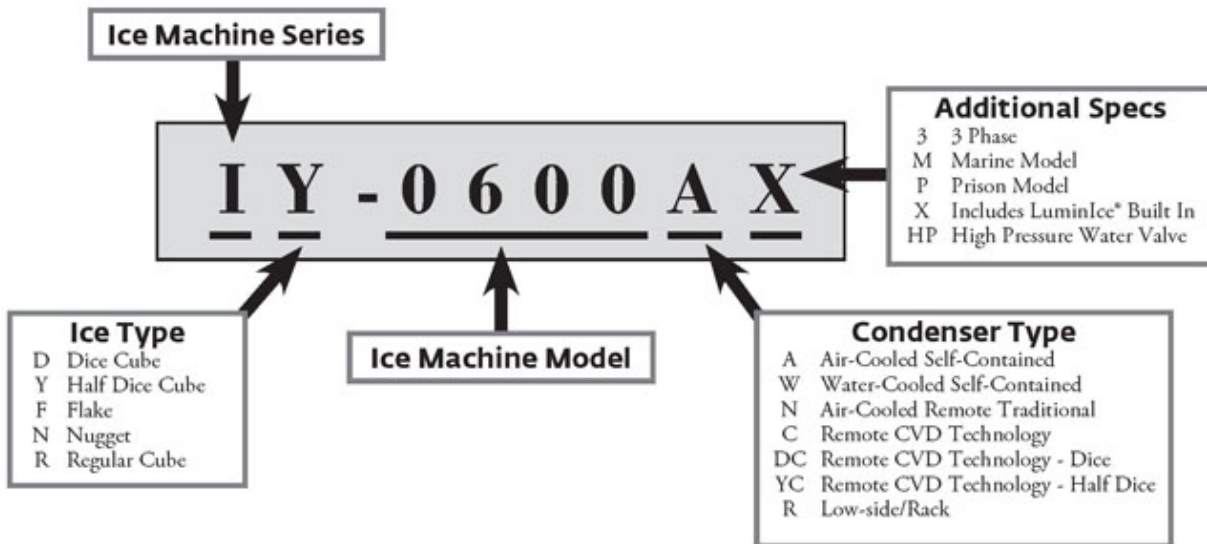




HOW TO READ A MODEL NUMBER



# TABLE OF CONTENTS

Manitowoc Foodservice [Updated: Apr. 23, 2015]

Manitowoc - Ice & Related

Parts Catalog

Ice Machine

Indigo Series

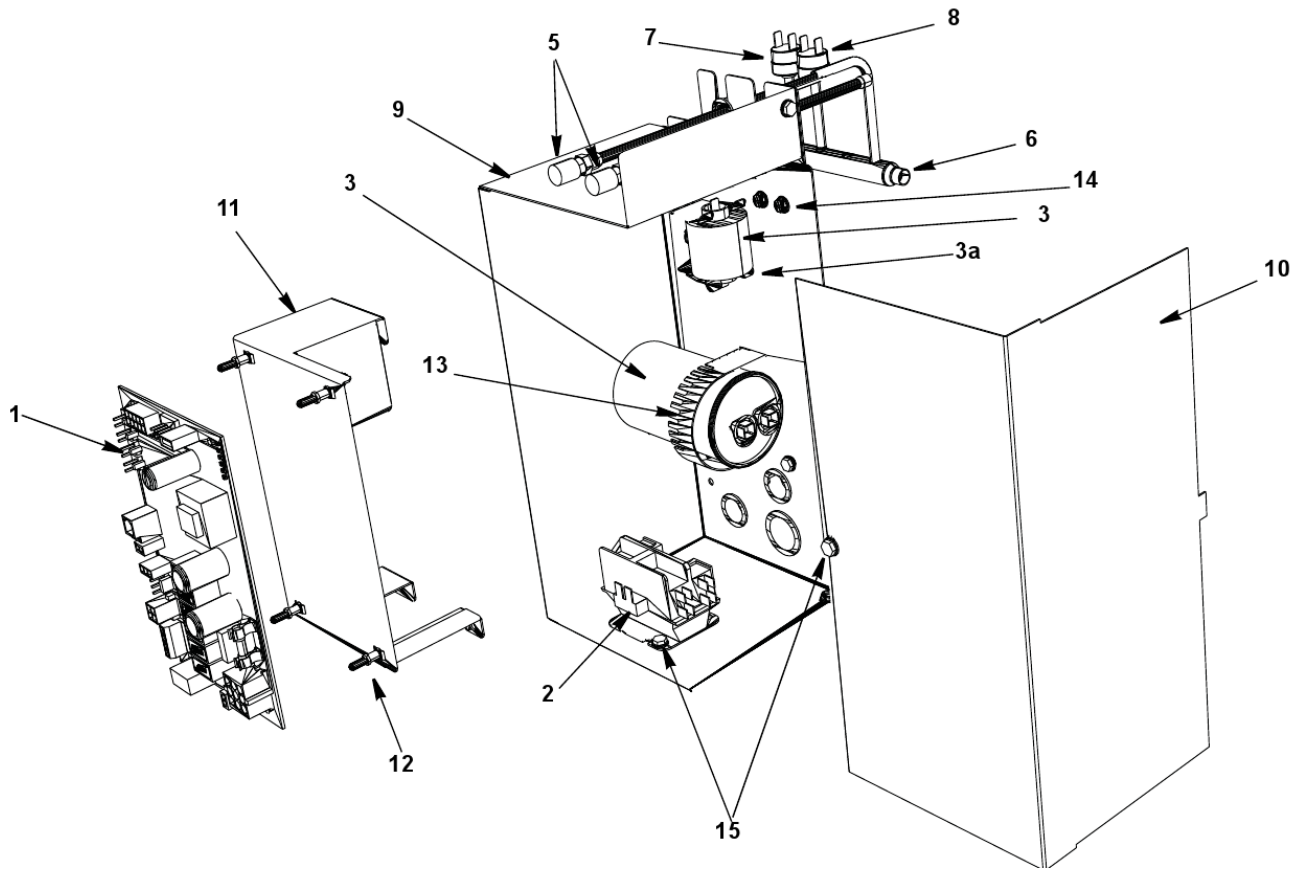
Indigo Model - Air, Water & Remote

i0600, JC0895 Indigo

i0600 Control Box .....	1
i0600 Evaporator Compartment - Common Components .....	4
i0600 Refrigeration Compartment - Common Parts .....	7
i0600 Refrigeration Compartment – Air-cooled .....	10
i0600 Refrigeration Compartment – Water-cooled .....	12
i0600 Refrigeration Compartment – Remote .....	14
i0600 Panels .....	16
JC0895 Remote Condenser .....	19

# i0600, JC0895 Indigo

## I0600 CONTROL BOX



# i0600, JC0895 Indigo

## I0600 CONTROL BOX

#	PART #	DESCRIPTION	QTY	Note
1	000008309	Control Board		
1a	000009181	8 amp Ceramic Fuse - Mounted on Control Board		
2		Contactors		
2a	2006599	Contactors - 230V/50-60 Hz/1 Ph		
3	8504993	PTCR Compressor Starter		
3a	8505013	PTCR Compressor Starter Mounting Bracket		
4		Compressor Run Capacitor - Verify Compressor Manufacturer		
4a		Copeland Compressor		
4a	8503933	Run Capacitor - 115-230V/50-60 Hz/1 Ph		
4b		Bristol Compressor		
4b	2010133	Run Capacitor - 50 Hz		
5	8373263	Refrigeration Service Valve Assembly		
6	8251049	Manifold Strainer		
6a	6058571	Bracket		
7	2001243	HPCO		
8	2001263	Fan Cycling Control - 200-250 psig		[1]
9	000008279	Control Box		
10	000010421	Control Box Cover		
11	000007564	Control Board Mounting Bracket		
12	4302253	Control Board Mounting Supports		
13	6024953	Capacitor Mounting Strap		
14	5202169	Screw - #10-24 x 0.50" Ground		
14a	5573209	Star Washer		
15	5202069	Screw - #10-24 x 0.50" HEX		
16	5573209	Star Washer		
17		Control Box Bushings		
17a	2500019	Bushing - 1.187"		
17b	2501409	Bushing - 0.875"		
18		Control Box Wiring Harness		
18a	000007179	Control Box Wiring Harness - 230V/60 Hz/1 Ph		
18b	000007180	Control Box Wiring Harness - 230V/50 Hz/1 Ph		
19		Compressor Compartment Wiring Harness - Verify Compressor Manufacturer		
		Copeland Compressor		
19a	000007185	Wiring Harness - Compressor Compartment - Air-cooled		
19b	000007177	Wiring Harness - Compressor Compartment - Water-cooled		
19c	000007184	Wiring Harness - Compressor Compartment - Remote Air-cooled		
		Bristol Compressor		
19a	000007178	Compressor Compartment Wiring Harness - Air-cooled		
19b	000007176	Compressor Compartment Wiring Harness - Water-cooled		
19c	000007175	Compressor Compartment Wiring Harness - Remote Air-cooled		

**PART NOTES:**

# i0600, JC0895 Indigo

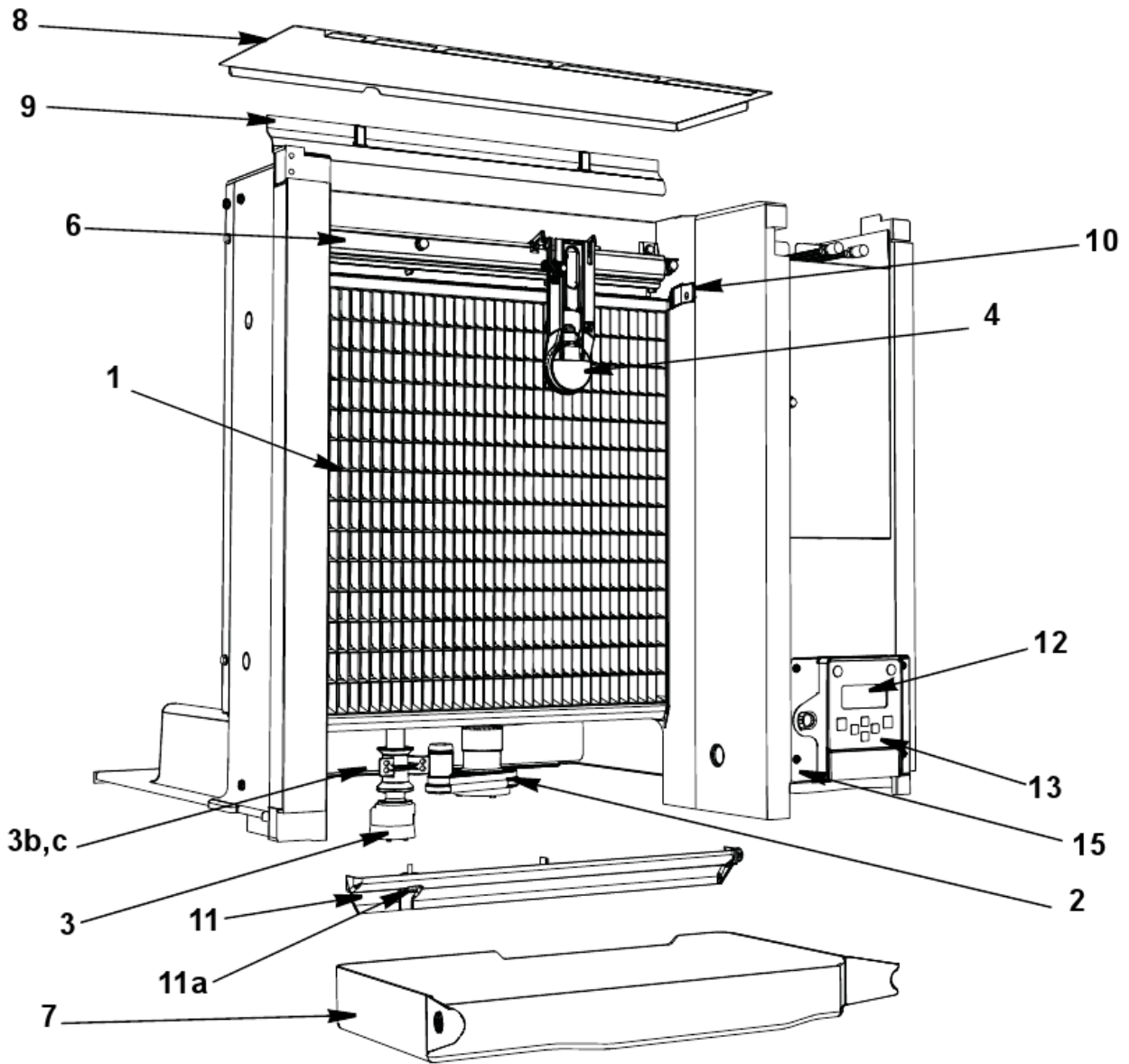
## I0600 CONTROL BOX

### PART NOTES:

[1] - \pages from 200126\_09.jpg" width=150 height=306>

# i0600, JC0895 Indigo

## I0600 EVAPORATOR COMPARTMENT - COMMON COMPONENTS



## I0600 EVAPORATOR COMPARTMENT - COMMON COMPONENTS

#	PART #	DESCRIPTION	QTY	Note
1		Evaporator Assembly Before Serial Number 1101107864		
1a	7602839	Evaporator - Dice Cube		[1]
1b	7602849	Evaporator - Half Dice Cube After Serial Number 1101107864		[1]
1a	000006859	Evaporator - Dice Cube		[2]
1b	000006858	Evaporator - Half Dice Cube		[2]
2		Water Pump		
2a	2007399	Water Pump - 230V/60 Hz		
2b	8252109	Water Pump - 230V/50 Hz		[3]
3	000007052	Water Level Probe		
3a	000007099	Wire - Control Box to Probe		
3b	000007053	Water Level Probe - Holder		
3c	5202099	Screw - #10-24 x 0.50" PHIL		[4]
4	000008660	Ice Thickness Control Probe		
5	4010979	Water Curtain		
6	7602193	Water Distribution Tube - 30" L		
6a	5004649	O-Rings		[5]
7	4003609	Water Trough		[6]
8	000009055	Foodzone Seal Panel		
9	4008469	Evaporator Top Filler Panel		
9a	6063339	Bracket - Top Filler Panel		
9b	5202099	Screw - #10-24 x 0.50" PHIL		
10	7602203	Evaporator Top Frame Assembly		
11	7602213	Water Diverter - 30" Models		
11a	5305123	Thumbscrew SS - #8-32 x 0.44"		
12	000006728	LCD Display		
13	000007926	Touch Pad with Housing		
14	000007737	LCD Wiring Harness - 30" Long		
15	000006697	Touch Pad/Housing Mounting Bracket		
16		Front Panel LCD Frame		
16a	000006647	LCD Frame with Key Guard		
16b	000006564	LCD Frame without Key Guard		
16c	K00433	Display Cover		[7]
17	000006700	Ice Deflector		
18	5004799	Thumbscrew SS - #8-32 x 0.375"		[8]
18a	5004629	O-Ring - 0.125" ID		
19	5004619	Screw - #12-16 x 0.687"		
20	5004659	Water Pump Base O-Ring - 4.00" ID		
21	5004679	Water Pump Outlet O-Ring - 0.875" ID		

**PART NOTES:**

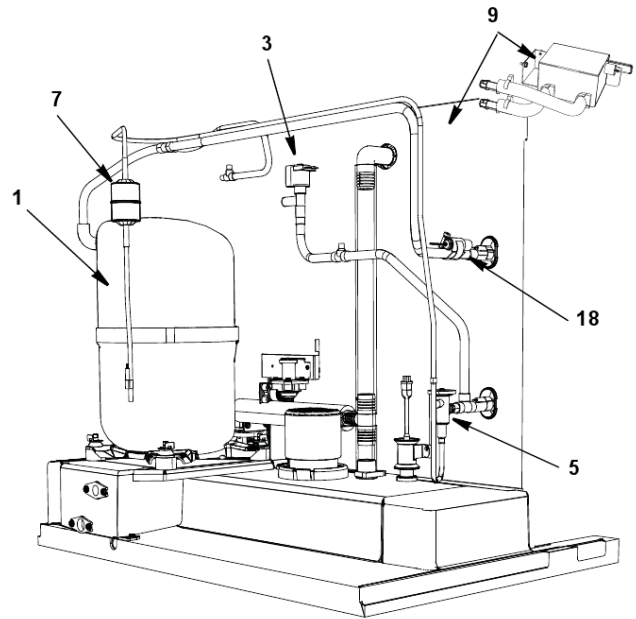
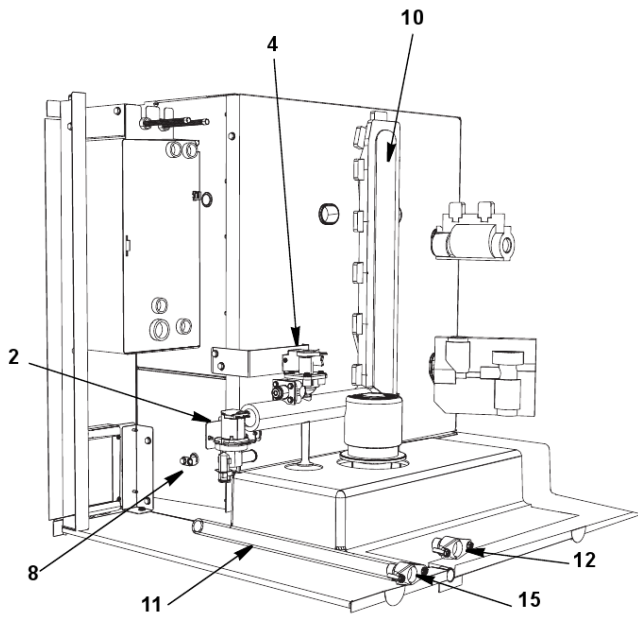
- [1] - Before Serial Number 1101107864
- [2] - After Serial Number 1101107864
- [3] - 50 Hz

## I0600 EVAPORATOR COMPARTMENT - COMMON COMPONENTS

### PART NOTES:

- [4] - Mount Water Level Probe Holder
- [5] - Back of Distribution Assembly
- [6] - \water trough.jpg" width=313 height=169>
- [7] - hides the display completely
- [8] - Water Distribution Tube Mounting Each

I0600 REFRIGERATION COMPARTMENT - COMMON PARTS



# i0600, JC0895 Indigo

## I0600 REFRIGERATION COMPARTMENT - COMMON PARTS

#	PART #	DESCRIPTION	QTY	Note
		NOTE: Copeland compressors are no longer available, order a bristol compressor AND the corresponding conversion kit.		
1		Bristol Compressor		
1a	000009307	Bristol Compressor - 208-230V/60 Hz/1 Ph		
1b	000009959	Bristol Compressor - 230V/50 Hz/1 Ph		
1c	000009957	Bristol Compressor - 230V/60 Hz/ 3 Ph		
1d	000005176	Compressor Molded Plug Wiring Harness		
		Conversion Kit to Replace Copeland Compressor with Bristol Compressor		
1f	000009960	Air/Water Models Kit		
1g	000009958	Remote Models Kit		
2		Water Dump Valve		[1]
2a	000001768	Water Dump Valve - 208-230V/50-60 Hz		
2b	6058459	Water Dump Valve Mounting Bracket		
2c	4420383	Clear Tubing - 0.625" ID		
3		Harvest Valve		
3a	000007019	Solenoid Valve with Electrical Coil - 208-230V/50-60 Hz		
3b	000005157	Danfoss Solenoid Valve Coil Only - 230V/50-60 Hz		[2]
4		Water Inlet Valve with Bracket		
4a	000009122	Water Inlet Valve - 208-230V/50-60 Hz		
5		Expansion Valve - See Air, Water or Remote Page		
5a	4000363	Valve Insulation Boot - Body		[3]
5b	4007203	Valve Insulation Boot - Bulb		[4]
6	000008310	Thermistor with Spring Clips		
7		Drier - See Air, Water or Remote Page		
8	000007888	Magnetic Bin Switch		
a	000007410	Bin Switch Wiring Harness		
9	K00424	LuminIce		
9a	K00425	LuminIce Bulb		
9b	000007409	LuminIce Wiring Harness		
9c	000007990	Bulkhead Fitting 2.25"		
9d	000008269	Bulkhead Fitting 2.75"		
10	000003405	Insulated Tube		[5]
10a	5650609	Snap Clamp - 1.0" ID		
10b	5650709	Snap Clamp - 0.799"/0.899" ID		
11	000001382	Vinyl Tubing 0.625" ID		[6]
11a	6038831	Insulation 0.88 ID X 0.25W X 13.50L		
11b	5650709	Snap Clamp - 0.799"/0.899" ID		
12	8706093	Female Wing Adapter - 0.375"		
12a	1360961	Male Connector		
13	4010439	Tubing - Water Inlet Valve		[7]
14	1360989	Connector - Water Inlet Valve		
15	8706133	Female Wing Adapter - 0.50"		
16		Compressor Mounting		
16a	6061709	Compressor Mounting Base		
16b	8503069	Mounting - Rubber Grommet		

## I0600 REFRIGERATION COMPARTMENT - COMMON PARTS

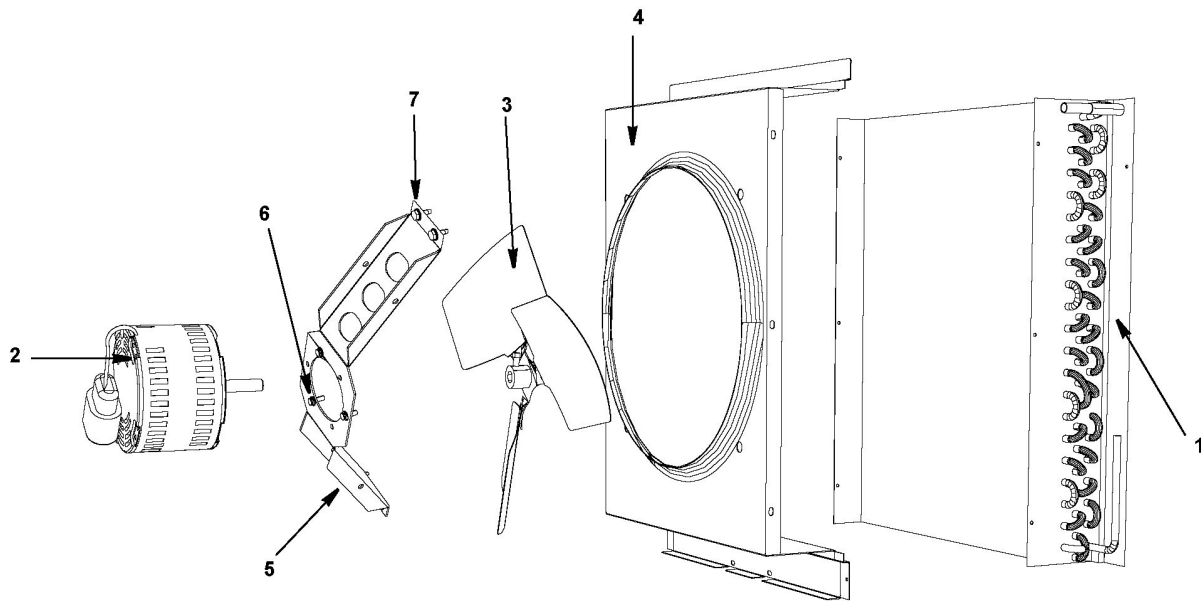
#	PART #	DESCRIPTION	QTY	Note
16c	8503949	Mounting - Sleeve		
16d	5004819	Compressor Mounting - Bolt		
16e	5004829	Compressor Mounting - Nut		
17	5650529	Clamp - Expansion Valve Bulb		
18	3000503	Strap - Expansion Valve Bulb - 0.5"		
19	5202069	Screw - #10-24 x 0.50" HEX		

### PART NOTES:

- [1] - (with bracket)
- [2] - \pages from 000005156\_02.jpg" width=266 height=183>
- [3] - \400036\_05.jpg" width=2436 height=1463>
- [4] - \pages from 400720\_08.jpg" width=923 height=583>
- [5] - (vinyl tubing from distribution tube to water pump & dump valve)
- [6] - (dump valve to drain adapter)
- [7] - \pages from 401043\_05.jpg" width=1797 height=2238>

# i0600, JC0895 Indigo

## I0600 REFRIGERATION COMPARTMENT – AIR-COOLED



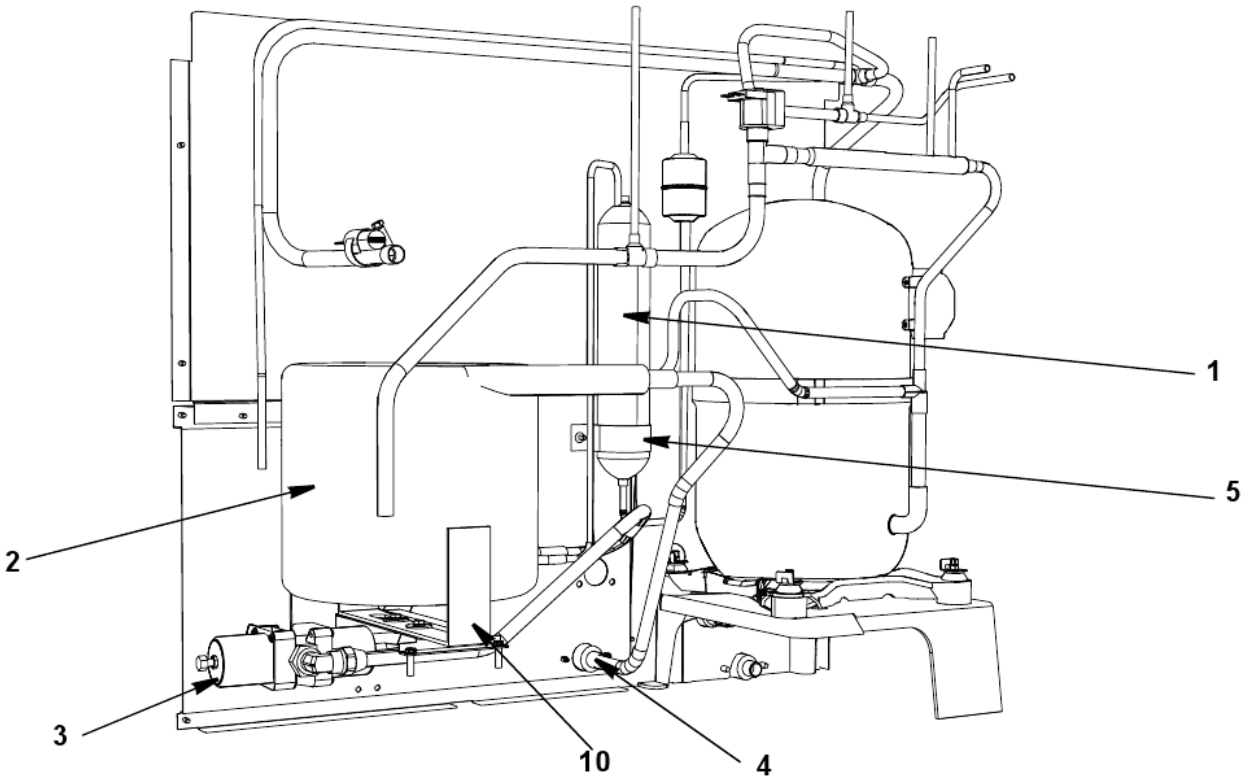
# i0600, JC0895 Indigo

## I0600 REFRIGERATION COMPARTMENT – AIR-COOLED

#	PART #	DESCRIPTION	QTY	Note
1	8252949	Air Condenser		
2		Fan Motor		
2a	2412939	Fan Motor 208-230V/50-60 Hz		
3	2416173	Fan Blade		
4	000002485	Fan Shroud		
5	6061869	Fan Motor Bracket		
6	5033589	Mounting - Screw		
6a	5545109	Lockwasher		
6b	5429529	Mounting - Hexnut		
7		Fan Bracket Mounting		
7a	5033589	Mounting - Screw		
7b	5545109	Lockwasher		
7c	5573059	Mounting - Flatwasher		
7d	5429559	Mounting - Rubber Wellnut		
8	5202069	Screw - #10-24 x 0.50" HEX		
9	8930259	Drier		
10	7601583	Expansion Valve		

# i0600, JC0895 Indigo

## I0600 REFRIGERATION COMPARTMENT – WATER-COOLED



# i0600, JC0895 Indigo

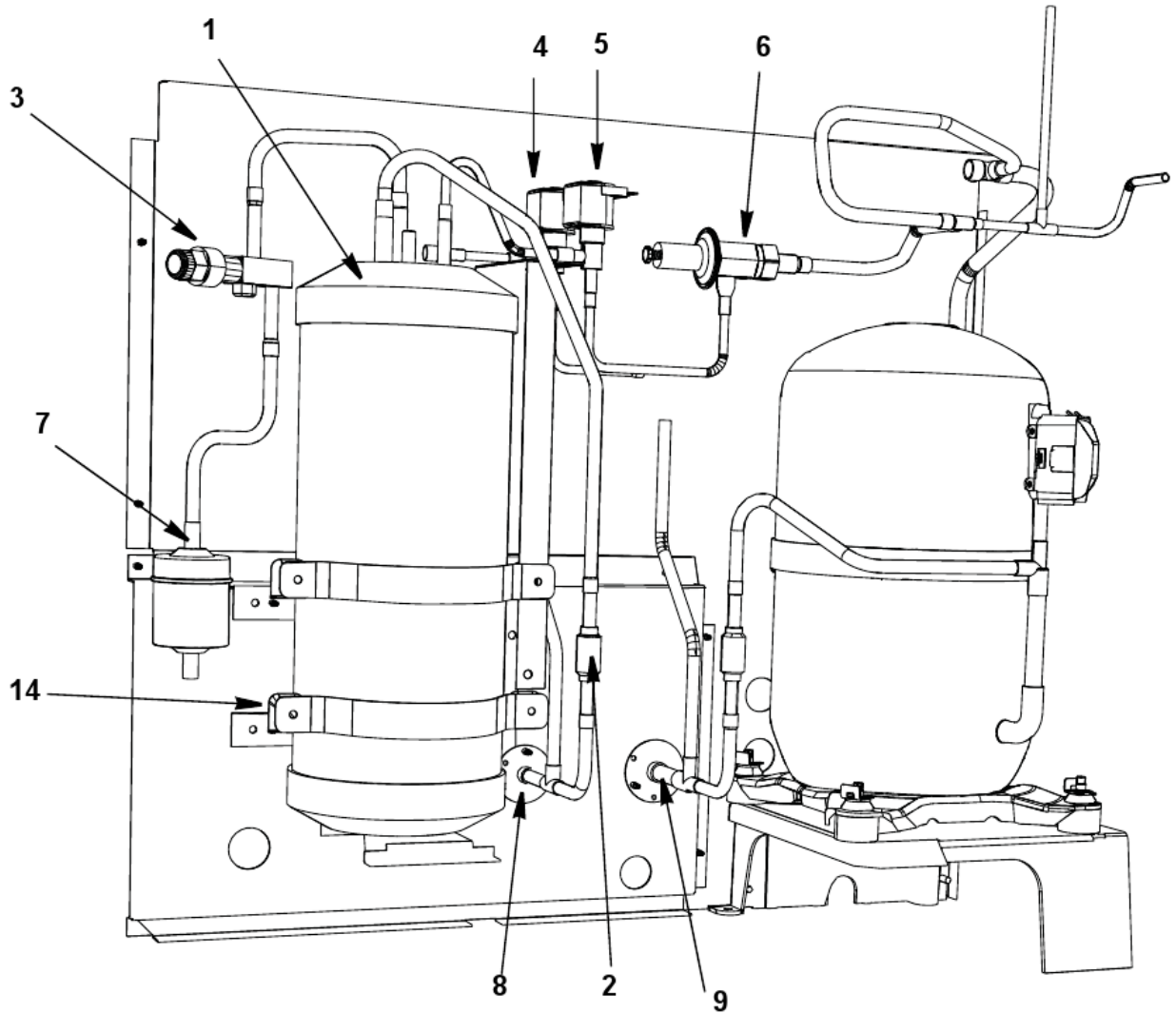
## I0600 REFRIGERATION COMPARTMENT – WATER-COOLED

#	PART #	DESCRIPTION	QTY	Note
1	000008892	Receiver		
2	8253039	Water-cooled Condenser		
3		Water Regulating Valve - See Note for Serial Break		
3a	8372069	Water Regulating Valve		[1]
3b	000007546	Water Regulating Valve		[2]
3c	000007695	Bracket - Water Regulating Valve		
4	8706083	Female Wing Adapter - 0.50"		
5	6000541	Receiver Strap		
6	5002159	Elbow 3/8 MF x 3/8 MPT		[3]
7	5002249	Elbow - 0.5" MF x 0.375" MPT		[4]
8	5202069	Screw - #10-24 x 0.50" HEX		
9	5573419	Washer		
10	6058659	Base, Water Condenser/Receiver		
11	8930259	Drier		
12	7600193	Expansion Valve		

### PART NOTES:

- [1] - Before Serial Number 1101107864
- [2] - After Serial Number 1101107864
- [3] - (Copeland Compressor)
- [4] - (Bristol Compressor)

I0600 REFRIGERATION COMPARTMENT – REMOTE



# i0600, JC0895 Indigo

## I0600 REFRIGERATION COMPARTMENT – REMOTE

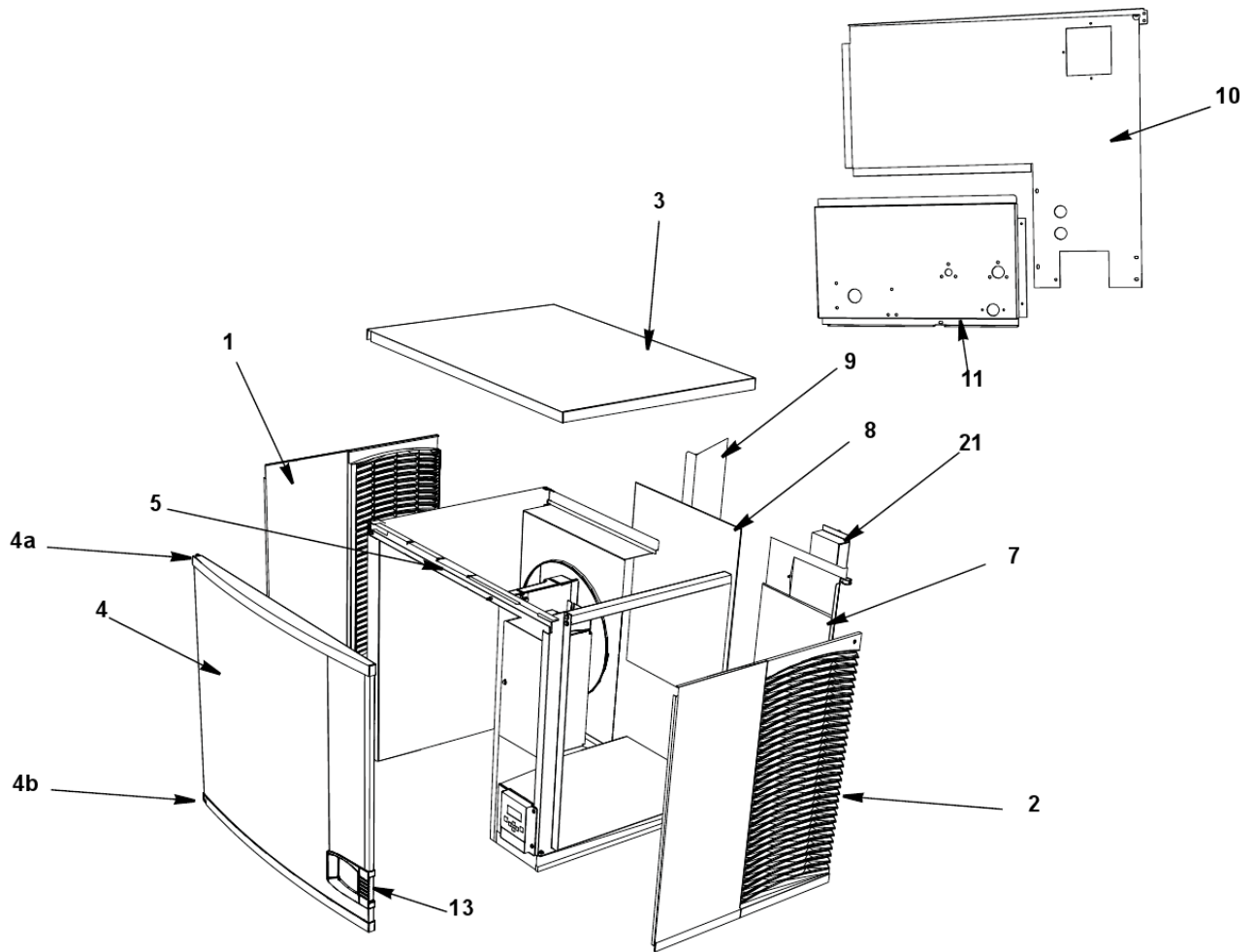
#	PART #	DESCRIPTION	QTY	Note
1	8250583	Receiver		
2	8373149	Magni-Check Valve - 0.375"		
3	8373169	Receiver Service Valve		
3a	5650753	Caps for Refrigeration Service Valve		
4		Harvest Pressure Regulating Solenoid (HPR) Valve		
4a	000007034	Solenoid Valve Including - 208-230V/50-60 Hz Electrical Coil		[1]
4b	000005157	Danfoss Solenoid Valve Coil Only - 230V/50-60 Hz		[2]
5		Liquid Line Solenoid (LLS) Valve		
5a	000007032	Solenoid Valve Including - 208-230V/50-60 Hz Electrical Coil		[1]
5b	000005157	Danfoss Solenoid Valve Coil Only - 230V/50-60 Hz		[2]
6	8367793	Harvest Pressure Regulating Valve		
7	8930279	Drier		
8	8360343	Coupling - Male - 0.625"-18		
9	8360353	Coupling - Male - 1.17"-12		
10	5000673	Coupling Male Reducing 3/8" x 1/4"		[3]
11	8360053	Coupling Mounting Flange for 0.625"-18		
12	8360063	Coupling Mounting Flange for 1-1/16-12		
13	5650619	Screw Mounting Base		
14		Receiver Mounting		
		Receiver Mounting Before Serial Number 1101107864		
14a	6000561	Receiver Mounting Bracket		[4]
14b	6307214	Receiver Mounting Strap		
14c	000006721	Support Bracket		
14d	6058659	Base, Water Condenser/Receiver		
14e	5202069	Screw - #10-24 x 0.50" HEX		
		Receiver Mounting After Serial Number 1101107864		
14a	6063149	Receiver Mounting Strap		
14b	6063039	Receiver Mounting Bracket		
14c	000006655	Support Bracket		
14d	000011794	Base		
14e	5202069	Screw - #10-24 x 0.50" HEX		
15	7600193	Expansion Valve		

### PART NOTES:

- [1] - Danfoss
- [2] - \pages from 000005156\_02.jpg" width=266 height=183>
- [3] - After Serial Number 1101107864
- [4] - between receiver and panel

# i0600, JC0895 Indigo

## I0600 PANELS



# i0600, JC0895 Indigo

## I0600 PANELS

#	PART #	DESCRIPTION	QTY	Note
1	000005217	Left Side Panel		
2	000005215	Right Side Panel		
3	000006699	Top Cover		
4	000006577	Front Panel Assembly		
4a	000006538	Top Endcap		
4b	000006539	Bottom Endcap		
5	000010051	Front Top Support		
5a	5005379	Mounting Screw - #8-32 x 1.0" PHIL		
5b	5005099	Screw - #10-16 x 0.625"		
6	6061709	Compressor Mounting Base		
7		Air-cooled Back Panels		
7a	6065959	Back Panel with Electrical Connection Box, Air-cooled Models		[1]
7b	000009146	Back Panel - Air-cooled Models		[2]
8	3005689	Air Filter		
9	000007314	Air Baffle Assembly		
		Water-cooled & Remote Air-cooled Back Panels		
10		Back Panel with Electrical Connection Box - See Note for Serial Break		
10a	6072071	Back Panel with Electrical Connection Box - Water-cooled and Remote Air-cooled		[1]
10b	000009153	Back Panel with Electrical Connection Box - Water-cooled and Remote Air-cooled		[2]
11	6061739	Back Coupling Panel - Water-cooled and Remote Air-cooled		
12	8706083	Female Wing Adapter - 0.50"		
13		Front Panel LCD Frame		
13a	000006647	LCD Frame with Key Guard		
13b	000006564	LCD Frame without Key Guard		
13c	K00433	Display Cover		[3]
14	5004899	Front Door Screw		
15	7602263	Bottom Door Frame		
15a	5005379	Mounting Screw - #8-32 x 1.0" PHIL		
15b	5202099	Screw - #10-24 x 0.50" PHIL		
16	3005579	Left Door Pivot Leaf Hinge		[4]
16a	5005379	Mounting Screw - #8-32 x 1.0" PHIL		
17	6068649	Left Top Channel		
18	6062579	Right Top Channel		
19	6062939	Left Corner Post		
20	6062929	Right Corner Post		
21	6067289	Rear Connection Box		
21a	6067299	Cover - Rear Connection Box		
21b	5202169	Screw - #10-24 x 0.50" Ground		
22		Terminal Block		
22a	2006143	Copeland Terminal Block - 50 Hz - 3 Pole		[5]
22b	2006143	Bristol Terminal Block - 50 Hz - 3 Pole		[6]
22c	000007772	Bristol Terminal Block - 6 Pole		[7]
23	7112239	Cartoning		

# i0600, JC0895 Indigo

## I0600 PANELS

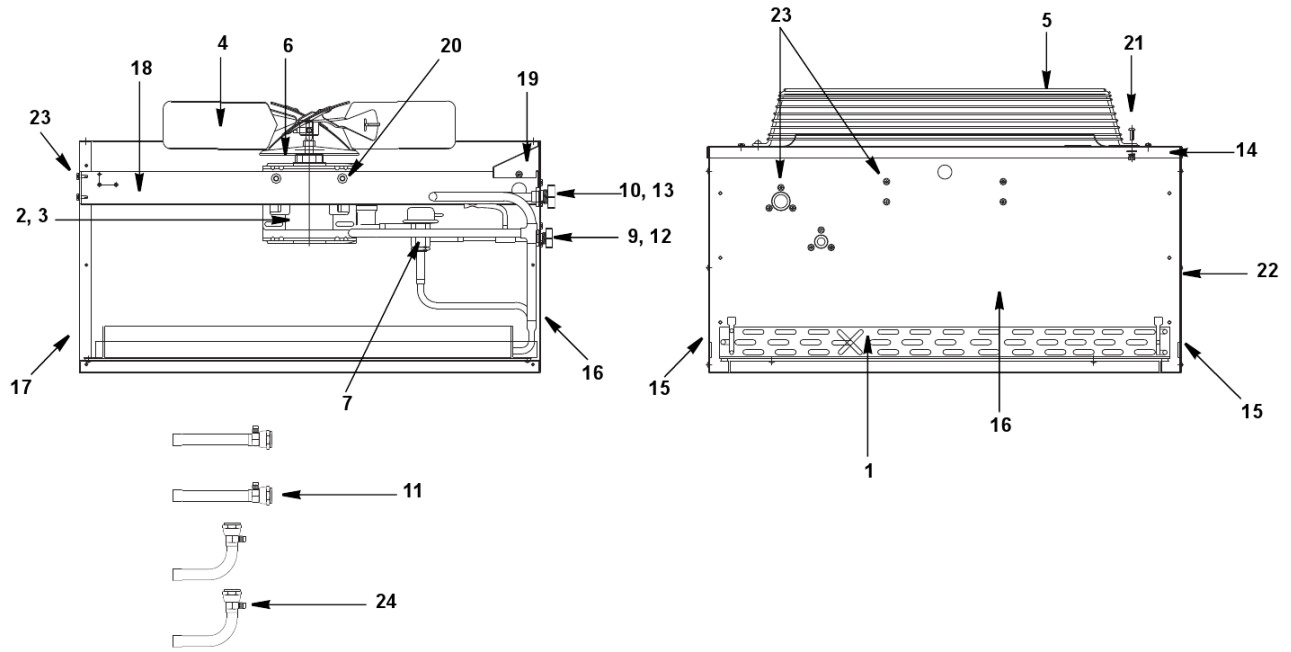
#	PART #	DESCRIPTION	QTY	Note
---	--------	-------------	-----	------

---

**PART NOTES:**

- [1] - Before Serial Number 1101107864
- [2] - After Serial Number 1101107864
- [3] - (hides the display completely)  
hides the display completely
- [4] - (Top or Bottom)
- [5] - (Air/Water/Remote)
- [6] - (Air/Water)
- [7] - (Remote)

JC0895 REMOTE CONDENSER



# i0600, JC0895 Indigo

## JC0895 REMOTE CONDENSER

#	PART #	DESCRIPTION	QTY	Note
1	8850629	Air Condenser		
2	7629413	Fan Motor - 208-230V/50-60 Hz/1 Ph		
3	8504583	Fan Motor Run Capacitor		[1]
4	2416113	Fan Blade		
5	3400643	Fan Guard		
6	2415053	Rain Slinger		
7	000004070	Head Pressure Control Valve		
8	000008040	Terminal Block - 3 Pole		
9	8360343	Coupling - Male - 0.625"-18		
10	8360353	Coupling - Male - 1.17"-12		
11	K00129	Female Line Set Coupling Kit		
12	8360053	Coupling Mounting Flange for 0.625"-18		
13	8360063	Coupling Mounting Flange for 1-1/16-12		
14	6017751	Top Cover		
15	6017741	Panel - Side		
16	6017731	Panel - Rear		
17	6017721	Panel - Front		
18	6017681	Fan Motor Mounting Bracket		
19	6017761	Electrical Box Cover		
20	5035659	Fan Motor Mounting Screw		[2]
20a	5573099	Mounting - Flatwasher		
20b	5573139	Mounting - Lockwasher		
20c	5429759	Mounting - Hexnut		
21	5033459	Screw - 0.25"-20 x 0.625"		
21a	5573049	Flatwasher		
21b	5545119	Mounting - Lockwasher		
21c	5429529	Mounting - Hexnut		
22	5121539	Panel/Condenser Mounting Screw - #8 x 0.50"		
22a	5544599	Panel/Condenser Mounting Lockwasher		
23	5202069	Screw - #10-24 x 0.50" HEX		
24	7626843	Valve Cores		[3]
25	6017691	Legs		
26	7108369	Cartoning		

### PART NOTES:

- [1] - (Emerson)
- [2] - (5/16-18 x 5/8)
- [3] - (used in line sets)