

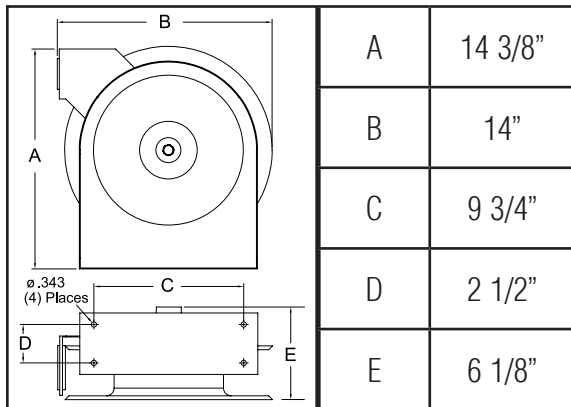
# Operating Instructions

## Spring Driven Hose Reels

Open Pre-Rinse Model Numbers:

24-602 24-603

### Dimensions



### SAFETY

1. Do not use reel at higher pressures or temperatures than listed on the back of this bulletin.
2. Remove all spring tension before beginning disassembly process.

**INSTALLATION:** A flexible hose connection must be used between the hose reel inlet and the source of supply to prevent possible misalignment and binding.

**MOUNTING:** The hose reel is equipped with a universal mounting bracket so that it can be mounted on the floor, wall or ceiling; whichever place is convenient. The hose guide arm can be moved to the position desired by removing the screws fastening the guide bracket to the reel base. Shift the guide arm bracket so the hose comes off the reel at the desired position and replace the screws. **NOTE:** For proper installation in wall mount applications, ensure reel is mounted with inlet on the right as you are facing the reel. Failing to do so could cause latching issues.

**LUBRICATION:** Hose reel spring and bearings are factory lubricated and require no further lubrication.

**REPLACING HOSE:**

1. Wind spool flange clockwise-facing swivel-until spring is tight.
2. Back off three turns and latch.
3. Insert hose through roller guide.
4. Connect hose fitting to swivel joint and secure hose with clamps.

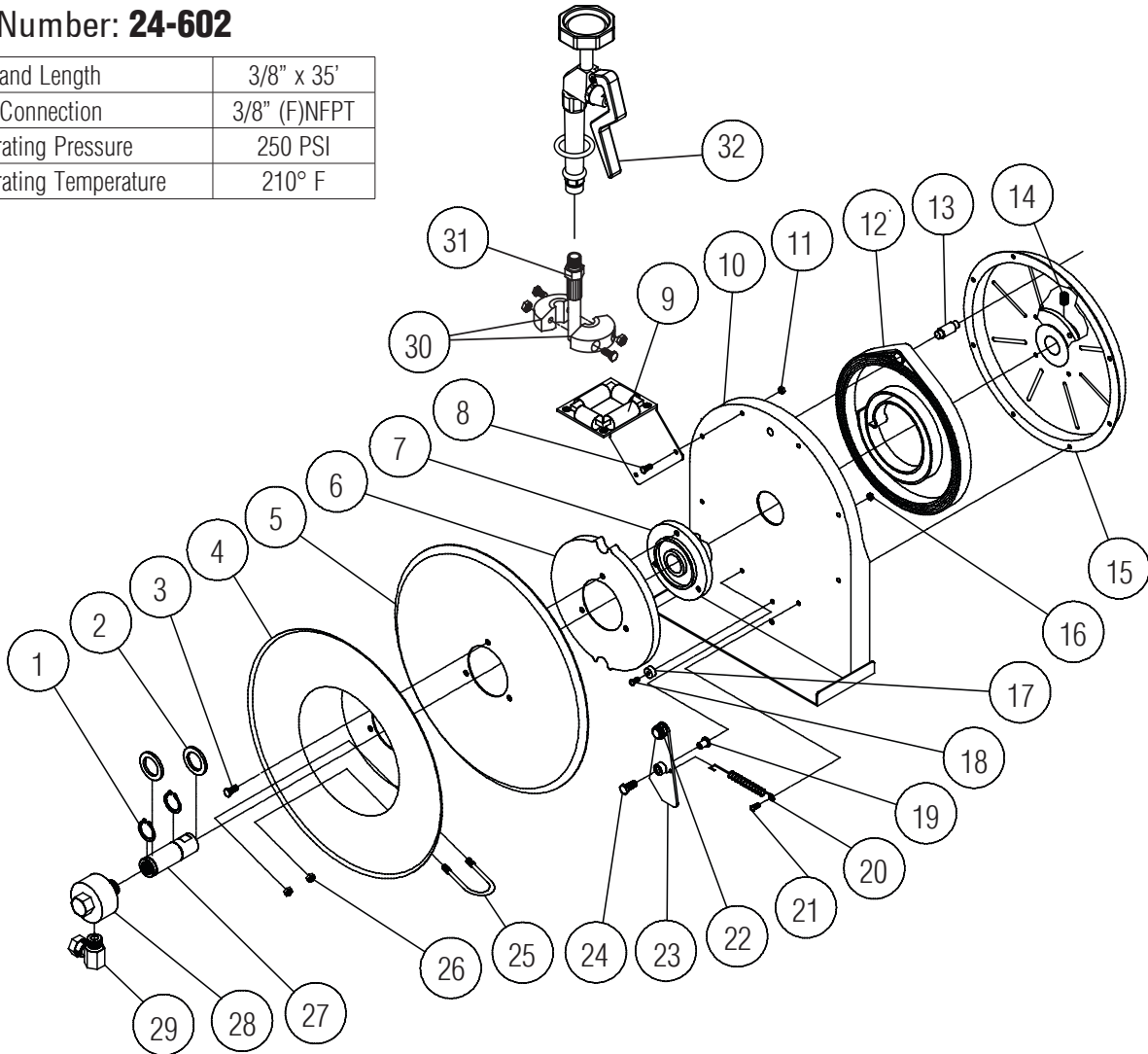
**ADJUSTMENTS:** To adjust spring tension, add or remove wraps of hose from the spool, one wrap at a time until desired tension is obtained.

**REPAIRS:** Extensive repairs should be performed only by an authorized serviceman or factory to avoid damage which may void your warranty. Remove all spring tension before beginning disassembly process.

Form #1305-418 Rev: 4/2018

**Model Number: 24-602**

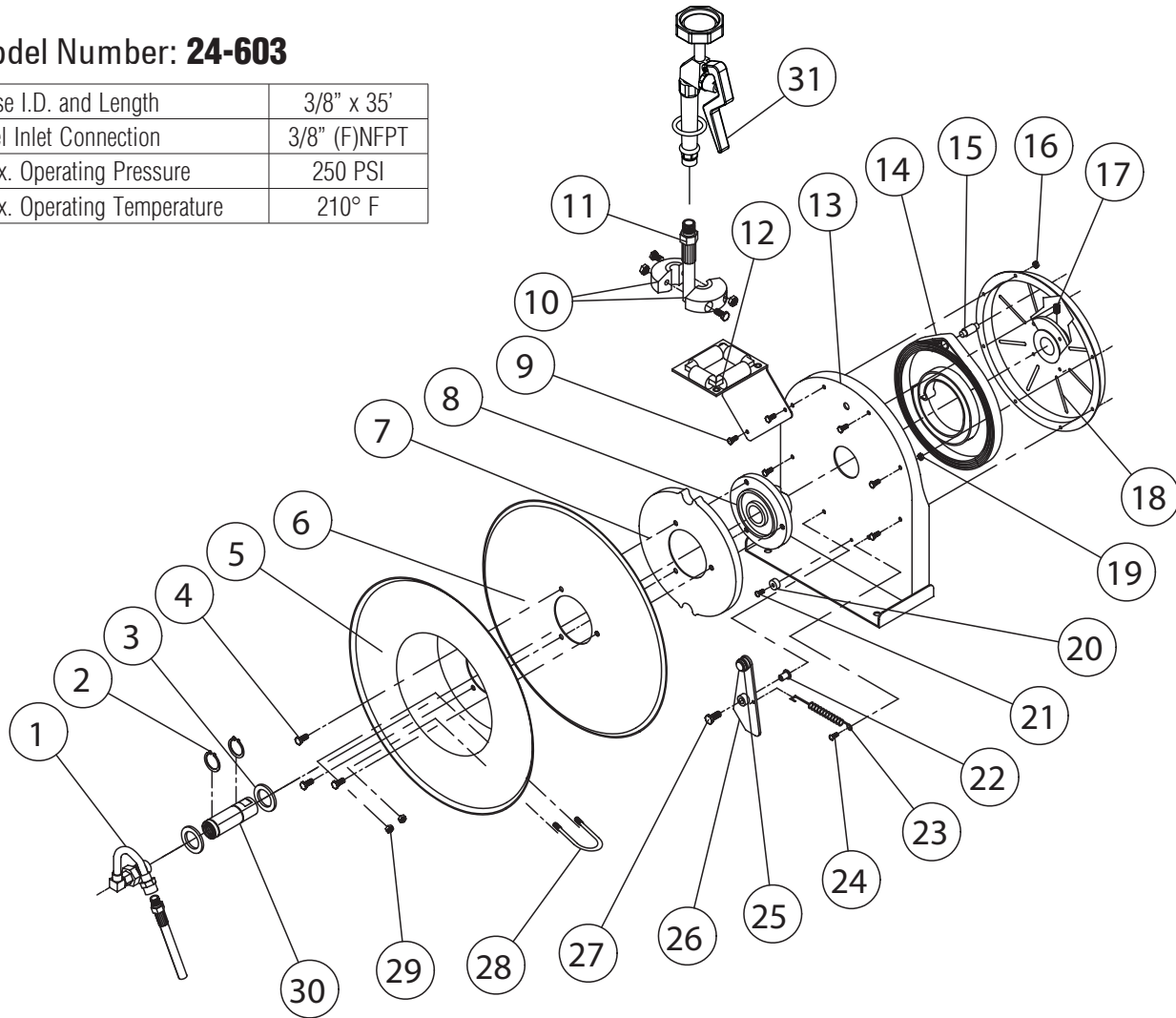
Hose I.D. and Length	3/8" x 35'
Reel Inlet Connection	3/8" (F)NFPT
Max. Operating Pressure	250 PSI
Max. Operating Temperature	210° F



Item #	Part #	# Req.	Description	Item #	Part #	# Req.	Description
1	S147-25	2	1" Snap Ring	17	S400021	1	Latch Bumper
2	260238	2	Spacing Washer	18	S332-117	1	10-24 x 3/8" Machine Screw
3	S324-102	3	1/4-20 x 5/8" Screw	19	S260225	1	Latch Bushing
4	260221	1	Sheave Flange	20	S400018	1	Latch Spring
5	260223	1	Sheave Disc	21	S46-105	5	10-32 x 3/8" Screw
6	260224	1	Latch Cam	22	400020	1	O-ring
7	S260648	1	Spring Arbor	23	S600062	1	Latch Plate Assembly
8	S46-107	2	10-32 x 1/2" Screw	24	300035	1	10-32 x 1" Screw
9	S600057	1	Guide Arm Assembly	25	260242	1	U-bolt
10	600056	1	Base Assembly	26	S96-13	2	1/4-20 x 3/8" Hex Nut
11	260239	7	10-32 Hex Lock Nut	27	S262922	1	Mainshaft
12	S504240	1	Drive Spring Assembly	28	S602689-1	1	Swivel Assembly
13	261361	1	Spring Case Stud	29	S160-3	1	90° Street Ell
14	S47-64	1	3/8-16 x 1/2" Set Screw	30	1-HS1004	1	Bumper Stop Assembly
15	600061-1	1	Spring Case Assembly	31	601154-2	1	Hose Assembly
16	S95-22	1	10-32 x 3/8" Hex Nut	32	700228	1	Spray Valve

Model Number: **24-603**

Hose I.D. and Length	3/8" x 35'
Reel Inlet Connection	3/8" (F)NPT
Max. Operating Pressure	250 PSI
Max. Operating Temperature	210° F



Item #	Part #	# Req.	Description	Item #	Part #	# Req.	Description
1	S600886	1	Swivel Assembly	17	300006	1	3/8-16 x 1/2" Set Screw
2	300031	1	1" Snap Ring	18	500103-39	1	Spring Case Assembly
3	300034	2	Spacing Washer	19	S82-15	1	10-32 x 3/8" Nyloc Nut
4	S295-102	3	1/4" Plastite Hex Screw	20	S400021	1	Latch Bumper
5	260022-39	1	Sheave Flange	21	S32-136	1	10-24 x 3/8" Mach. Screw
6	500006-39	1	Sheave Disk	22	S400012	1	Latch Bushing
7	S500019	1	Latch Cam	23	S400018	1	Latch Spring
8	S260648	1	Spring Arbor	24	300001	5	10-32 x 3/8" Screw
9	300002	2	10-32 x 1/2" Screw	25	400020	1	O-ring
10	1-HR1004	1	Bumper Stop Assembly	26	S400109	1	Latch Plate Assembly
11	601154-1	1	Hose Assembly	27	300035	1	10-32 x 1" Mach. Screw
12	500107-39	1	Guide Arm & Roller Assembly	28	3-117440	1	U-bolt
13	500101-39	1	Base Assembly	29	261650-1	2	1/4-20 Zinc Nyloc Nut
14	S504240	1	Drive Spring Assembly	30	S400015	1	Main Shaft
15	S300011	7	10-32 Hex Lock Nut	31	700228	1	Spray Valve
16	S261360	1	Spring Case Stud				

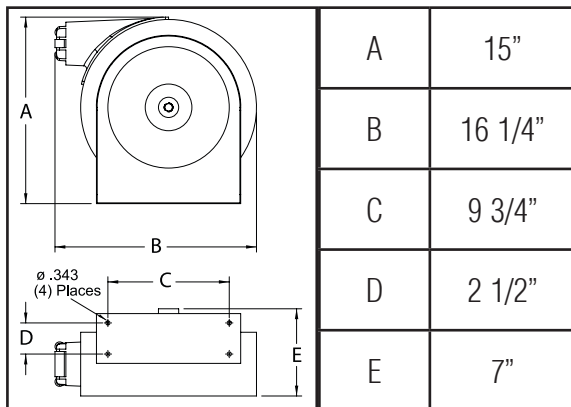
# Operating Instructions

## Spring Driven Hose Reels

Enclosed Pre-Rinse Model Numbers:

24-600    24-601

### Dimensions



### SAFETY

1. Do not use reel at higher pressures or temperatures than listed on the back of this bulletin.
2. Remove all spring tension before beginning disassembly process.

### INSTALLATION:

A flexible hose connection must be used between the hose reel inlet and the source of supply to prevent possible misalignment and binding.

### MOUNTING:

The hose reel is equipped with a universal mounting bracket so that it can be mounted on the floor, wall or ceiling; whichever place is convenient. The hose guide arm can be moved to the position desired by removing the 1/4-20 hex nuts (4) fastening the hose guide enclosure to the reel back cover. Shift the hose guide enclosure to the desired position and replace the 1/4-20 hex nuts. **NOTE:** For proper installation in wall mount applications, ensure reel is mounted with inlet on the right as you are facing the reel. Failing to do so could cause latching issues.

### LUBRICATION:

Hose reel spring and bearings are factory lubricated and require no further lubrication.

### REPLACING HOSE:

1. Remove 1/4-20 hex nuts (4) which fasten the hose guide enclosure to the reel back cover and pull off the enclosure.
2. Wind spool flange clockwise-facing swivel-until spring is tight.
3. Back off three turns and latch.
4. Insert hose through roller guide.
5. Connect hose fitting to swivel joint and secure hose with clamps.

### ADJUSTMENTS:

To adjust spring tension, add or remove wraps of hose from the spool, one wrap at a time until desired tension is obtained.

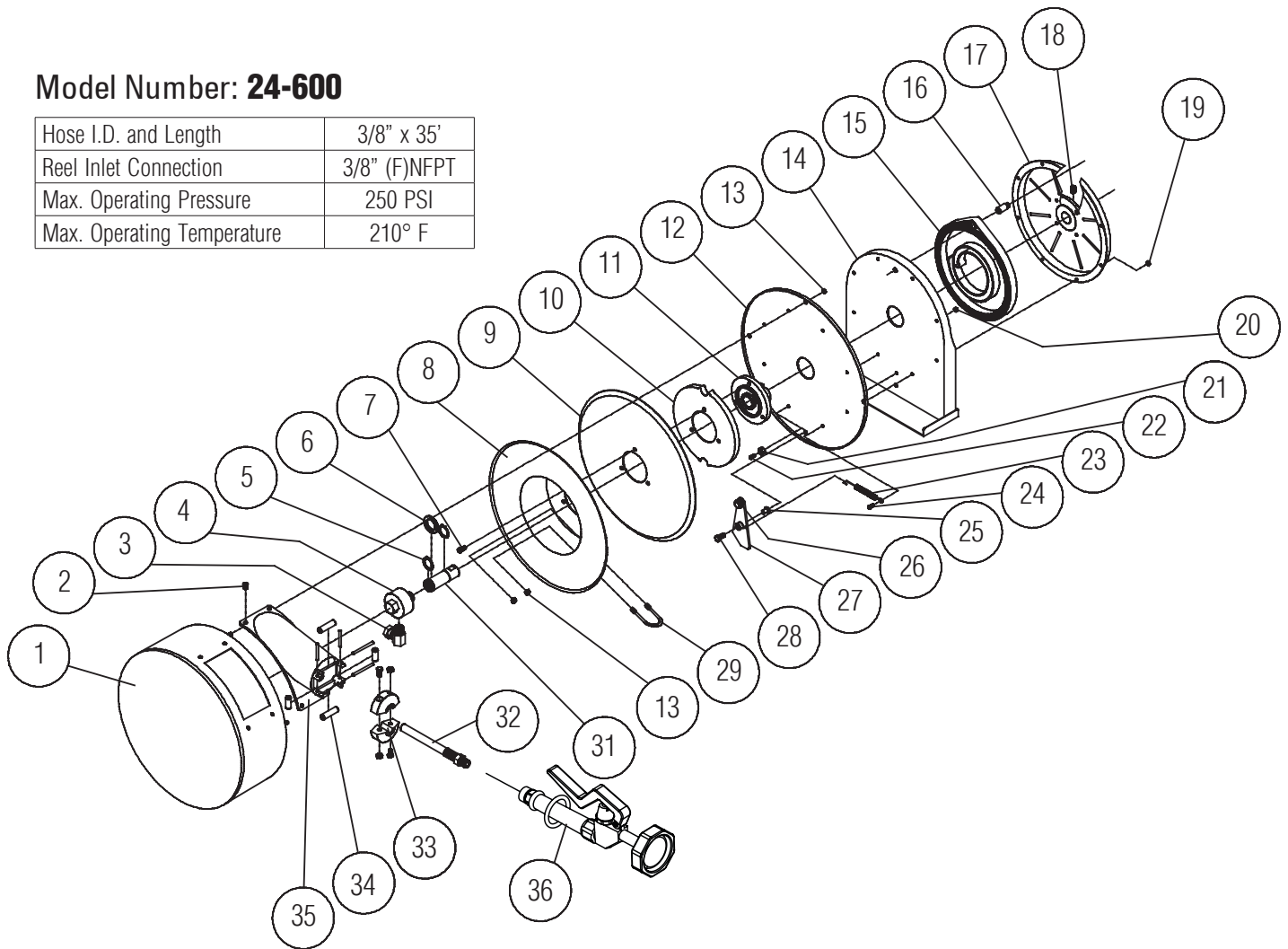
### REPAIRS:

Extensive repairs should be performed only by an authorized serviceman or factory to avoid damage which may void your warranty. Remove all spring tension before beginning disassembly process.

Form #1305-418 Rev: 4/2018

**Model Number: 24-600**

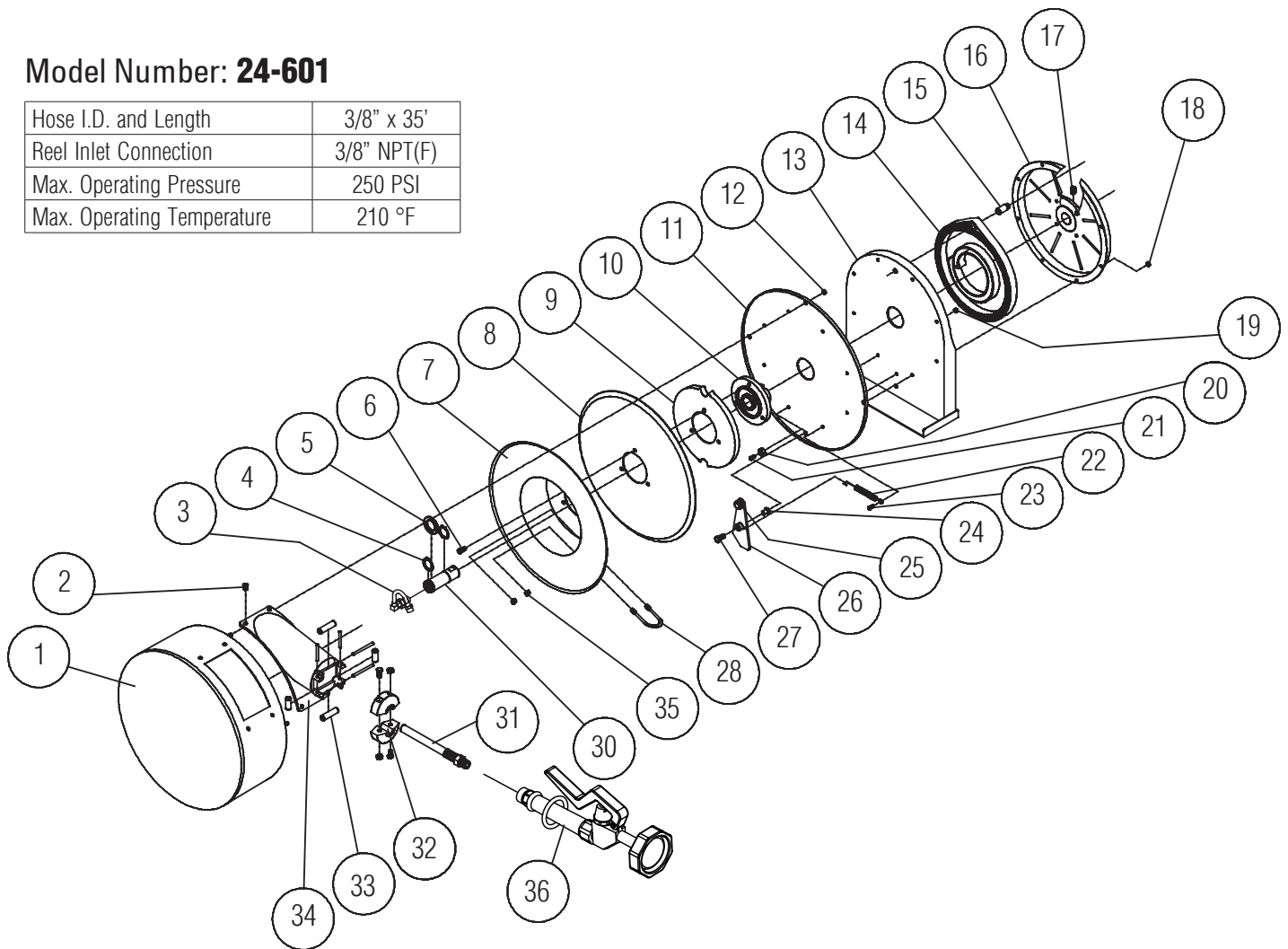
Hose I.D. and Length	3/8" x 35'
Reel Inlet Connection	3/8" (F)NFPT
Max. Operating Pressure	250 PSI
Max. Operating Temperature	210° F



Item #	Part #	# Req.	Description	Item #	Part #	# Req.	Description
1	600658	1	Case & Cover Assembly	19	260239	7	10-32 Hex Lock Nut
2	S46-105	4	10-32 x 3/8" Screw	20	S95-22	1	10-32 x 3/8" Nyloc Nut
3	S160-3	1	90° Street Ell	21	S400021	1	Latch Bumper
4	602689-1	1	Swivel Assembly	22	S332-117	1	10-24 x 3/8" Screw
5	S147-25	2	1" Snap Ring	23	S400018	1	Latch Spring
6	260238	4	Spacing Washer	24	S46-107	7	10-32 x 1/2" Screw
7	S324-102	3	1/4-10 x 5/8" Hex Screw	25	S260225	1	Latch Bushing
8	260221	1	Sheave Flange	26	400020	7	Oring
9	260223	1	Sheave Disk	27	S600062	1	Latch Plate Assembly
10	260224	1	Latch Cam	28	300035	1	10-32 x 1" Mach. Screw
11	S260648	1	Spring Arbor	29	260242	1	U-Bolt
12	261323	1	Reel Cover	31	262922	1	Main Shaft
13	S96-13	6	1/4-20 Nyloc Nut	32	601154-2	1	Hose Assembly
14	600056	1	Base Assembly	33	1-HS1004	1	Bumper Stop Assembly
15	S504240	1	Drive Spring Assembly	34	S260019	1	Guide Roller Pin Kit
16	261361	1	Spring Case Stud	35	600657	1	Hose Guide Assembly
17	600061-1	1	Spring Case Assembly	36	700228	1	Spray Valve
18	S47-66	1	3/8-16 x 1/2" Set Screw				

**Model Number: 24-601**

Hose I.D. and Length	3/8" x 35'
Reel Inlet Connection	3/8" NPT(F)
Max. Operating Pressure	250 PSI
Max. Operating Temperature	210 °F



Item #	Part #	# Req.	Description	Item #	Part #	# Req.	Description
1	500102-39	1	Case and Cover Assembly	19	S82-15	1	10-32 x 3/8" Nyloc Nut
2	300001	4	10-32 x 3/8" Screw	20	S400021	1	Latch Bumper
3	S600886	1	Swivel Assembly	21	S32-136	1	10-24 x 3/8" Screw
4	300031	1	1" Snap Ring	22	S400018	1	Latch Spring
5	300034	4	Spacing Washer	23	300002	7	10-32 x 1/2" Screw
6	S295-102	3	1/4-10 x 5/8" Hex Screw	24	S400012	1	Latch Bushing
7	260022-39	1	Sheave Flange	25	400020	7	O-ring
8	500006-39	1	Sheave Disk	26	S400109	1	Latch Plate Assembly
9	S500019	1	Latch Cam	27	300035	1	10-32 x 1" Mach. Screw
10	S260648	1	Spring Arbor	28	3-117440	1	Hose Clamp
11	500004-39	1	Reel Cover	30	S400015	1	Main Shaft
12	300070	4	1/4-20 Nyloc Nut	31	601154-1	1	Hose Assembly
13	500101-39	1	Base Assembly	32	1-HR1004	1	Bumper Stop
14	504240	1	Drive Spring Assembly	33	S260019	1	Guide Roller Pin Kit
15	S261360	1	Spring Case Stud	34	HR2012-39	1	Hose Guide Assembly
16	500103-39	1	Spring Case Assembly	35	261650-1	2	1/4-20 Nyloc Nut
17	300006	1	3/8-16 x 1/2" Set Screw	36	700228	1	Spray Valve
18	S300011	7	10-32 Hex Lock Nut				