

Steam Table Pan Accessorizes [Adapters, Bain Maries, Etc.]

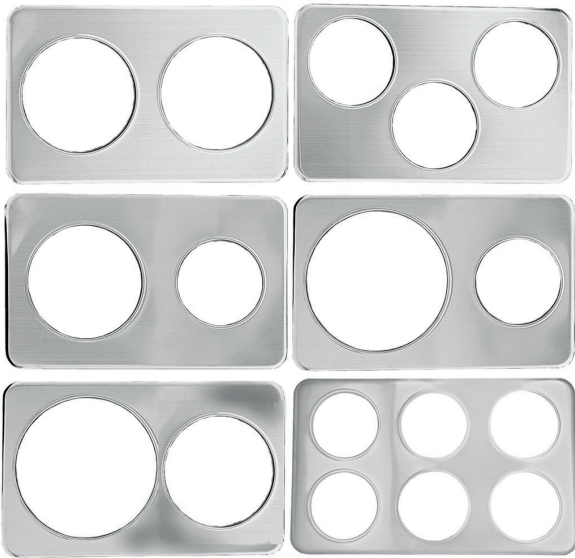
We Make it Easy to Adapt



Angled Adapter

- Mirror-polish stainless steel
- Enhanced presentation
- More efficient serving

ITEM	DESCRIPTION	CASE
AA-SS	Single Side, 20 ⁷ / ₈ " L x 12 ⁷ / ₈ " W x 3 ¹ / ₄ " H	2



Adapter Plates [Stainless Steel]

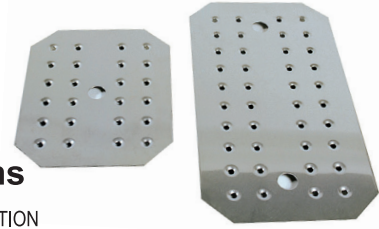
- Wrap around style with feet

ITEM	CONFIGURATION	DIMENSIONS	CASE
AP-27D	Two 8 ³ / ₈ " Holes	21" x 13"	10
AP-34D	Three 6 ³ / ₈ " Holes	21" x 13"	10
AP-47D	One 6 ³ / ₈ " & One 8 ³ / ₈ " Hole	21" x 13"	10
AP-62D	Six 4 ³ / ₄ " Holes	21" x 13"	10
AP-411D	One 6 ³ / ₈ " & One 10 ³ / ₈ " Hole	21" x 13"	10
AP-711D	One 8 ³ / ₈ " & One 10 ³ / ₈ " Hole	21" x 13"	10



Adapter Bars

ITEM	DESCRIPTION	CASE
AB-12N	12" - Stainless Steel	10
AB-20N	20" - Stainless Steel	10



False Bottoms

ITEM	DESCRIPTION	CASE
FB-50	Stainless Steel - Half Size	10
FB-100	Stainless Steel - Full Size	10



Bains Marie and Covers [Stainless Steel]

ITEM	DESCRIPTION	HEIGHT x DIAMETER	CASE
BM-125	1 ¹ / ₄ Qt.	6" x 5 ¹ / ₈ "	6
BM-200	2 Qt.	6 ⁷ / ₈ " x 5 ⁵ / ₈ "	6
BM-350	3 ¹ / ₂ Qt.	7 ¹ / ₈ " x 7 ¹ / ₈ "	6
BM-425	4 ¹ / ₄ Qt.	7 ³ / ₄ " x 7 ¹ / ₂ "	6
BM-600	6 Qt.	8 ⁷ / ₈ " x 8"	6
BM-825	8 ¹ / ₄ Qt.	9 ⁵ / ₈ " x 9"	6
BMC-125	1 ¹ / ₄ Qt. Cover		12
BMC-200	2 Qt. Cover		12
BMC-350	3 ¹ / ₂ Qt. Cover		12
BMC-425	4 ¹ / ₄ Qt. Cover		12
BMC-600	6 Qt. Cover		12
BMC-825	8 ¹ / ₄ Qt. Cover		12



Vegetable Inset Pans & Covers [Stainless Steel]

ITEM	DESCRIPTION	HEIGHT x INNER DIAMETER	CASE
IS-25	2 ¹ / ₂ Qt.	7 ⁷ / ₈ " x 4 ³ / ₄ "	6
IS-40	4 Qt.	8 ¹ / ₄ " x 6 ¹ / ₂ "	6
IS-70	7 Qt.	8 ¹ / ₄ " x 4 ¹ / ₄ "	6
IS-110	11 Qt.	8 ³ / ₄ " x 10 ¹ / ₁₆ "	6
ISC-25	2 ¹ / ₂ Qt. Cover		6
ISC-40	4 Qt. Cover		6
ISHC-40	4 Qt. Hinged Cover		6
ISC-70	7 Qt. Cover		6
ISHC-70	7 Qt. Hinged Cover		6
ISC-110	11 Qt. Cover		6
ISHC-110	11 Qt., Hinged Cover		6