



DIRECT STEAM FULL JACKET 80 GALLON KETTLE



OPERATION SHALL BE BY:

Direct steam at a minimum of 5 PSI (34 KpA) and a maximum of 25 psi (172 kPa) is required.

MODEL	CAPACITY	
	KDLS-80F	80 Gallon
KDPS-80F	80 Gallon	303 Liter

OPTIONS & ACCESSORIES AT ADDITIONAL COST

- 35 psi (241 kPa) high pressure operation for higher cooking temperature (HP-35)
- 3" (76 mm) draw-off valve (TVS-3)
- Etched gallon markings (GM-80F)
- Etched litre markings (LM-80F)
- Correctional package
- Pressure reducing valve (PRV-2)
- Triple basket assembly (TBA- 80F))
- Steam trap assembly, consisting of steam trap, steam control valve, check valve and line strainer (STA-1)
- Solid disc for draw-off valve (TSS-)
- Strainer hook (SH)
- Contoured measuring strip (CMS-)
- Draw-off valve hose kit with 8' (2.44m) hose (DVHK-)
- Single pantry faucet with 12" (305mm) swing spout (SF-12)
- Double pantry faucet with 12" (305mm) swing spout (DF-12)
- Single pantry kettle filler (SP-KF)
- Double pantry kettle filler (DP-KF)
- Kettle heat shield (KHS-)

STANDARD CONSTRUCTION SPECIFICATIONS

Southbend Steam model KDLS-80F or KDPS-80P, direct steam connected full jacket quad leg or pedestal kettle. Convenience features shall include a 2" (50 mm) sanitary draw-off valve with perforated strainer and a hinged flat split stainless steel cover.

A double wall kettle interior shall form a steam jacket around the kettle. Faucet bracket standard.

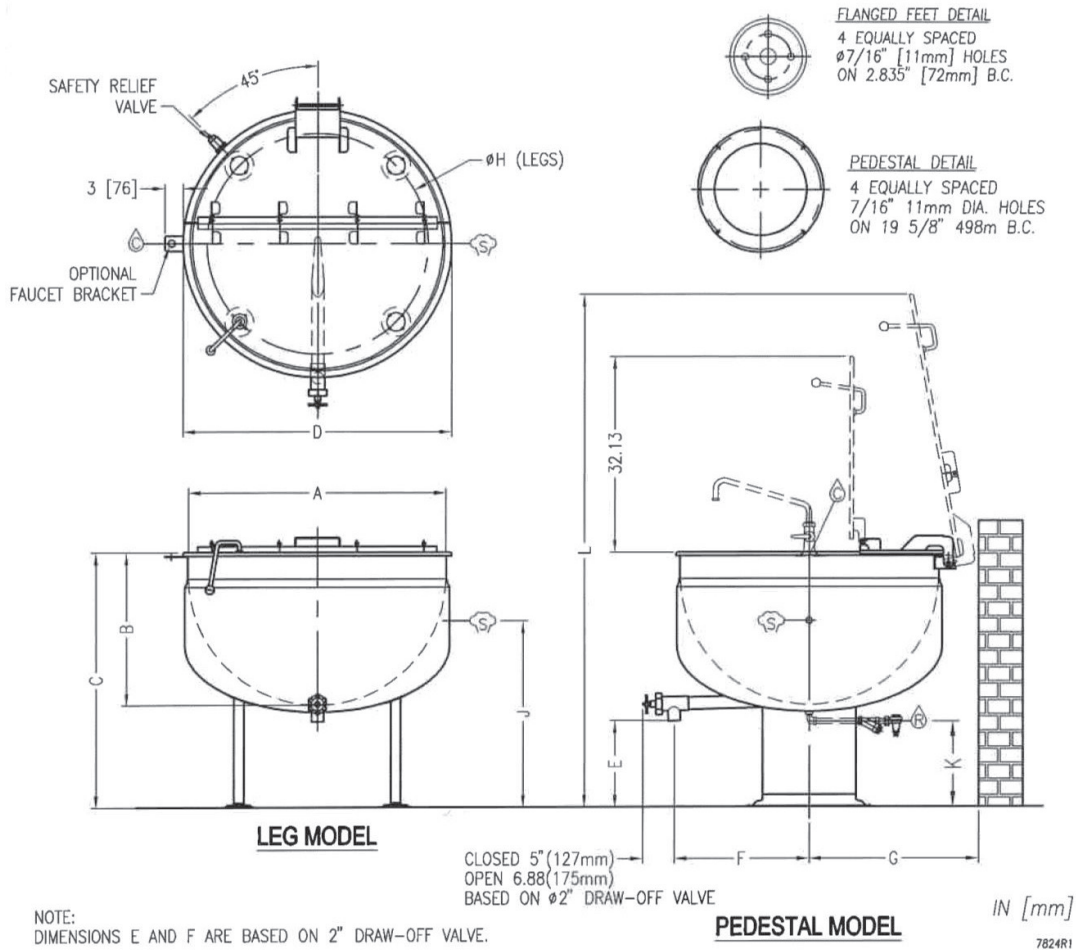
The bottom of the kettle shall be of hemispherical design for superior heat circulation. The DL-80F kettle shall be mounted on four stainless steel tubular legs. Each leg shall be fitted with a 4 hole adjustable flanged foot for securing to the floor.

Construction shall be all welded satin finish stainless steel type 304. The DP 80F kettle shall be mounted on a pedestal base and shall have four 7/16" (11mm) holes evenly spaced for securing the unit to the floor.

The kettle interior shall be stainless steel type 316.



Approval Notes: _____



SERVICE CONNECTIONS

- STEAM SUPPLY: 3/4" IPS (19 mm)
- CONDENSATE RETURN: 1/2" IPS (13 mm)
- COLD WATER: 3/8" (10 mm) tubing to faucet (optional)

DIMENSIONS

MODEL	CAPACITY	UNITS	A	B	C	D	E	F	G	H	J	K	L
KDLS-80F	80 gallons	in	42"	23.75"	40.5"	43.88"	14.13"	22"	27.5"	36.13"	35.5"	14"	82.88"
KDPS-80F	(303 liters)	(mm)	(1067)	(603)	(1029)	(1114)	(359)	(559)	(699)	(918)	(902)	(356)	(2105)
										NONE			

SPECIFICATIONS

MODEL	SHIPPING WEIGHT	MINIMUM CLEARANCE	
KDLS-80F	380 lbs. [172 kg]	SIDES BACK	3 [76]
KDPS-80F	380 lbs. [172 kg]		.5 [13]

**INTENDED FOR COMMERCIAL USE ONLY.
NOT FOR HOUSEHOLD USE.**

