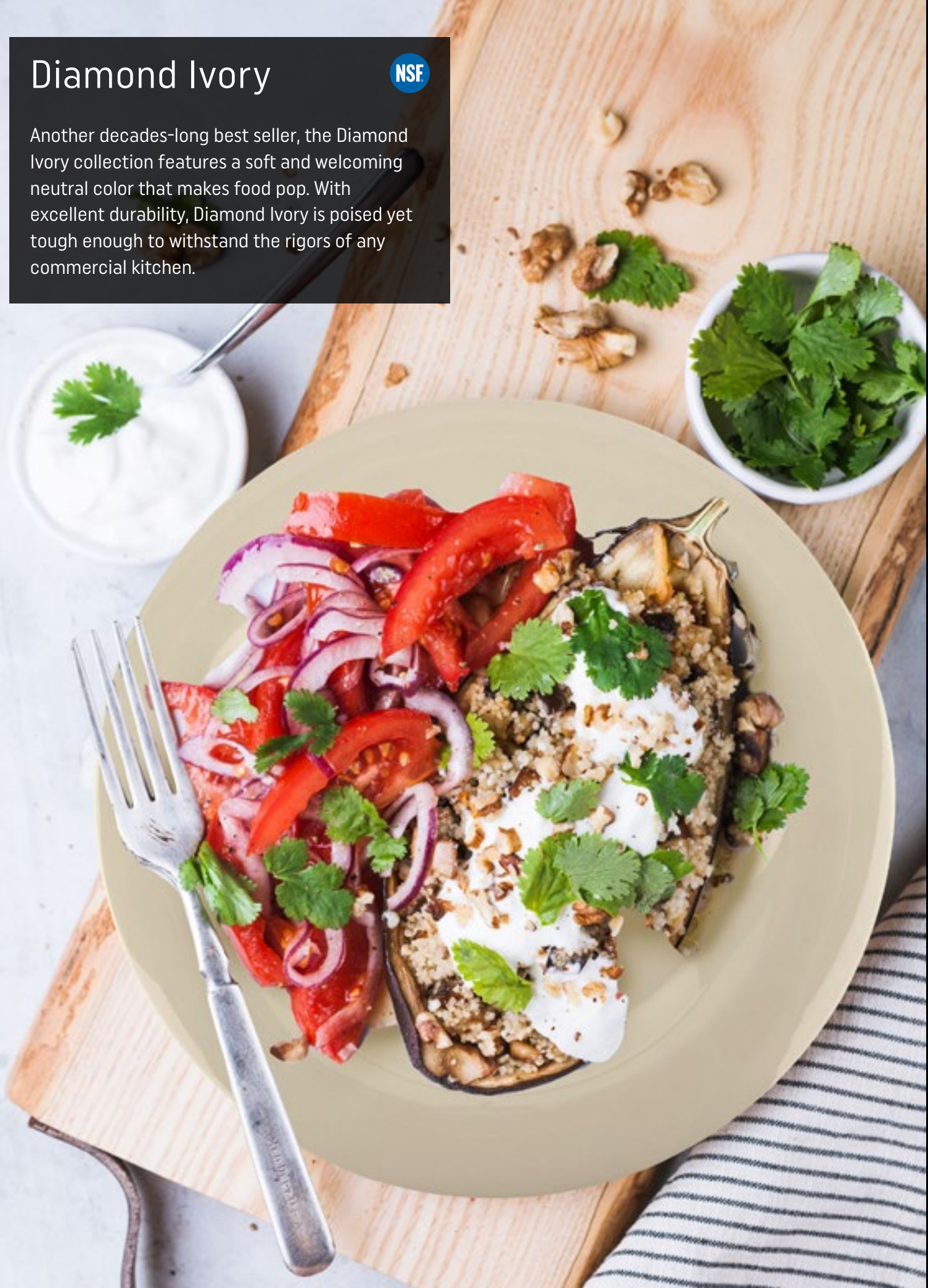


Diamond Ivory

NSF

Another decades-long best seller, the Diamond Ivory collection features a soft and welcoming neutral color that makes food pop. With excellent durability, Diamond Ivory is poised yet tough enough to withstand the rigors of any commercial kitchen.





WP-5-DI Wide Rim Plate 5.5" 4 dz.
WP-6-DI Wide Rim Plate 6.5" 4 dz.
WP-7-DI Wide Rim Plate 7.5" 4 dz.
***WP-9-DI** Wide Rim Plate 9" 2 dz.
***WP-10-DI** Wide Rim Plate 10.5" 1 dz.
***WP-12-DI** Wide Rim Plate 12" 1 dz.
B-139-DI Wide Rim Bowl 13 oz., 9.25" dia., 1.25" H 2 dz.
B-1611-DI Pasta Bowl 16 oz., 11.25" dia., 1.75" H 1 dz.
B-2412-DI Pasta Bowl 24 oz., 12.5" dia., 2" H 1 dz.



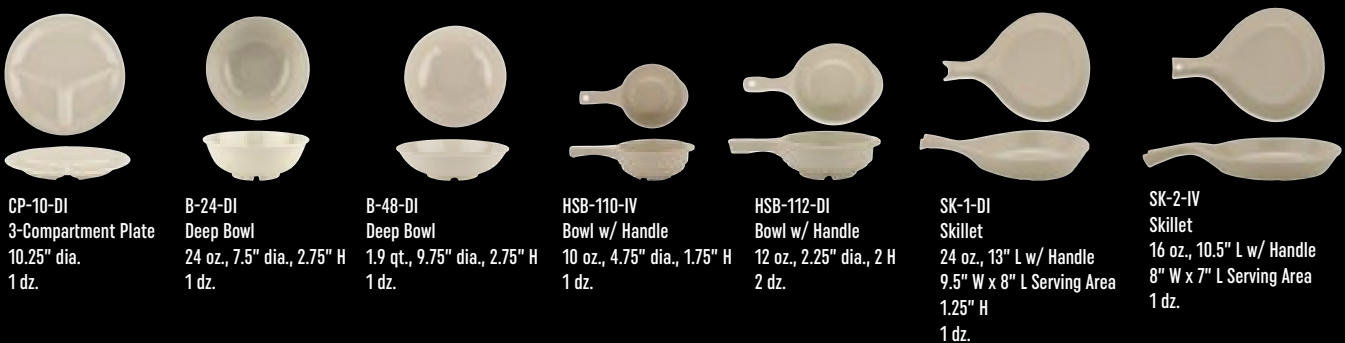
NP-6-DI Narrow Rim Plate 6.5" 4 dz.
NP-7-DI Narrow Rim Plate 7.25" 4 dz.
NP-9-DI Narrow Rim Plate 9" 2 dz.
NP-10-DI Narrow Rim Plate 10.5" 1 dz.
B-454-DI Narrow Rim Bowl 4.5 oz. 4.75" dia., 1.25" H 4 dz.
B-86-DI Narrow Rim Bowl 8 oz. 6" dia., 1.5" H 4 dz.
B-105-DI Narrow Rim Deep Bowl 10 oz., 5.5" dia., 2.25" H 4 dz.
B-127-DI Narrow Rim Bowl 12 oz. 7.25" dia., 1.75" H 2 dz.
B-167-DI Narrow Rim Bowl 16 oz. 7.5" dia., 1.74" H 2 dz.



OP-950-DI Oval Platter 9.75" L x 7.25" H 2 dz.
OP-120-DI Oval Platter 12" L x 9" H 1 dz.
OP-135-DI Oval Platter 13.5" L x 10.25" H 1 dz.
OP-145-DI Oval Platter with Handle 14.75" L x 10.5" H 1 dz.
***TP-12-DI** Triangle Plate 12" 1 dz.
OP-215-IV Narrow Oval Platter 11.5" L x 8" H 2 dz.
OP-320-IV Narrow Oval Platter 11.25" L x 8.5" H 1 dz.



BC-70-DI Rimless Bouillon Bowl 7 oz., 4" dia., 2" H 4 dz.
BC-170-DI Stacking Bouillon Bowl 8 oz., 4.5" dia., 2.25" H 4 dz.
B-45-DI Rimless Bowl 10 oz. 4.5" dia., 2.25" H 2 dz.
B-525-DI Rimless Bowl 16 oz. 5.25" dia., 2.5" H 2 dz.
B-925-DI Shallow Bowl 1.1 qt. 9" dia., 1.75" H 1 dz.
B-875-DI Shallow Rimless Bowl 27.9 oz. 8.5" dia., 1.5" H 1 dz.
B-49-DI Large Coupe Bowl 1.9 qt. 9" dia., 2.5" H 1 dz.



CP-10-DI 3-Compartment Plate 10.25" dia. 1 dz.
B-24-DI Deep Bowl 24 oz., 7.5" dia., 2.75" H 1 dz.
B-48-DI Deep Bowl 1.9 qt., 9.75" dia., 2.75" H 1 dz.
HSB-110-IV Bowl w/ Handle 10 oz., 4.75" dia., 1.75" H 1 dz.
HSB-112-DI Bowl w/ Handle 12 oz., 2.25" dia., 2 H 2 dz.
SK-1-DI Skillet 24 oz., 13" L w/ Handle 9.5" W x 8" L Serving Area 1.25" H 1 dz.
SK-2-IV Skillet 16 oz., 10.5" L w/ Handle 8" W x 7" L Serving Area 1 dz.