



PREP STATIONS

RAISED RAIL TRADITIONAL NARROW MODELS RP-CR-N

Self-contained refrigerator storage unit with mechanically cooled raised rail. Cold-wall cooled low profile raised rail w/ recessed pan ledge provides easy reach with conductive cooling above pans for optimal temperatures. Separate base and rail controllers give the operator precise control of the rail temperature and the ability to shut the rail off at night-conserves up to 60% of the daytime energy usage. Raised rail is standard with clean-out valve allowing pan opening to be easily cleaned and sanitized.

SHORT FORM SPEC: Randell RP-CR-N series model preparation table with natural R290 refrigeration system. Includes independently controlled mechanically cooled rail and refrigerated base, each controlled by their own electronic control. Single opening, raised rail to come standard with recessed pan ledge and oversized clean-out valve for efficient clean-ability. Base interior ends and door openings shall be high impact ABS plastic and be cooled with a blower coil with LED lighting located behind the mullion. Base cabinet doors to have recessed handles, press-fit magnetic gaskets and include self-closing heavy duty hinges. Unit to be shipped on standard 6" casters (front locking).

AVAILABLE MODELS:

COMPRESSOR RIGHT:

RP48CRR-N12
RP60CRR-N16
RP68CRR-N18
RP83CRR-N22
RP95CRR-N26
RP111CRR-N30

COMPRESSOR LEFT:

RP48CRL-N12
RP60CRL-N16
RP68CRL-N18
RP83CRL-N22
RP95CRL-N26
RP111CRL-N30

STANDARD FEATURES:

- R290 hydrocarbon refrigerant
- Cold-wall conductive cooling
- Recessed pan-ledge ensures cold above the pans
- Independent electronic temperature control for rail and base allows precise temperature maintenance in each zone
- Rail on/off allows nightly shutdown for up to 60% energy savings
- Exclusive completely sealed pan rail interior with clean-out valve
- Hinged compressor compartment panel for access to clean-out valve and condenser coil cleaning
- Interior LED lighting inside the base cabinet
- 6" casters

REFRIGERATION SYSTEM: All models will utilize state of the art, energy efficient R290 compressor systems with (0) ozone depletion (ODP) and (3) global warming potential. One and two door models utilize a single compressor system while three and four door models have a dual compressor system, each maximizing performance and efficiency. The pan rail is conductively cooled by cold-wall wrapped tank utilizing Randell's exclusive aluminum cold transfer plates to maximize heat removal capacity. Independently controlled rail and base temperatures are managed by electronic controllers metered using capillary tube systems. Independent rail control (separate from the base cabinet temperature control) allows the operator precise control of the rail and the ability to shut the rail off at night for energy savings up to 60% of the daytime usage. Independent base control allows precise control of the base cabinet.

CABINET BASE INTERIOR: The unit top is one-piece construction non-magnetic stainless steel to create a 15" wide work surface with 4" tall (front) raised pan rail for ergonomically friendly separation of the fresh food and prep area. The completely sealed water tight pan rail liner constructed of non-magnetic smooth finish stainless steel with an integral recessed pan ledge includes standard oversized clean-out valve (located in compressor compartment) makes for easy clean-up. Exterior fronts and ends are stainless steel for long lasting and easy to care for benefit. The interior floor and rear wall are anodized aluminum for easy care and long life. The interior sidewalls and door openings are thermoformed high-impact ABS to create cleanable corners and surfaces. One epoxy coated heavy-duty shelf provided as standard behind each door and are supported by heavy-duty metal supports.

DOORS & COVERS: Doors have a stainless steel exterior with ergonomic flush/top mounted door handles. The interior of the door(s) are thermoformed high-impact ABS to create cleanable corners and surfaces while providing extra depth and insulation value. Door (and optional Drawers) gaskets are press-fit magnetic type assuring positive and efficient seals and easy replacement (less than 10 seconds, no tools) for the operator. Pan rail covers constructed of stainless steel and are lightweight and ergonomically friendly to use.



PROJECT NAME:	
LOCATION:	
ITEM NO:	
QTY:	
MODEL NO:	
AIA NO:	
SIS NO:	
CSI SECTION:	11400



RP 68CRR-N18, shown with optional poly cutting board

OPTIONS/ACCESSORIES:

- Extra shelves
- Two-tier drawers (6"D pan capacity)
- Triple-tier drawers (4"D pan capacity)
- Tray racks for 18"x26" sheet pans (24" & 27" doors only)
- Stainless steel finished back
- 6" adjustable legs (for 35"-37"H work-surface)
- 4" casters (for 33"H work-surface)
- Hood cover with slide-back front
- See-through hinged cover
- Slide-back hinged cover
- White poly cutting board, 1/2" thick (19"D)
- White poly cutting board, 1/2" or 3/4" thick (16"D)
- Richlite cutting board, 1/2" or 3/4" thick (16"D), extended depth available (consult factory)
- Wire prep racks (for placement on stainless steel surface)
- Built-in prep racks with catch pans
- Single over-shelf, cantilever type
- Double over-shelf, cantilever type
- 220-230V/50-60Hz supplied with cord (plug provided in field by others)
- Extended rail storage
- Remote monitoring (WiFi)

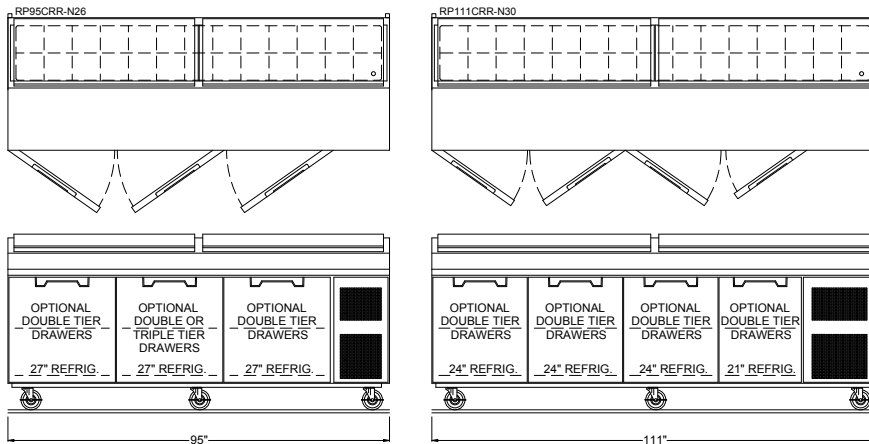
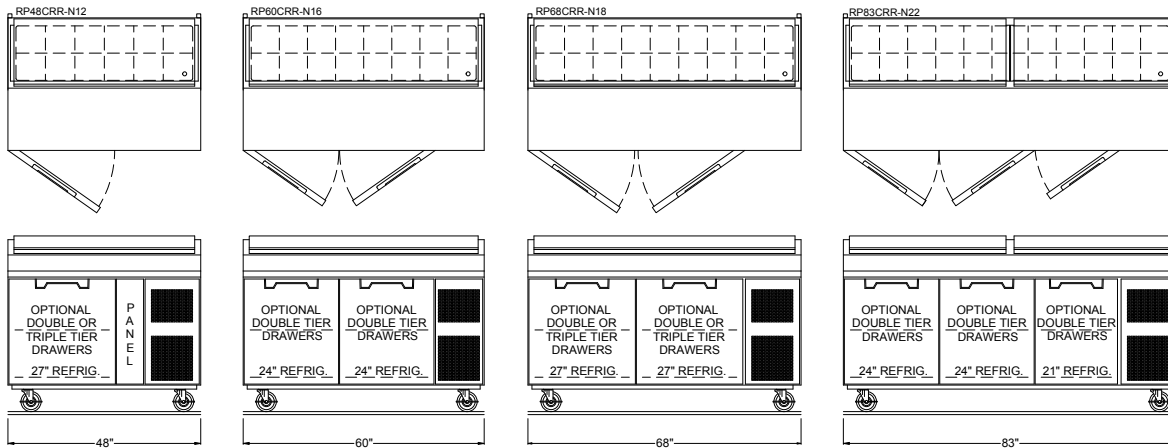
ADDITIONAL RESOURCES:

[Request A Quote](#)

[Sales Tools](#)

[Find A Rep](#)

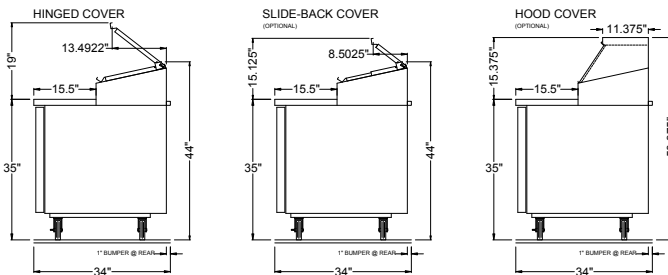
[KCL AutoCAD/Revit](#)



DOOR OPENING SIZE - INTERIOR DEPTH

Door Width	Clearance (Lt to Rt)	Clearance (Tp to Btm)	Interior depth behind door
21"	16"	22.25"	26"
24"	19"	22.25"	26"
27"	22"	22.25"	26"

Compressor Left models RP-CRL-N models are mirrored version of RP-CRR-N models



Model	Pan Capacity 1/6 Size	L	D	H			Doors	Storage Cu. Ft.	HP	Volt	Amps	NEMA	Ship Wt.
				Work Surface	Rear of Unit (Closed Cover)	Overall (Cover Open)							
RP48CRx-N12	12	48"	33"	35"	44"	54"	(1)27"	9.0	1/3	115/60/1	6.7	5-15P	405
RP60CRx-N16	16	60"	33"	35"	44"	54"	(2)24"	14.67	1/3	115/60/1	6.7	5-15P	459
RP68CRx-N18	18	68"	33"	35"	44"	54"	(2)27"	17.76	1/3	115/60/1	6.7	5-15P	484
RP83CRx-N22	22	83"	33"	35"	44"	54"	(2)24", (1)21"	23.55	(2) 1/4	115/60/1	6.7	5-15P	575
RP95CRx-N26	26	95"	33"	35"	44"	54"	(3)27"	28.18	(2) 1/4	115/60/1	6.7	5-15P	614
RP111CRx-N30	30	111"	33"	35"	44"	54"	(3)24", (1)21"	32.81	(2) 1/4	115/60/1	6.7	5-15P	751

OPTIONAL ACCESSORIES:



See-Thru Covers



Pull-Out Shelves



Pizza Preparation Racks
With Pull-Out Catch Pans



Drawers



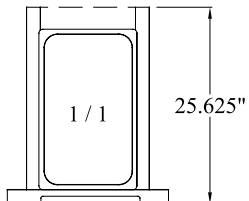
Removable Pan Slides



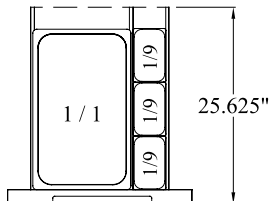
Hood Style Cover

OPTIONAL DRAWERS:

21" Drawer:



24" Drawer:



27" Drawer:

