



Bread & Baguette Pans



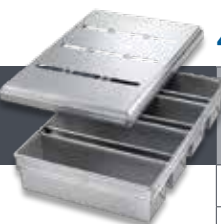
Single Pullman Pans/Covers Aluminized steel, folded construction

Item #	In Stock	Coating	Description	Individual Pan Size (in)			Weight Each (lb)	Loaf Weight Each (lb)	Overall Size (in)
				Top Inside	Btm. Out.	Depth			
44615	★	Glazed	26 gauge, wire in rim	13 x 4	12 ³ / ₄ x 3 ³ / ₄	4	1.8	1.5	13 ¹⁴ / ₂₅ x 4 ¹⁴ / ₂₅
44660	★	Glazed	Individual sliding cover for #44615	—	—	—	0.6	—	14 ⁹ / ₁₆ x 4 ³ / ₄
44650	★	Glazed	26 gauge, wire in rim	16 x 4	15 ³ / ₄ x 3 ³ / ₄	4	2.1	2.0	16 ⁵ / ₈ x 4 ⁵ / ₈
44655	★	Glazed	Individual sliding cover for #44650	—	—	—	0.7	—	17 ³ / ₈ x 4 ⁵ / ₈



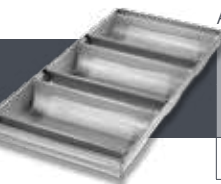
3-Strap Pullman Pans/Covers Aluminized steel, folded construction, band over wire

Item #	In Stock	Coating	Description	Individual Pan Size (in)			Weight Each (lb)	Loaf Weight Each (lb)	Overall Size (in)
				Top Inside	Btm. Out.	Depth			
10367	★	Glazed	26 gauge, wire in rim	12 x 4	11 ³ / ₄ x 3 ³ / ₄	4	7.5	1.5	12 ³ / ₄ x 15 ³ / ₄
10471	★	Glazed	1" non-nesting, drop cover for #10367	—	—	—	6.3	—	13 ³ / ₄ x 16 ³ / ₄
44635	★	Glazed	26 gauge, wire in rim	13 x 4	12 ³ / ₄ x 3 ³ / ₄	4	7.3	1.5	13 ²³ / ₃₂ x 15 ⁵ / ₈
44645	★	Glazed	1" non-nesting, drop cover for #44635	—	—	—	4.3	—	14 ³ / ₈ x 16 ⁹ / ₃₂
44365	★	Glazed	26 gauge, wire in rim	16 x 4	15 ³ / ₄ x 3 ³ / ₄	4	8.5	2.0	16 ³ / ₄ x 15 ³ / ₄
46465	★	Glazed	1" non-nesting, drop cover for #44365	—	—	—	5.3	—	17 ³ / ₈ x 16 ¹³ / ₃₂
10369	★	Glazed	26 gauge, wire in rim	16 x 4 ¹ / ₂	15 ³ / ₄ x 4 ¹ / ₄	4 ¹ / ₂	10.0	2.1	16 ³ / ₄ x 17
16083	★	Glazed	1" non-nesting, drop cover for #10369	—	—	—	6.2	—	17 ³ / ₄ x 18



4-Strap Pullman Pan/Cover Aluminized steel, folded construction, band over wire

Item #	In Stock	Coating	Description	Individual Pan Size (in)			Weight Each (lb)	Loaf Weight Each (lb)	Overall Size (in)
				Top Inside	Btm. Out.	Depth			
44685	★	Glazed	26 gauge, wire in rim	13 x 4	12 ³ / ₄ x 3 ³ / ₄	4	9.5	1.5	13 ³ / ₄ x 21 ³ / ₈
44695	★	Glazed	1 ¹ / ₂ " nested cover for #44685	—	—	—	6.3	—	14 ³ / ₄ x 22 ³ / ₈



3-Strap Hearth Bread Pan

Aluminized steel, seamless construction, band over wire, partial bottom and sidewall perforations, flat bottom

Item #	In Stock	Coating	Description	Individual Pan Size (in)			Weight Each (lb)	Loaf Weight Each (lb)	Overall Size (in)
				Top Inside	Btm. Out.	Depth			
44405	★	Glazed	22 gauge, wire in rim	11 ¹ / ₂ x 6	11 x 3 ¹ / ₂	2 ¹ / ₂	6.5	1.5	12 ³ / ₁₆ x 25 ⁷ / ₈



4-Strap Hearth Bread Pan

Aluminized steel, folded construction, band over wire, quilted corrugations, flat bottom with two rows of sidewall perforations

Item #	In Stock	Coating	Description	Individual Pan Size (in)			Weight Each (lb)	Loaf Weight Each (lb)	Overall Size (in)
				Top Inside	Btm. Out.	Depth			
41145	★	Glazed	22 gauge, wire in rim	11 ⁹ / ₁₆ x 5 ³ / ₄	10 ¹⁵ / ₁₆ x 3 ³ / ₄	2 ³ / ₄	7.8	1.5	12 ³ / ₈ x 26 ¹ / ₁₆