



CHEF-HOOD ACCESSORY



CHEF-62 shown with CHEF-HOOD2 and CHEF-HOODHEPA2 on CHEF-STAND62



SPECIFIER STATEMENT

CHEF-HOOD1 and CHEF-HOOD2 delivers high-efficiency extraction of fumes and vapors from both the chimney and oven door during cooking, for a comfortable working environment. Advanced condensation technology maximizes grease particle capture, helping maintain a cleaner kitchen.

Exterior Dimensions

CHEF-HOOD1	15.48"H x 33.78"W x 43.9"D
CHEF-HOOD2	15.48"H x 41.26"W x 49.85"D

Weight

CHEF-HOOD1	133 lbs. gross / 111 lbs. net
CHEF-HOOD2	217 lbs. gross / 161 lbs. net

Distances Above the Hood

19.69" recommended | 11.81" minimum

Project _____
 AIA # _____ SIS # _____
 Item # _____ Quantity _____ C.S.I. Section 114000

MODELS

- CHEF-HOOD1 (VACIC6&11HCE) for **half** size Chef'sCombi
- CHEF-HOOD2 (VACIC6&12HCE) for **full** size Chef'sCombi

STANDARD FEATURES

- **Advanced features:**
Equipped with two adjustable extraction speeds, the hood operates quietly and efficiently. It automatically starts at low speed when the Chef'sCombi oven is powered on, and switches to high speed when the oven door opens—ensuring rapid and effective vapor removal throughout the cooking process.
- **Integrated LED lighting:**
Bright, evenly distributed LED lighting provides excellent visibility during cooking.
- **Easy Maintenance**
Two removable, machine-washable shock filters make regular cleaning simple, helping maintain peak performance over time.
- **Flexible Installation**
Designed for quick and easy installation, the hood integrates seamlessly with Chef'sCombi ovens in both stacked and non-stacked configurations. Its adaptable design allows installation outside the footprint of a conventional hood, offering greater design flexibility. It can also be retrofitted, supporting versatile kitchen layouts.

ACCESSORIES

Choose one or both for use with CHEF-HOOD1:

- CHEF-HOODCF1 Carbon filter option (fumes)
- CHEF-HOODHEPA1 Hepa filter option (smells)

Choose one or both for use with CHEF-HOOD2:

- CHEF-HOODCF2 Carbon filter option (fumes)
- CHEF-HOODHEPA2 Hepa filter option (smells)

UTILITIES

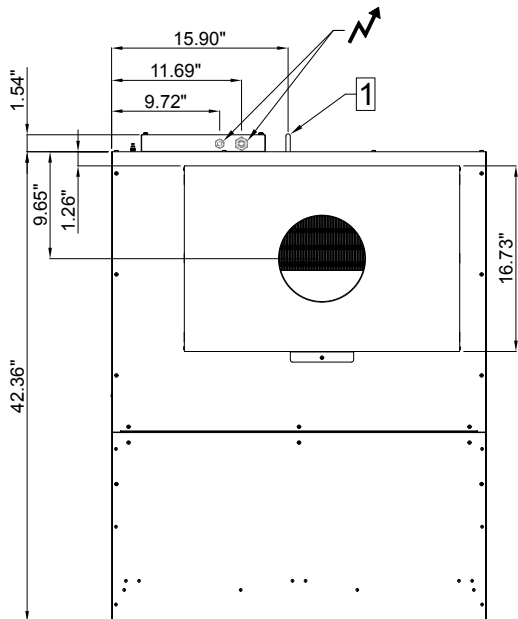
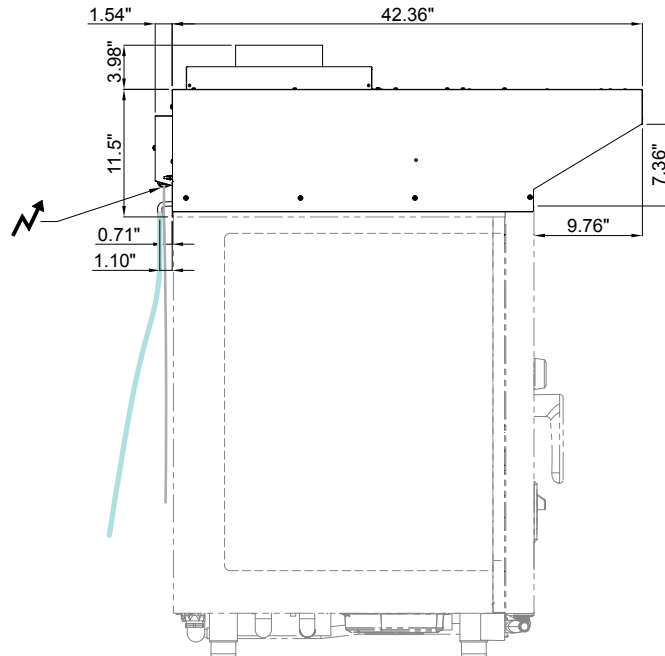
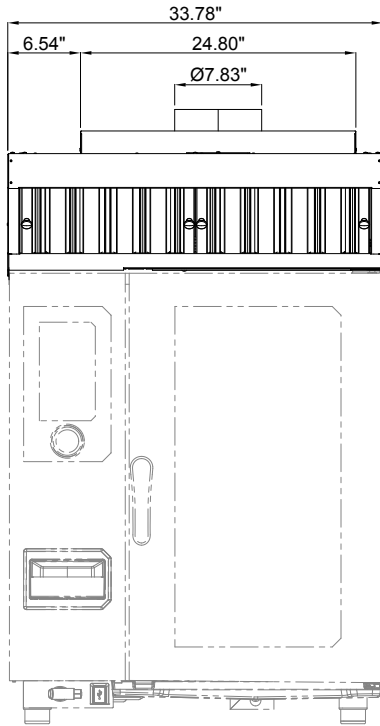
- **Electricity**
Single phase 120V+E – 60Hz / I. Max 1.7A / Total power 390W
- **Condensate Drainage**
Connection: Non-threaded elbow outlet diameter 0.47" + hose length 78.74"

CHEF-HOOD ACCESSORY

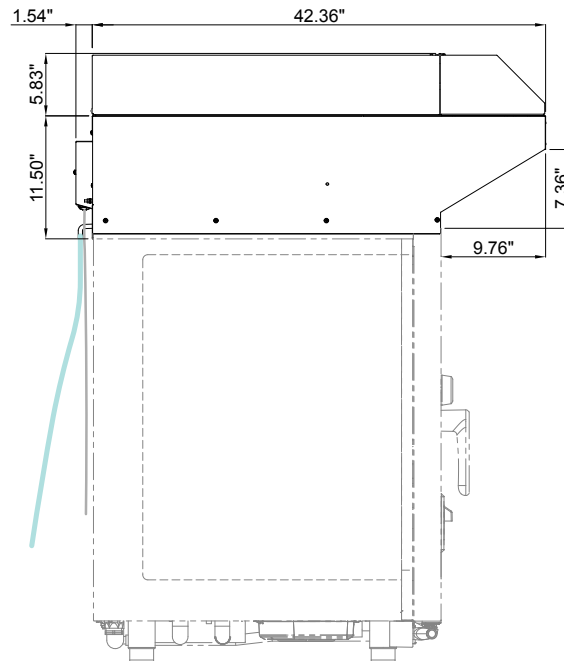
Approved by _____ Date _____ Approved by _____ Date _____

CHEF-HOOD1

Condensation Hood (for single or stacked half size combis)



CHEF-HOOD1 with Optional CHEF-HEPA1 filter



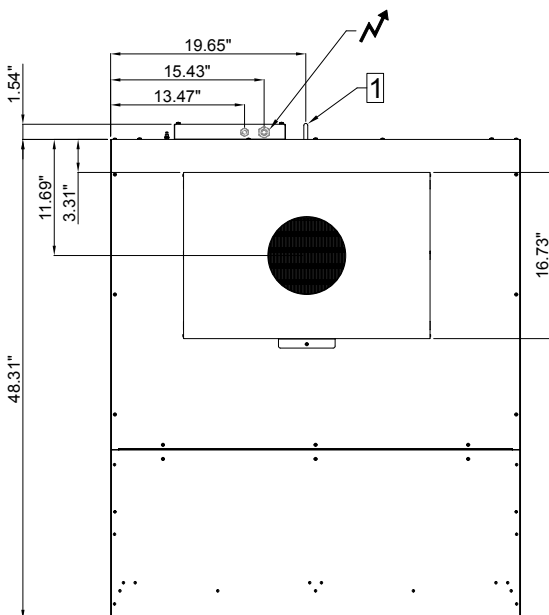
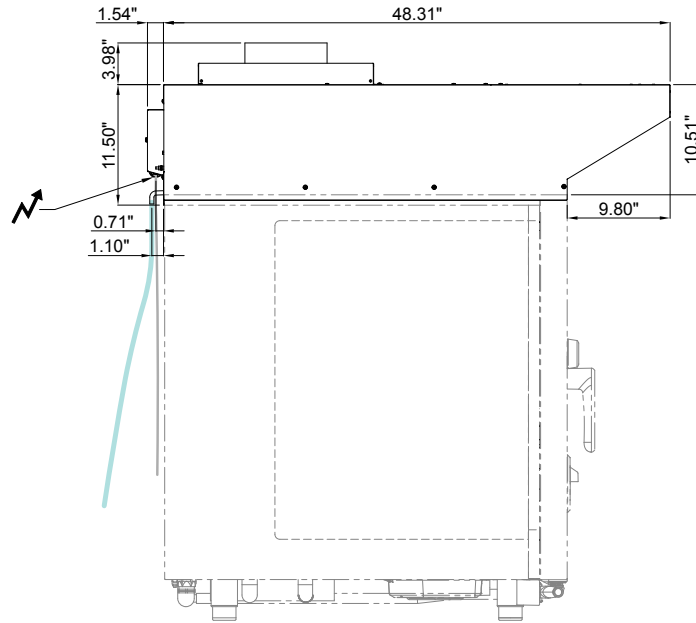
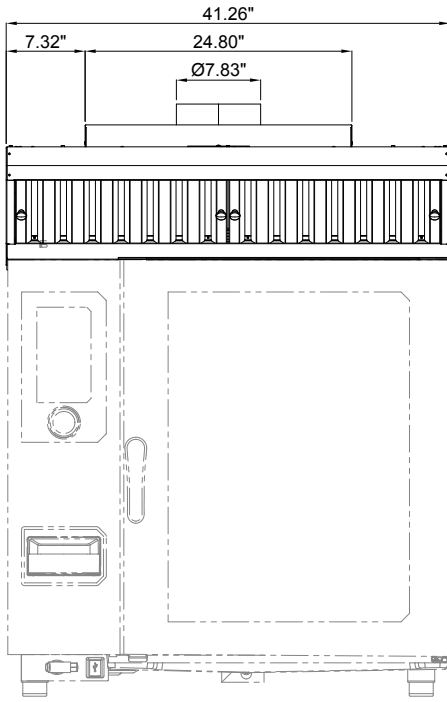
Important Installation Note:

The oven and hood must be installed in a naturally ventilated area or one equipped with an air exchange system that complies with current regulations.

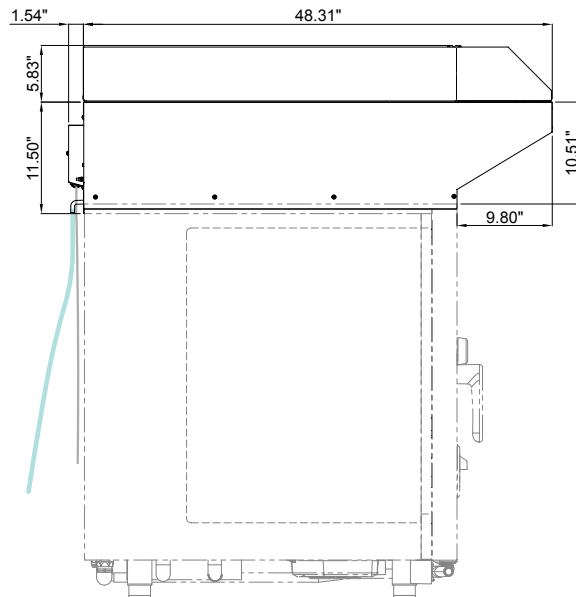
As continued product improvement is a policy of Vulcan, specifications are subject to change without notice.

CHEF-HOOD2

Condensation Hood (for single or stacked full size combis)



CHEF-HOOD2 with Optional CHEF-HEPA2 filter



Important Installation Note:

The oven and hood must be installed in a naturally ventilated area or one equipped with an air exchange system that complies with current regulations.

As continued product improvement is a policy of Vulcan, specifications are subject to change without notice.