

## Chef'sCombi **V4.0.5** Software Update 3/30/2026

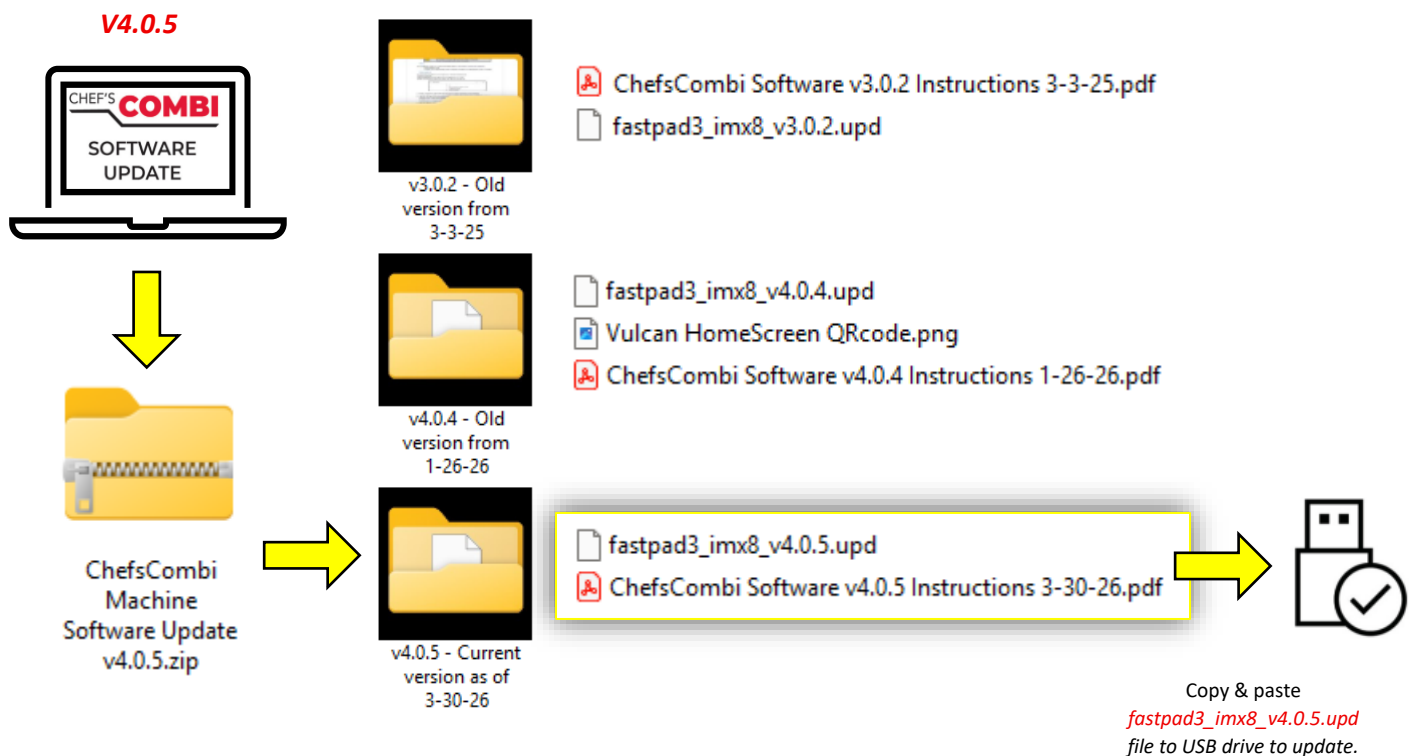
We are excited to announce the release of software version **v4.0.5**. This update resolves an E23 prompt during cleaning initialization and includes an improvement of steam production during preheat. This update can be installed on any unit running v4.0.4. Updating can prevent unnecessary downtime and is strongly encouraged. All software updates are free. Customers can download software and copy to a USB thumb drive to perform.

Software updates ensure users and service technicians benefit from the latest developments and performance improvements. Once the update process begins, do not remove the USB drive or power off the unit. The update should only take a few minutes to complete. A step-by-step video is viewable [here](#).

**Software Update Guide:** Download Software from ITWFEG [Webdam](#) or Vulcan website under resources.

One **.ZIP** file contains all downloadable software. Extract and use the correct version accordingly. Instructions and the software .upd file are inside of each folder. Check machine software version from "Settings" icon.

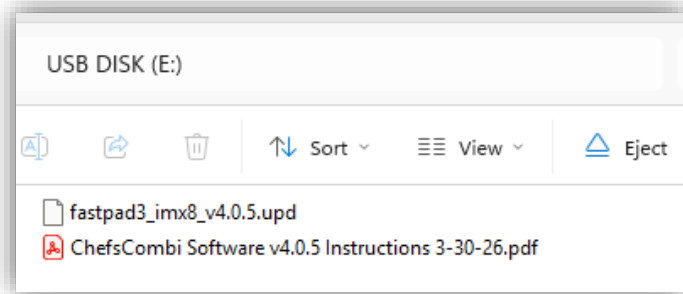
- If current machine software is **v3.0.0**, it is required to update to **v3.0.2** first.
- If current machine software is any version besides **v3.0.0**, proceed with updating to **v4.0.4**.
- If current machine software is **v4.0.4**, proceed with updating to **v4.0.5**.



**Software Download Information:**

1. Download Software **v4.0.5** from ITWFEG [Webdam](#) or Vulcan website under resources.
2. Verify your current machine software code is **v4.0.4** before updating (shown at bottom of "Settings" screen).
3. Only one software file on USB root menu at a time (See image example "fastpad3\_imx8\_v4.0.5.upd").
4. The Combi cannot open .ZIP files or folders. Open the downloaded .zip folder, extract/copy file to USB.
5. The USB thumb drive should be formatted in FAT32 or FAT and have a max capacity of 32GB
6. Follow machine update instructions. PDF instruction is included in the ZIP file and can be copied to USB.

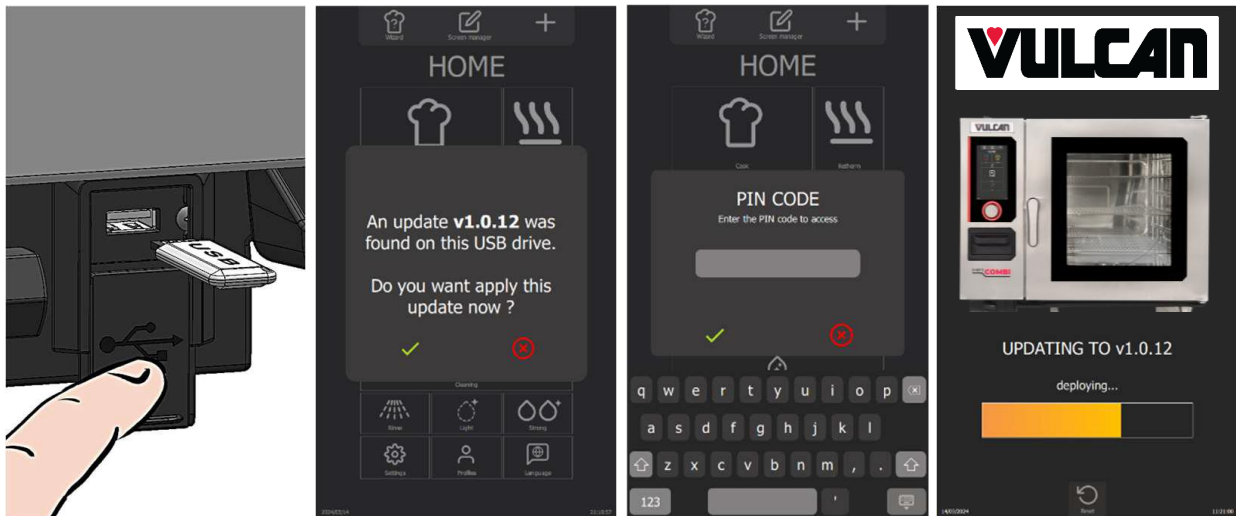
Example USB Drive with **V4.0.5** if current machine software is **v4.0.4**:



**Procedure to Update Combi:**

1. With the touch screen on the Home menu, insert the USB thumb drive containing the files above.
2. After USB key is connected, an "UPDATE" request window appears. If no window appears, the file is not saved correctly, software is already current, or there is a USB/thumb drive issue (try another USB or reset machine power by unplugging or reset breaker).
3. Confirm the update by pressing the "✓" icon. Enter PIN code 0000 and press the "✓" icon.
4. The software will deploy and restart after completion (about 1 minute).
5. Remove USB key only after the HOME screen appears. Verify in "Settings" Screen software v4.0.5.

*Example images for reference*



If Questions, Contact: [combi.tech@vulcanequipment.com](mailto:combi.tech@vulcanequipment.com) or 800-814-2028 and prompt #2 then #8