



STEAMERS

HYPLUS PRESSURELESS WITH GAS BOILER MODEL HY-10SG

Pressureless steamer with gas heated pressure boiler mounted in a cabinet base.



| | |
|---------------|-------|
| PROJECT NAME: | |
| LOCATION: | |
| ITEM NO: | |
| QTY: | |
| MODEL NO: | |
| AIA NO: | |
| SIS NO: | |
| CSI SECTION: | 11400 |



CONSTRUCTION: Steamer cavities and cabinet base are all stainless steel construction. Steamer unit has a unitized body, with removable lift-off panels providing access to internal components. Steamer doors are all stainless steel with a strong continuous hinge and are field-reversible for left or right swing. Doors are insulated and provided with a one-piece, replaceable seal. Easy-open handle and latch provides a positive lock and seal when door is pushed or slammed shut. Hidden magnetic door switch cuts power to blower and steam flow to that cavity, when the door is opened. Pan support racks are electro-polished stainless steel and removable for easy cleaning. Wide drip sink with condensate drain is positioned under cavity doors. Cabinet base has a stainless steel frame with all stainless steel top deck, removable lift-off panels standard. Front and rear legs have adjustable bullet feet. Flanged feet are an available option.

FINISH: Cabinet exterior, including doors, are finished to a #3 uniform finish. Cavity interiors are electro-polished stainless steel. Control panel face plates are smudge-resistant polyester film.

CONTROLS: Steamer cavity controls are mounted on the front panel for easy replacement or repair and include a separate ON-OFF 60-minute timer control with a constant steam setting, for each cavity. Gas boiler is provided with a gas control valve, power-ON switch, RESET light, start switch, low water sensor, pop safety valve, water level sight glass on front panel and outside cabinet-mounted pressure gauge.

PERFORMANCE FEATURES: Unit will shut off if water level is low or unit builds too much pressure. When power switch is turned "OFF," the boiler automatically drains to reduce sediment build-up, after water has cooled to 130°F. Each steamer cavity has a powerful side-mounted blower, which increases steam velocity and provides efficient steam distribution throughout cavity and between loaded pans. Boiler is constructed for 15 PSI maximum, 200,000 BTU/hr input per 2 1/2" deep steam pan capacity. Unit comes standard with electronic ignition.

CABINET BASE STEAM SOURCE: Unit has a gas-heated, cabinet-mounted pressure boiler to provide atmospheric steam to each chamber at a temperature of approximately 212°F. The 200,000 BTU generator delivers 3.7 boiler horsepower. Unit comes standard with electronic ignition.

PAN CAPACITY:

| Pan Size/Type | Per cavity | Total |
|------------------|------------|-------|
| 12 x 20 x 1" | 10 | 20 |
| 12 x 20 x 2-1/2" | 5 | 10 |
| 12 x 20 x 4" | 3 | 6 |

INSTALLATION: Unit requires gas service via 1/2" NPT pipe or approved equivalent. Specify type of gas. Unit requires two 1/2" NPT cold water supply line, 1 1/4" NPT free venting drain; and 115 volt, single phase, 60 cycle 15 AMP electric service, 4 AMP maximum load.

STEAM SOURCE FOR ADJACENT EQUIPMENT: A 1/2" NPT power take-off valve is standard on all gas units. To ensure proper performance boiler must be properly sized to meet boiler horsepower requirements of steamer cavities and additional equipment. Appropriate steam traps and piping must be professionally installed.

WATER QUALITY REQUIREMENTS:

| | |
|------------------------------|---------------------|
| Containment | Water Supply |
| pH | 7 to 9 |
| Total Dissolved Solids (TDS) | 30 to 60 ppm |
| Hardness | less than 60 ppm |
| Chlorine and Chloramine | less than .1 ppm |
| Chlorides | less than 30 ppm |
| Silica | less than 12 ppm |
| Undissolved Solids | less than 5 microns |

CONTINUED ON BACK...

OPTIONS/ACCESSORIES:

- Flanged Feet
- Independent Water Supply For Condensate Spray
- Single Water Connection

ADDITIONAL RESOURCES:

- Request A Quote
- Sales Tools
- Find A Rep

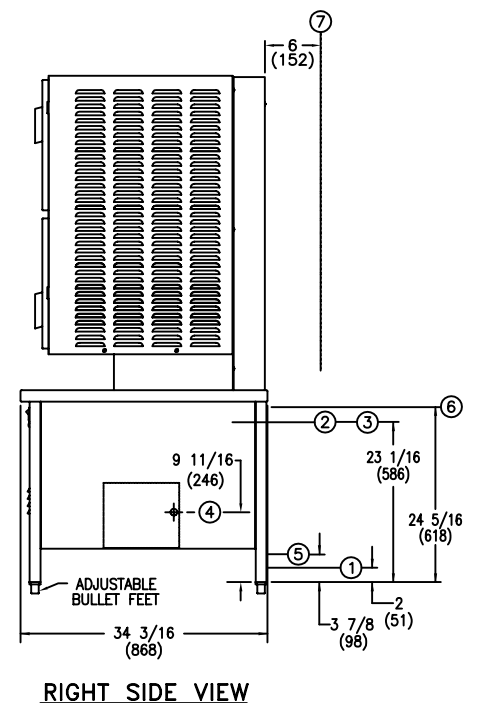
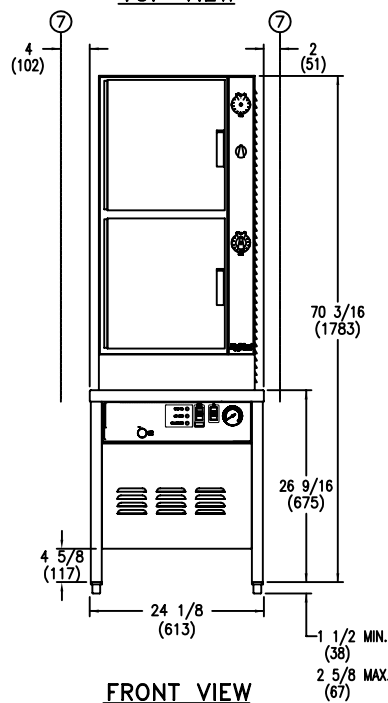
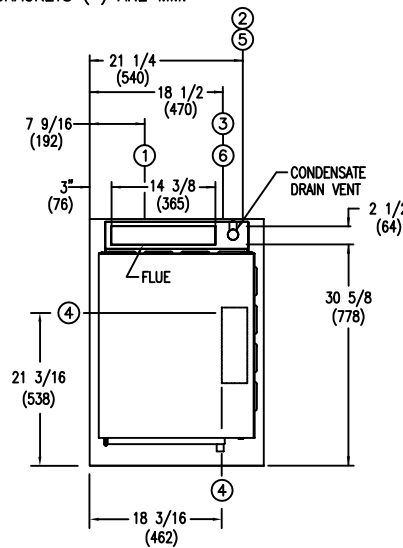
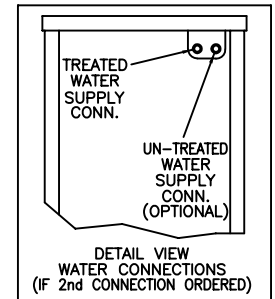
In order to accurately choose the correct water treatment solution, a water quality test has to be performed. If a "Free Start-up" is requested, the ASA will perform a water quality test and Groen will be able to suggest the best solution for your water quality. If it isn't, your local manufacturing representative can coordinate this for you.

After the "Free Start-up" is performed, Groen will add an additional 1-year parts and labor warranty. If Groen suggests a water treatment system, the system is purchased from Groen, installed and maintained, water related service issues will be covered for the duration of the warranty period.

SERVICE CONNECTIONS:

1. DRAIN CONNECTION: 1-1/4 NPT (INCLUDING AUTOMATIC & MANUAL STEAM GENERATORS, STEAMERS, & CONDENSATE SPRAY)
2. COLD WATER SUPPLY: 1/2 NPT (FOR BOILER & CONDENSATE SPRAY)
3. OPTION: SEPARATE CONDENSATE SPRAY 3/8 NPT (ADD KIT #MS102210)
4. ELECTRICAL CONNECTION: 7/8" DIA. HOLE (REF. 1/2" CONDUIT KNOCK-OUT)
5. GAS CONNECTION: 1/2 NPT
6. STEAM POWER TAKE-OFF: 1/2 NPT
7. MINIMUM CLEARANCE REQUIRED.
8. DIMENSIONS IN BRACKETS () ARE MM.

| | NATURAL GAS | PROPANE GAS |
|------------------------------------|-------------|-------------|
| GAS OPERATING PRESSURE | 3.5" W.C. | 10.0" W.C. |
| RECOMMENDED INCOMING GAS FEED RATE | 5"W.C. MIN | 11"W.C. MIN |
| | 14"W.C. MAX | 14"W.C. MAX |
| MAX. INPUT-BTU/HR | 200,000 | |
| MAX. OUTPUT-BTU/HR | 120,000 | |
| STEAM GENERATOR HORSEPOWER: 3.7 | | |
| *W.C.=WATER COLUMN | | |



P/N 170756 REV. A