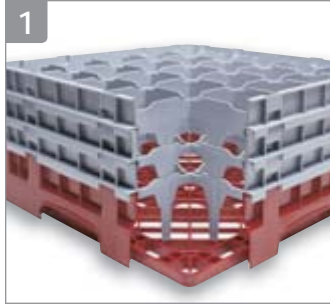


# CAMRACK® 4-IN-1 WAREWASHING SYSTEM

The Camrack System will protect glassware and keep it clean until the next event, eliminating the need for rewashing.

Camrack Cover Seals from the Top and Camdolly® Seals from the Bottom.

## Efficient Washing



Open inside compartments provide thorough circulation of water and cleaning solutions and promote quick and thorough drying.

Long-lasting polypropylene Camracks are built to withstand chemicals and high temperatures up to 200°F (93°C).

## Sanitary Storage



Closed outer walls keep fingers and contaminants out and reduce risk of breakage and injury. The Camrack Cover and Camdolly make this system completely enclosed. Glassware stays clean in storage, eliminating rewashing.

## Inventory Control



A variety of base rack colors help identify at a glance both contents and quantity per rack. Available in 10 colors.

## Safe, Sanitary Transportation



Camracks can be transported across large campuses or to off-site locations in one single unit.

Easy to grip handles and smooth overlapping sides facilitate safe handling.



Camracks interstack with racks from major manufacturers.



Content labeling options include one-color custom hot stamping or pre-printed clips.



Camracks are covered by one or more of the following patents: Full Base Dish Rack D 412,607. Half Base Dish Rack D 404,176. Half Dish Rack Extender D 400,321. Enlarged Dish Rack Extender D 399,614. Dish Rack with Extender 5,934,486 Utility Patent. Pronged Base Dish Rack D 403,472.

# CAMRACK® COMPONENT SYSTEM

The Camrack System offers several choices for ordering the right Camracks. Please consult with your sales representative or Cambro Customer Service for all special ordering and assembly directions.

## Choose Between:

1. A complete selection of pre-assembled, ready to use Camracks listed in our catalog; or
2. Custom built special order Camracks for specific needs; or
3. Individual Camrack components for distributors to stock and build racks as needed.

## Base Rack Colors:

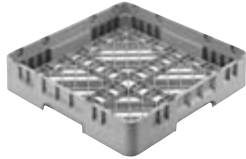
Sherwood Green (119), Soft Gray (151), Brown (167), Beige (184), Navy Blue (186), Cranberry (416), Black (110)\*, Red (163)\*, Blue (168)\*, Teal (414)\*.

**Base Cup Rack Color:** Soft Gray (151).

**Flatware Rack Color:** Soft Gray (151).

**Extender Color:** Soft Gray (151).

.....  
\*Full size only.  
.....



**BR** = Full Size Base Rack



**HBR** = Half Size Base Rack



**E1** = Full Size Full Drop Compartment Extender



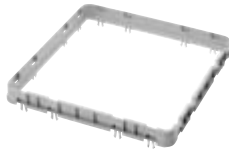
**HE1** = Half Size Full Drop Compartment Extender



**E2** = Full Size Half Drop Compartment Extender



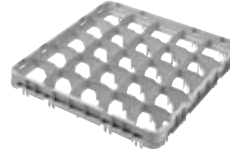
**HE2** = Half Size Half Drop Compartment Extender



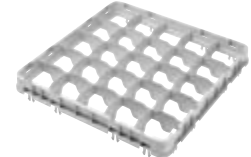
**E3** = Full Size Open Extender



**HE3** = Half Size Open Extender



**E4** = Full Size Full Drop Compartment Extender



**E5** = Full Size Half Drop Compartment Extender

## CAMRACK COMPONENTS

Only E3 extenders may be added to E4's and E5's.

CODE	DESCRIPTION	OVERALL DIMENSIONS	COMPARTMENT	INSIDE RACK HEIGHT	CASE PACK	LIST PRICE EA.
<b>Full Size Base Racks</b>						
BR258	Full base rack	19 <sup>3</sup> / <sub>4</sub> " x 19 <sup>3</sup> / <sub>4</sub> " x 4" (500 x 500 x 101 mm)	18" x 18" (457 x 457 mm)	2 <sup>5</sup> / <sub>8</sub> " (67 mm)	6	\$ 38.25
<b>Half Size Base Racks</b>						
HBR258	Half base rack	19 <sup>3</sup> / <sub>4</sub> " x 9 <sup>7</sup> / <sub>8</sub> " x 4" (500 x 250 x 101)	18 <sup>1</sup> / <sub>4</sub> " x 8 <sup>3</sup> / <sub>8</sub> " (464 x 213)	2 <sup>5</sup> / <sub>8</sub> " (67)	6	25.90
<b>Full Size Base Cup Racks</b>						
16C258	16-compartment full cup rack	19 <sup>3</sup> / <sub>4</sub> " x 19 <sup>3</sup> / <sub>4</sub> " x 4" (500 x 500 x 101)	4 <sup>3</sup> / <sub>8</sub> " x 4 <sup>3</sup> / <sub>8</sub> " (111 x 111)	2 <sup>5</sup> / <sub>8</sub> " (67)	6	41.65
20C258	20-compartment full cup rack	19 <sup>3</sup> / <sub>4</sub> " x 19 <sup>3</sup> / <sub>4</sub> " x 4" (500 x 500 x 101)	4 <sup>3</sup> / <sub>8</sub> " x 3 <sup>1</sup> / <sub>2</sub> " (111 x 89)	2 <sup>5</sup> / <sub>8</sub> " (67)	6	43.20
<b>Half Size Base Cup Racks</b>						
8HC258	8-compartment half cup rack	19 <sup>3</sup> / <sub>4</sub> " x 9 <sup>7</sup> / <sub>8</sub> " x 4" (500 x 250 x 101)	4 <sup>7</sup> / <sub>8</sub> " x 4 <sup>1</sup> / <sub>16</sub> " (105 x 113)	2 <sup>5</sup> / <sub>8</sub> " (67)	6	29.70
10HC258	10-compartment half cup rack	19 <sup>3</sup> / <sub>4</sub> " x 9 <sup>7</sup> / <sub>8</sub> " x 4" (500 x 250 x 101)	4 <sup>7</sup> / <sub>8</sub> " x 3 <sup>1</sup> / <sub>2</sub> " (105 x 89)	2 <sup>5</sup> / <sub>8</sub> " (67)	6	29.70
<b>Full Size Full Drop Extenders – E1 and GE1</b>						
9E1	9-compartment full drop extender	19 <sup>5</sup> / <sub>8</sub> " x 19 <sup>5</sup> / <sub>8</sub> " x 2" (499 x 499 x 51)	5 <sup>7</sup> / <sub>8</sub> " x 5 <sup>7</sup> / <sub>8</sub> " (150 x 150)	1 <sup>5</sup> / <sub>8</sub> " (41)	12	17.60
16E1	16-compartment full drop extender	19 <sup>5</sup> / <sub>8</sub> " x 19 <sup>5</sup> / <sub>8</sub> " x 2" (499 x 499 x 51)	4 <sup>3</sup> / <sub>8</sub> " x 4 <sup>3</sup> / <sub>8</sub> " (111 x 111)	1 <sup>5</sup> / <sub>8</sub> " (41)	12	18.70
20GE1	20-compartment full drop extender	19 <sup>5</sup> / <sub>8</sub> " x 19 <sup>5</sup> / <sub>8</sub> " x 2" (499 x 499 x 51)	3 <sup>7</sup> / <sub>8</sub> " x 3 <sup>7</sup> / <sub>8</sub> " (98 x 98)	1 <sup>5</sup> / <sub>8</sub> " (41)	12	19.70
25E1	25-compartment full drop extender	19 <sup>5</sup> / <sub>8</sub> " x 19 <sup>5</sup> / <sub>8</sub> " x 2" (499 x 499 x 51)	3 <sup>1</sup> / <sub>2</sub> " x 3 <sup>1</sup> / <sub>2</sub> " (89 x 89)	1 <sup>5</sup> / <sub>8</sub> " (41)	12	19.70
30GE1	30-compartment full drop extender	19 <sup>5</sup> / <sub>8</sub> " x 19 <sup>5</sup> / <sub>8</sub> " x 2" (499 x 499 x 51)	3 <sup>1</sup> / <sub>8</sub> " x 3 <sup>1</sup> / <sub>8</sub> " (79 x 79)	1 <sup>5</sup> / <sub>8</sub> " (41)	12	20.05
36E1	36-compartment full drop extender	19 <sup>5</sup> / <sub>8</sub> " x 19 <sup>5</sup> / <sub>8</sub> " x 2" (499 x 499 x 51)	2 <sup>7</sup> / <sub>8</sub> " x 2 <sup>7</sup> / <sub>8</sub> " (73 x 73)	1 <sup>5</sup> / <sub>8</sub> " (41)	12	20.05
49E1	49-compartment full drop extender	19 <sup>5</sup> / <sub>8</sub> " x 19 <sup>5</sup> / <sub>8</sub> " x 2" (499 x 499 x 51)	2 <sup>7</sup> / <sub>16</sub> " x 2 <sup>7</sup> / <sub>16</sub> " (62 x 62)	1 <sup>5</sup> / <sub>8</sub> " (41)	12	20.05
<b>Full Size Half Drop Extenders – E2 and GE2</b>						
9E2	9-compartment half drop extender	19 <sup>5</sup> / <sub>8</sub> " x 19 <sup>5</sup> / <sub>8</sub> " x 2" (499 x 499 x 51)	5 <sup>7</sup> / <sub>8</sub> " x 5 <sup>7</sup> / <sub>8</sub> " (150 x 150)	1 <sup>5</sup> / <sub>8</sub> " (41)	12	16.60
16E2	16-compartment half drop extender	19 <sup>5</sup> / <sub>8</sub> " x 19 <sup>5</sup> / <sub>8</sub> " x 2" (499 x 499 x 51)	4 <sup>3</sup> / <sub>8</sub> " x 4 <sup>3</sup> / <sub>8</sub> " (111 x 111)	1 <sup>5</sup> / <sub>8</sub> " (41)	12	16.60
20E2	20-compartment half drop extender (for cups only)	19 <sup>5</sup> / <sub>8</sub> " x 19 <sup>5</sup> / <sub>8</sub> " x 2" (499 x 499 x 51)	4 <sup>3</sup> / <sub>8</sub> " x 3 <sup>1</sup> / <sub>2</sub> " (111 x 89)	1 <sup>5</sup> / <sub>8</sub> " (41)	12	15.35
20GE2	20-compartment half drop extender	19 <sup>5</sup> / <sub>8</sub> " x 19 <sup>5</sup> / <sub>8</sub> " x 2" (499 x 499 x 51)	3 <sup>7</sup> / <sub>8</sub> " x 3 <sup>7</sup> / <sub>8</sub> " (98 x 98)	1 <sup>5</sup> / <sub>8</sub> " (41)	12	17.10
25E2	25-compartment half drop extender	19 <sup>5</sup> / <sub>8</sub> " x 19 <sup>5</sup> / <sub>8</sub> " x 2" (499 x 499 x 51)	3 <sup>1</sup> / <sub>2</sub> " x 3 <sup>1</sup> / <sub>2</sub> " (89 x 89)	1 <sup>5</sup> / <sub>8</sub> " (41)	12	17.10
30GE2	30-compartment half drop extender	19 <sup>5</sup> / <sub>8</sub> " x 19 <sup>5</sup> / <sub>8</sub> " x 2" (499 x 499 x 51)	3 <sup>1</sup> / <sub>8</sub> " x 3 <sup>1</sup> / <sub>8</sub> " (79 x 79)	1 <sup>5</sup> / <sub>8</sub> " (41)	12	18.05