

# CAMRACK® COMPONENT SYSTEM

The Camrack System offers several choices for ordering the right Camracks. Please consult with your sales representative or Cambro Customer Service for all special ordering and assembly directions.

## Choose Between:

1. A complete selection of pre-assembled, ready to use Camracks listed in our catalog; or
2. Custom built special order Camracks for specific needs; or
3. Individual Camrack components for distributors to stock and build racks as needed.

## Base Rack Colors:

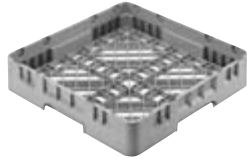
Sherwood Green (119), Soft Gray (151), Brown (167), Beige (184), Navy Blue (186), Cranberry (416), Black (110)\*, Red (163)\*, Blue (168)\*, Teal (414)\*.

**Base Cup Rack Color:** Soft Gray (151).

**Flatware Rack Color:** Soft Gray (151).

**Extender Color:** Soft Gray (151).

\*Full size only.



**BR** = Full Size Base Rack



**HBR** = Half Size Base Rack



**E1** = Full Size Full Drop Compartment Extender



**HE1** = Half Size Full Drop Compartment Extender



**E2** = Full Size Half Drop Compartment Extender



**HE2** = Half Size Half Drop Compartment Extender



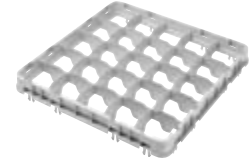
**E3** = Full Size Open Extender



**HE3** = Half Size Open Extender



**E4** = Full Size Full Drop Compartment Extender



**E5** = Full Size Half Drop Compartment Extender

## CAMRACK COMPONENTS

Only E3 extenders may be added to E4's and E5's.

| CODE  | DESCRIPTION                                       | OVERALL DIMENSIONS                    | COMPARTMENT              | INSIDE RACK HEIGHT | CASE PACK | LIST PRICE EA. |
|---|---|---------------------------------------|--------------------------|--------------------|-----------|----------------|
| <b>Full Size Base Racks</b>                       |   |                                       |                          |                    |           |                |
| BR258   | Full base rack                                    | 19¾" x 19¾" x 4" (500 x 500 x 101 mm) | 18" x 18" (457 x 457 mm) | 2⅝" (67 mm)        | 6         | \$ 38.25       |
| <b>Half Size Base Racks</b>                       |   |                                       |                          |                    |           |                |
| HBR258  | Half base rack                                    | 19¾" x 9⅞" x 4" (500 x 250 x 101)     | 18¼" x 8⅜" (464 x 213)   | 2⅝" (67)           | 6         | 25.90          |
| <b>Full Size Base Cup Racks</b>                   |   |                                       |                          |                    |           |                |
| 16C258  | 16-compartment full cup rack                      | 19¾" x 19¾" x 4" (500 x 500 x 101)    | 4⅜" x 4⅜" (111 x 111)    | 2⅝" (67)           | 6         | 41.65          |
| 20C258  | 20-compartment full cup rack                      | 19¾" x 19¾" x 4" (500 x 500 x 101)    | 4⅜" x 3½" (111 x 89)     | 2⅝" (67)           | 6         | 43.20          |
| <b>Half Size Base Cup Racks</b>                   |   |                                       |                          |                    |           |                |
| 8HC258  | 8-compartment half cup rack                       | 19¾" x 9⅞" x 4" (500 x 250 x 101)     | 4⅜" x 4⅞" (105 x 113)    | 2⅝" (67)           | 6         | 29.70          |
| 10HC258   | 10-compartment half cup rack                      | 19¾" x 9⅞" x 4" (500 x 250 x 101)     | 4⅜" x 3½" (105 x 89)     | 2⅝" (67)           | 6         | 29.70          |
| <b>Full Size Full Drop Extenders – E1 and GE1</b> |   |                                       |                          |                    |           |                |
| 9E1   | 9-compartment full drop extender                  | 19⅝" x 19⅝" x 2" (499 x 499 x 51)     | 5⅞" x 5⅞" (150 x 150)    | 1⅝" (41)           | 12        | 17.60          |
| 16E1  | 16-compartment full drop extender                 | 19⅝" x 19⅝" x 2" (499 x 499 x 51)     | 4⅜" x 4⅜" (111 x 111)    | 1⅝" (41)           | 12        | 18.70          |
| 20GE1   | 20-compartment full drop extender                 | 19⅝" x 19⅝" x 2" (499 x 499 x 51)     | 3⅞" x 3⅞" (98 x 98)      | 1⅝" (41)           | 12        | 19.70          |
| 25E1  | 25-compartment full drop extender                 | 19⅝" x 19⅝" x 2" (499 x 499 x 51)     | 3½" x 3½" (89 x 89)      | 1⅝" (41)           | 12        | 19.70          |
| 30GE1   | 30-compartment full drop extender                 | 19⅝" x 19⅝" x 2" (499 x 499 x 51)     | 3⅞" x 3⅞" (79 x 79)      | 1⅝" (41)           | 12        | 20.05          |
| 36E1  | 36-compartment full drop extender                 | 19⅝" x 19⅝" x 2" (499 x 499 x 51)     | 2⅞" x 2⅞" (73 x 73)      | 1⅝" (41)           | 12        | 20.05          |
| 49E1  | 49-compartment full drop extender                 | 19⅝" x 19⅝" x 2" (499 x 499 x 51)     | 2⅞" x 2⅞" (62 x 62)      | 1⅝" (41)           | 12        | 20.05          |
| <b>Full Size Half Drop Extenders – E2 and GE2</b> |   |                                       |                          |                    |           |                |
| 9E2   | 9-compartment half drop extender                  | 19⅝" x 19⅝" x 2" (499 x 499 x 51)     | 5⅞" x 5⅞" (150 x 150)    | 1⅝" (41)           | 12        | 16.60          |
| 16E2  | 16-compartment half drop extender                 | 19⅝" x 19⅝" x 2" (499 x 499 x 51)     | 4⅜" x 4⅜" (111 x 111)    | 1⅝" (41)           | 12        | 16.60          |
| 20E2  | 20-compartment half drop extender (for cups only) | 19⅝" x 19⅝" x 2" (499 x 499 x 51)     | 4⅜" x 3½" (111 x 89)     | 1⅝" (41)           | 12        | 15.35          |
| 20GE2   | 20-compartment half drop extender                 | 19⅝" x 19⅝" x 2" (499 x 499 x 51)     | 3⅞" x 3⅞" (98 x 98)      | 1⅝" (41)           | 12        | 17.10          |
| 25E2  | 25-compartment half drop extender                 | 19⅝" x 19⅝" x 2" (499 x 499 x 51)     | 3½" x 3½" (89 x 89)      | 1⅝" (41)           | 12        | 17.10          |
| 30GE2   | 30-compartment half drop extender                 | 19⅝" x 19⅝" x 2" (499 x 499 x 51)     | 3⅞" x 3⅞" (79 x 79)      | 1⅝" (41)           | 12        | 18.05          |

# CAMRACK® COMPONENT SYSTEM

| CODE  | DESCRIPTION                       | OVERALL DIMENSIONS   | COMPARTMENT  | INSIDE RACK HEIGHT                      | CASE PACK | LIST PRICE EA. |
|---|-----------------------------------|--|--|---|-----------|----------------|
| <b>Full Size Half Drop Extenders – E2 and GE2 (continued)</b> |                                   |  |  |   |           |                |
| 36E2  | 36-compartment half drop extender | 19 <sup>5</sup> / <sub>8</sub> " x 19 <sup>5</sup> / <sub>8</sub> " x 2" (499 x 499 x 51 mm) | 2 <sup>7</sup> / <sub>16</sub> " x 2 <sup>7</sup> / <sub>16</sub> " (73 x 73 mm) | 1 <sup>5</sup> / <sub>8</sub> " (41 mm) | 12        | \$ 18.05       |
| 49E2  | 49-compartment half drop extender | 19 <sup>5</sup> / <sub>8</sub> " x 19 <sup>5</sup> / <sub>8</sub> " x 2" (499 x 499 x 51)    | 2 <sup>7</sup> / <sub>16</sub> " x 2 <sup>7</sup> / <sub>16</sub> " (62 x 62)    | 1 <sup>5</sup> / <sub>8</sub> " (41)    | 12        | 18.05          |
| <b>Full Size Open Extender – E3</b>                           |                                   |  |  |   |           |                |
| E3  | Open extender                     | 19 <sup>5</sup> / <sub>8</sub> " x 19 <sup>5</sup> / <sub>8</sub> " x 2" (499 x 499 x 51)    | 18" x 18" (457 x 457)  | 1 <sup>5</sup> / <sub>8</sub> " (41)    | 12        | 14.15          |
| <b>Full Size Full Drop Extender – E4</b>                      |                                   |  |  |   |           |                |
| 16E4  | 16-compartment full drop extender | 19 <sup>5</sup> / <sub>8</sub> " x 19 <sup>5</sup> / <sub>8</sub> " x 2" (499 x 499 x 51)    | 4 <sup>3</sup> / <sub>8</sub> " x 4 <sup>3</sup> / <sub>8</sub> " (111 x 111)    | 1 <sup>5</sup> / <sub>8</sub> " (41)    | 12        | 20.05          |
| 25E4  | 25-compartment full drop extender | 19 <sup>5</sup> / <sub>8</sub> " x 19 <sup>5</sup> / <sub>8</sub> " x 2" (499 x 499 x 51)    | 3 <sup>1</sup> / <sub>2</sub> " x 3 <sup>1</sup> / <sub>2</sub> " (89 x 89)      | 1 <sup>5</sup> / <sub>8</sub> " (41)    | 12        | 22.90          |
| 36E4  | 36-compartment full drop extender | 19 <sup>5</sup> / <sub>8</sub> " x 19 <sup>5</sup> / <sub>8</sub> " x 2" (499 x 499 x 51)    | 2 <sup>7</sup> / <sub>16</sub> " x 2 <sup>7</sup> / <sub>16</sub> " (73 x 73)    | 1 <sup>5</sup> / <sub>8</sub> " (41)    | 12        | 25.90          |
| <b>Full Size Half Drop Extender – E5</b>                      |                                   |  |  |   |           |                |
| 16E5  | 16-compartment half drop extender | 19 <sup>5</sup> / <sub>8</sub> " x 19 <sup>5</sup> / <sub>8</sub> " x 2" (499 x 499 x 51)    | 4 <sup>3</sup> / <sub>8</sub> " x 4 <sup>3</sup> / <sub>8</sub> " (111 x 111)    | 1 <sup>5</sup> / <sub>8</sub> " (41)    | 12        | 17.65          |
| 25E5  | 25-compartment half drop extender | 19 <sup>5</sup> / <sub>8</sub> " x 19 <sup>5</sup> / <sub>8</sub> " x 2" (499 x 499 x 51)    | 3 <sup>1</sup> / <sub>2</sub> " x 3 <sup>1</sup> / <sub>2</sub> " (89 x 89)      | 1 <sup>5</sup> / <sub>8</sub> " (41)    | 12        | 19.20          |
| 36E5  | 36-compartment half drop extender | 19 <sup>5</sup> / <sub>8</sub> " x 19 <sup>5</sup> / <sub>8</sub> " x 2" (499 x 499 x 51)    | 2 <sup>7</sup> / <sub>16</sub> " x 2 <sup>7</sup> / <sub>16</sub> " (73 x 73)    | 1 <sup>5</sup> / <sub>8</sub> " (41)    | 12        | 20.05          |
| <b>Half Size Full Drop Extenders – HE1</b>                    |                                   |  |  |   |           |                |
| 8HE1  | 8-compartment full drop extender  | 19 <sup>3</sup> / <sub>4</sub> " x 9 <sup>7</sup> / <sub>8</sub> " x 2" (502 x 252 x 51)     | 4 <sup>1</sup> / <sub>8</sub> " x 4 <sup>1</sup> / <sub>16</sub> " (105 x 113)   | 1 <sup>5</sup> / <sub>8</sub> " (41)    | 12        | 15.70          |
| 10HE1   | 10-compartment full drop extender | 19 <sup>3</sup> / <sub>4</sub> " x 9 <sup>7</sup> / <sub>8</sub> " x 2" (502 x 252 x 51)     | 4 <sup>1</sup> / <sub>8</sub> " x 3 <sup>1</sup> / <sub>2</sub> " (105 x 89)     | 1 <sup>5</sup> / <sub>8</sub> " (41)    | 12        | 15.70          |
| 17HE1   | 17-compartment full drop extender | 19 <sup>3</sup> / <sub>4</sub> " x 9 <sup>7</sup> / <sub>8</sub> " x 2" (502 x 252 x 51)     | ∅ 2 <sup>15</sup> / <sub>16</sub> " (∅ 74)                                       | 1 <sup>5</sup> / <sub>8</sub> " (41)    | 12        | 16.35          |
| <b>Half Size Half Drop Extenders – HE2</b>                    |                                   |  |  |   |           |                |
| 8HE2  | 8-compartment half drop extender  | 19 <sup>3</sup> / <sub>4</sub> " x 9 <sup>7</sup> / <sub>8</sub> " x 2" (502 x 252 x 51)     | 4 <sup>1</sup> / <sub>8</sub> " x 4 <sup>1</sup> / <sub>16</sub> " (105 x 113)   | 1 <sup>5</sup> / <sub>8</sub> " (41)    | 12        | 14.10          |
| 10HE2   | 10-compartment half drop extender | 19 <sup>3</sup> / <sub>4</sub> " x 9 <sup>7</sup> / <sub>8</sub> " x 2" (502 x 252 x 51)     | 4 <sup>1</sup> / <sub>8</sub> " x 3 <sup>1</sup> / <sub>2</sub> " (105 x 89)     | 1 <sup>5</sup> / <sub>8</sub> " (41)    | 12        | 14.75          |
| 17HE2   | 17-compartment half drop extender | 19 <sup>3</sup> / <sub>4</sub> " x 9 <sup>7</sup> / <sub>8</sub> " x 2" (502 x 252 x 51)     | ∅ 2 <sup>15</sup> / <sub>16</sub> " (∅ 74)                                       | 1 <sup>5</sup> / <sub>8</sub> " (41)    | 12        | 15.70          |
| <b>Half Size Open Extenders – HE3</b>                         |                                   |  |  |   |           |                |
| HE3   | Open extender                     | 19 <sup>3</sup> / <sub>4</sub> " x 9 <sup>7</sup> / <sub>8</sub> " x 2" (502 x 252 x 51)     | 18 <sup>3</sup> / <sub>4</sub> " x 8 <sup>3</sup> / <sub>8</sub> " (464 x 213)   | 1 <sup>5</sup> / <sub>8</sub> " (41)    | 12        | 12.50          |

∅ = Diameter

