

NEWAGE INDUSTRIAL NEWAGE TOP 10



1331

1

Heavy Duty Pan Racks

- End or Side Loading.
- 1½" - 6" runner spacing.
- 5" plate type casters.

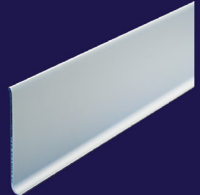


2

9787C

Aluminum Cove Baseboard

- 96" long.
- Inside and outside corners.



6331

3

Standard Pan Racks

- End or Side Loading.
- 2"-5" runner spacing.
- 5" stem type casters



6014

4

Standard Dunnage Racks

- All welded units in various sizes with capacities up to 2000 lbs.



2448TB

5

"Adjust-A-Shelf"

- Heavy Duty, T-Bar Style Shelf.



2029

6

Heavy Duty Dunnage Racks

- All welded units in various sizes with capacities up to 4000 lbs.



2448HD

7

"Adjust-A-Shelf"

- Heavy Duty, Bar Style Shelf.



8

1505

Steamtable Pan Racks

- Full-Size, End-Loading.
- 3" or 5" spacing.
- 5" stem type casters



97286

9

Inverted Wall Shelves

- Aluminum T-Bar.
- All-welded construction.
- 500 lb. weight capacity.



8

1505

Steamtable Pan Racks

- Full-Size, Side-Loading.
- 3" or 5" spacing.
- 5" plate type casters



1509

10

Steamtable Pan Racks