

MODELS

- IHC-27
- IHC-48



OPTIONS

- Casters
- Extra welded wire gray epoxy-coated cantilever shelves
- Pan rack
- Condensate evaporator drain pan (Must be field installed and requires a dedicated 15A, 120v circuit)

FEATURES

CONSTRUCTION

- Stainless steel exterior
- Anodized aluminum interior
- Heavy-duty 6"-7" adjustable legs
- Four heavy-duty welded wire gray epoxy-coated cantilever shelves per section
- 2-1/2" foamed-in-place "zero ODP" urethane insulation

DOORS

- 2" thick stainless steel foamed-in-place outer doors
- Two staggered height insulated inner doors with magnetic catches per section
- Inner and outer doors lift off
- Self-closing with 90° hold-open feature
- Door swing:
 - IHC-27..... hinged left
 - IHC-48..... left hinged left, right hinged right
- Sure-sealing replaceable magnetic gaskets
- Heavy-duty horizontal handle
- Anti-condensate door frame heater provided through discharge liquid line

REFRIGERATION

- Refrigerant: R290
- Self-contained, top mounted hermetic refrigeration system (one condensing unit on IHC-27, two on IHC-48)
- Temperature range: 0° to -30°F (-18° to -34°C)
- R-factor (insulation efficiency rating): 21.55 on walls, 17.24 on doors
- Drain plumbing hookup recommended. Condensate pan available if there is no access to drain plumbing. Condensate pan must be field installed and requires a dedicated 15 amp, 120 volt circuit.

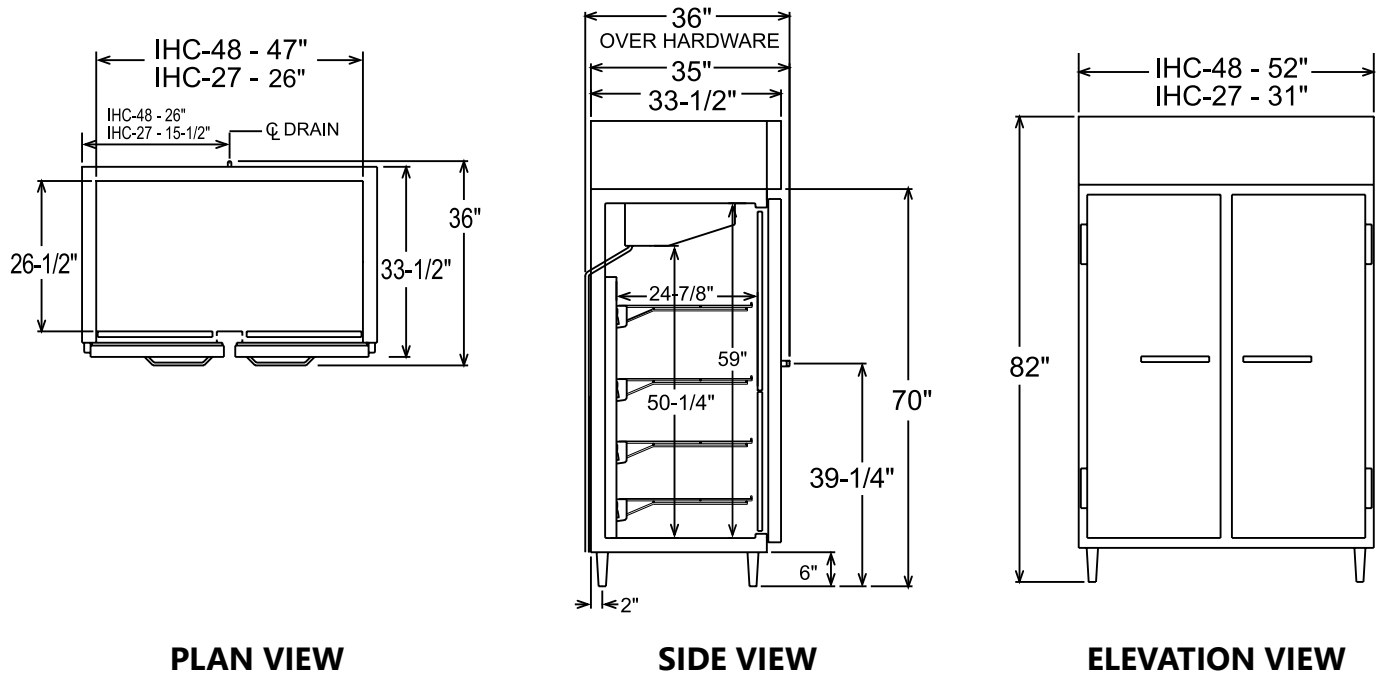
WARRANTY

- Standard limited two year parts and labor
- Additional three year coverage on compressor part

TECHNICAL SPECIFICATIONS

Models	IHC-27	IHC-48
Crated Weight (lbs) (kg)	590 (268)	840 (382)
Crated Height (in) (mm)	85 (2159)	85 (2159)
Crated Width (in) (mm)	40 (1016)	60 (1524)
Crated Depth (in) (mm)	43 (1092)	43 (1092)
Overall Height (in) (mm)	82 (2083)	82 (2083)
Overall Width (in) (mm)	31 (787)	52 (1321)
Overall Depth (in) (mm)	36 (914)	36 (914)
Interior Height (in) (mm)	49 (1245)*	49 (1245)*
Interior Width (in) (mm)	25-7/8 (657)	47 (1194)
Interior Depth (in) (mm)	26-1/2 (673)	26-1/2 (673)
Can Capacity (3 gal. cans)	20	43
No. of Sections	1	2
No. of Shelves	4	8
Condensing Unit Size	5/6 HP (1 unit)	5/6 HP (2 units)
Refrigerant	R290	R290
Electrical Characteristics	115/60/1	115/60/1
NEMA Plug Configuration	5-15P	5-20P
Total Amp Draw	5.5	16.0

* Measured from cabinet floor to bottom of evaporator drain pan.



LISTINGS

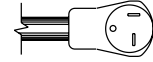


HOOK UP

Via plug in, 8 foot long, flexible 3 wire 14/3 cord with molded plug.



NEMA 5-15P (IHC-27)



NEMA 5-20P (IHC-48)

BID SPECIFICATIONS

Item no. IHC-_____

Provide _____()

Ice Cream Hardening and Holding Cabinet(s), Master-Bilt® model no. IHC-_____.

Cabinet will be equipped with an electronically controlled monitoring system.

It will also be provided with 6"-7" adjustable legs, four welded wire,

gray epoxy-coated cantilever shelves, 2 1/2" foamed-in-place "zero ODP" polyurethane insulated walls.

Cabinet to have stainless steel exterior and anodized aluminum interior.

Cabinet also to have 2" stainless steel, self-closing, foamed-in-place doors. Interior doors to be provided with cabinet.

The refrigeration system is to be top mounted, self-contained and use R290 refrigerant. The temperature range will be 0° to -30°F (-18° to -34°C).

Cabinet to have standard limited two year parts and labor with additional three year coverage on compressor part.

Cabinet to be UL, C-UL and NSF listed.

NOTE: Cabinet designed for optimum performance in air-conditioned area at 75°F ambient and 55% relative humidity. All specifications within this publication subject to change without notice.