

PRODIGY[®] ELITE

MC0630 - 600lb Cube Ice Machine

Prodigy ELITE[®] Modular Cube Ice Machine

ENHANCED RELIABILITY

Integrated ICELINQ[®] App

Provides real-time diagnostics, access to settings and guided cleanings. The app also contains specific information for convenient maintenance.

Upgraded Sensors

Ice thickness and water sensor design enhances cleanability and amplifies durability.

Preservation Mode

Maximizes uptime and notifies users of potential issues.

EASE OF USE

AutoAlert[™] Panel

The AutoAlert[™] panel displays relevant machine status that is visible across the room. Now featuring an external bin full indicator light and easier to read 16-segment display.

SANITARY DESIGN

Removable, External Air Filters

Speeds up cleaning process and reduces unit footprint.

WaterSense Adaptive Purge

Optimizes water consumption, keeping the machine cleaner and operating more efficiently.



Compatible with ICELINQ[®]



The ICELINQ[®] app simplifies interaction with machine via Bluetooth[®] connection



Intelligent sensor technology maximizes efficiency and lowers operating costs



24 Hour Volume Production

| Air Cooled | | Remote | | Water Cooled | |
|------------------------|--------------|------------------------|------------------------|------------------------|------------------------|
| 70°F/21°C 50°F/10°C | Air Water | 90°F/32°C 70°F/21°C | 70°F/21°C 50°F/10°C | 90°F/32°C 70°F/21°C | 70°F/21°C 50°F/10°C |
| 640/291 lb/kg | | 474/215 lb/kg | 614/279 lb/kg | 540/245 lb/kg | 633/288 lb/kg |



Modular Bin Options

| Model Number* | Dimensions W" x D" x H" | Bin Application Capacity lb/kg | Finish | Ship Weight lb/kg |
|---------------|-------------------------|--------------------------------|------------------|-------------------|
| B330P | 30 x 34 x 36 | 344/156 | Poly | 130/59 |
| B530S or P | 30 x 34 x 50 | 536/244 | Metallic or Poly | 150/68 |
| B842S | 42 x 34 x 44 | 536/244 | Metallic | 190/86 |



Contact Scotsman for bin top requirements.



Cube Ice

Common ice form, ideal for mixed drinks.



Small Cube
7/8" x 7/8" x 3/8"
(2.22 x 2.22 x .95 cm)



Medium Cube
7/8" x 7/8" x 7/8"
(2.22 x 2.22 x 2.22 cm)



Certification



Warranty

- 3 Years parts and labor on all components.
- 5 Years parts and labor on the evaporator.
- 5 Years parts on the compressor and condenser.
- Warranty valid in North, South & Central America for commercial installations.
- Contact factory for warranty in other regions.
- Residential Applications: 1 year parts and labor

Scotsman[®]

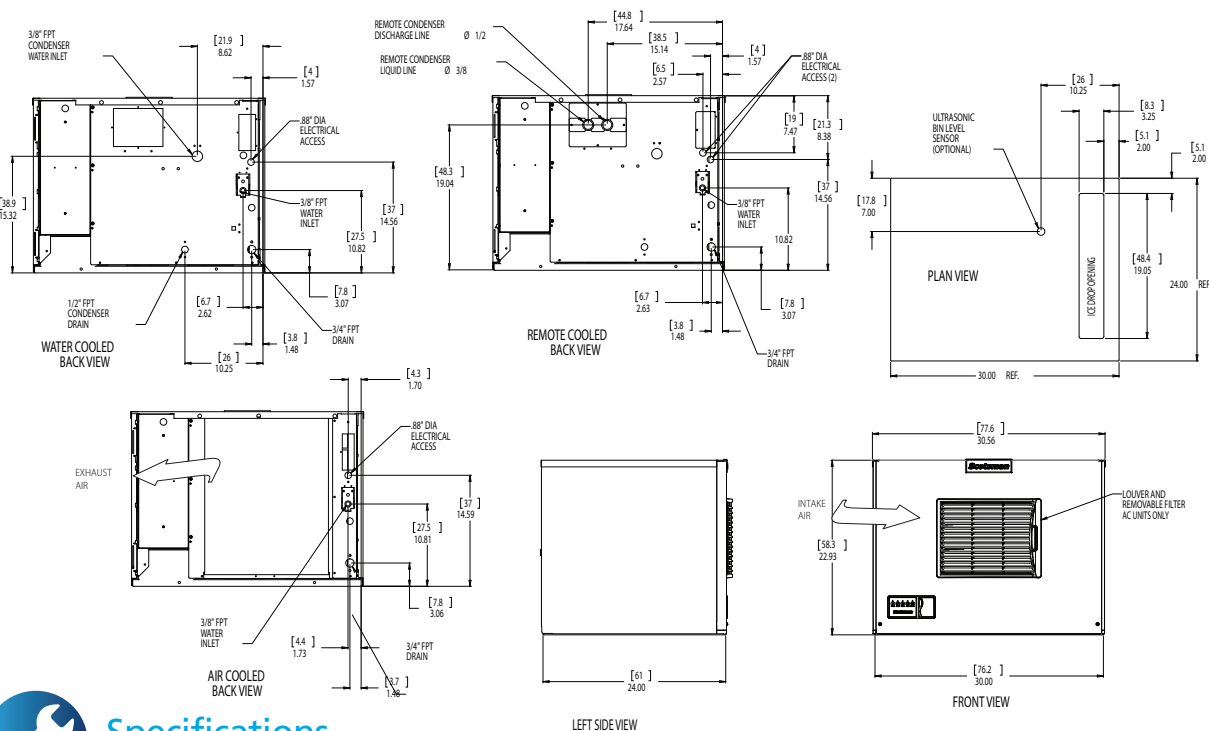
101 Corporate Woods Parkway, Vernon Hills, IL 60061

1-800-SCOTSMAN | Fax: 847-913-9844 | www.scotsman-ice.com | customer.relations@scotsman-ice.com

MC0630 - 600lb Cube Ice Machine

MC0630 - 600lb Cube Ice Machine

Prodigy ELITE® Modular Cube Ice Machine



Specifications

| | | | | | | | Water Usage | | | |
|----------------------------|----------------|------------------|--------------------------------|---------|--------------|-----------------------|---------------------------------|------------|-------------|---|
| Model Number | Condenser Unit | Basic Electrical | Max. Fuse Size | Circuit | Min. Circuit | Energy Consumption | Gallons/100 lb (liters/45.4 kg) | | | |
| Cube Size: medium or small | | Volts/Hz/Phase | or HACR Circuit Breaker (amps) | Wires | Ampacity | kWh/100 lb (45.4 kg) | Potable | Condenser | Energy Star | |
| | | | | | | 90°F(32°C)/70°F(21°C) | 90°F(32°C)/70°F(21°C) | 90°F(21°C) | | |
| med. | MC0630MA-32 | Air | 208-230/60/1 | 15 | 2 | 11.0 | 5.63 | 18.0/68.2 | - | |
| | MC0630MR-32 | Remote | 208-230/60/1 | 15 | 2 | 10.8 | 5.35 | 18.0/68.2 | - | ✓ |
| | MC0630MW-3 | Water | 208-230/60/1 | 15 | 2 | 9.8 | 4.10 | 18.0/68.2 | 160.0/606.7 | |
| sm. | MC0630SA-32 | Air | 208-230/60/1 | 15 | 2 | 11.0 | 5.63 | 18.0/68.2 | - | |
| | MC0630SR-32 | Remote | 208-230/60/1 | 15 | 2 | 10.8 | 5.35 | 18.0/68.2 | - | ✓ |
| | MC0630SW-32 | Water | 208-230/60/1 | 15 | 2 | 9.8 | 4.10 | 18.0/68.2 | 160.0/606.7 | |



All Models

Dimensions (W x D x H):

Unit: 30" x 24" x 23"
(76.2 x 61.0 x 58.4 cm)

Shipping Carton: 33.5" x 27.5" x 28"
(85.1 x 69.9 x 71.1 cm)

Shipping Weight: 190 lb / 86 kg
BTUs per hour: 12,700

Refrigerant: R-404A



Accessories

| Model Number | Description |
|--------------|---|
| KVS | Vari-Smart™ Ice Level Control - Precisely control ice levels using ultrasonic technology. |
| KBILC | Basic Ice Level Control - Thermistor technology, ideal for dispenser applications. |
| KSBU | Smart-Board™ Advanced Control - Use additional operational data for fast diagnosis. |
| KSBU-N | Smart-Board™ Advanced Control with Network - Network capable. |
| ERC311-32 | Remote condenser for MC0630xR, 115/60/1- Consult remote condenser spec sheet for details. |
| BRTE10 | 10ft (3.0 m) line set, brazing required |
| BRTE25 | 25ft (7.6 m) line set, brazing required |
| BRTE40 | 40ft (12.2 m) line set, brazing required |
| BRTE75 | 75ft (22.9 m) line set, brazing required |
| KPAS | Prodigy Advanced Sustainability Kit - Includes KVS and KSBU - N |
| XR-30 | XSafe® Sanitation System for Modular Cube - Continuous operation, field-installed. |

Scotsman recommends all ice machines have water filtration. See Scotsman water filter specification sheet for details.



Operating Requirements

| | Minimum | Maximum |
|------------------------|-------------------|---------------------|
| Air Temperatures | 50°F (10°C) | 100°F (38°C) |
| Water Temperatures | 40°F (4.4°C) | 100°F (38°C) |
| Remote Cond. Temps | -20°F (-29°C) | 120°F (49°C) |
| Potable Water Pressure | 20 PSIG (1.4 bar) | 80 PSIG (5.5 bar) |
| Cond. Water Pressure | 20 PSIG (1.4 bar) | 230 PSIG (16.1 bar) |
| Electrical Voltage | -5% | +10% |

Specifications and design are subject to change without notice.

Scotsman®

B322S, B330P, B530P/S, B842S, B948S - Storage Bins

Modular Storage Bins



B530S shown with optional KLP8S legs.

Features

- New sleek, contemporary styling. A perfect match to Prodigy Plus cube ice machines and other Scotsman ice machines.
- Convenient, built-in scoop holder.
- Easily removable baffle, no tools required for cleaning.
- Lightweight.
- Unique recessed drain fitting for maximum installation flexibility.
- Corrosion resistant.
- Spring loaded door with hidden hinges for easy opening and closing (except for B230P).
- Available in metallic finish or durable rotocast plastic.
- Ice scoop included.



Certification



Storage Capacity

| B322S | B330P | B530P/S | B842S | B948S |
|----------------------|----------------------|----------------------|----------------------|----------------------|
| Application Capacity | Application Capacity | Application Capacity | Application Capacity | Application Capacity |
| 370/168 lb/kg | 344/156 lb/kg | 536/244 lb/kg | 778/353 lb/kg | 893/406 lb/kg |

Application capacity is based on 90% of total volume in cubic feet x 34 lb/ft³



Polyurethane Insulation

Foam insulation is forced between the wall and liner under heat and pressure to form a perfect wall to wall bond, preserving ice supply for long periods.



Bin Interior

The polyethylene bin interior is sanitary and easy to clean. Resists scratches and scuffs from ice scoops.



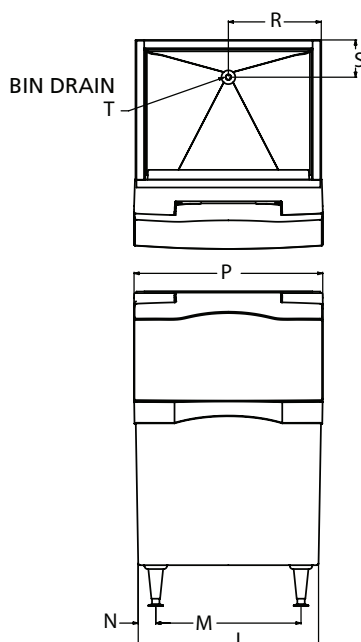
Warranty

- 3 years parts and labor on all components.
- Warranty valid in North, South & Central America for commercial installations.
- Contact factory for warranty in other regions.
- Residential Applications: 1 year parts and labor

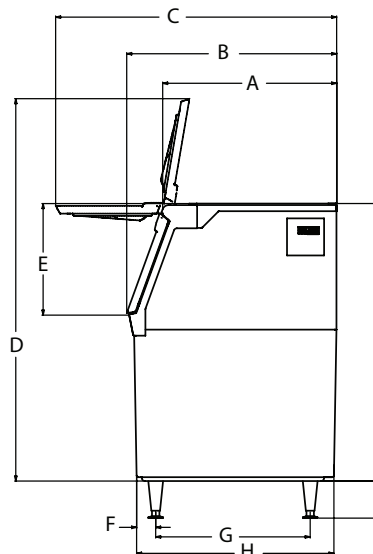
Scotsman®

- 101 Corporate Woods Parkway, Vernon Hills, IL 60061 •
- 1-800-SCOTSMAN • Fax: 847-913-9844 • www.scotsman-ice.com • customer.relations@scotsman-ice.com •

B322S, B330P, B530P/S, B842S, B948S -
Storage Bins



Installation Note: Allow 6" space at back for utility connections.



Dimensions

| Model # | A | B | C | D | E | F | G | H | J | K | L | M | N | P | R | S | T |
|---------|-------|----|------|-------|----|------|----|-------|----|---|----|------|------|------|----|---|---------|
| B322S | 28.23 | 34 | 45.5 | 61.24 | 18 | 3.88 | 25 | 32.75 | 44 | 6 | 22 | 15.5 | 3.25 | 22.5 | 11 | 6 | .75 NPT |
| B330P | 28.15 | 34 | 45.5 | 47.24 | 18 | 3.33 | 25 | 32.42 | 31 | 6 | 30 | 23.5 | 3.08 | 30.5 | 15 | 6 | .75 NPT |
| B530P/S | 28.15 | 34 | 45.5 | 61.24 | 18 | 3.09 | 25 | 31.93 | 44 | 6 | 30 | 23.5 | 2.83 | 30.5 | 15 | 6 | .75 NPT |
| B842S | 28.07 | 34 | 45.5 | 61.87 | 18 | 3.88 | 25 | 32.75 | 44 | 6 | 42 | 35.5 | 3.25 | 42.5 | 21 | 6 | .75 NPT |
| B948S | 28.05 | 34 | 45.5 | 61.24 | 18 | 3.88 | 25 | 32.75 | 44 | 6 | 48 | 41.5 | 3.25 | 48.5 | 24 | 6 | .75 NPT |



Overall Dimensions

| Model # | Carton (W x D x H)* |
|---------|---------------------|
| B322S | 22" x 34" x 44" |
| B330P | 30" x 34" x 31" |
| B530P | 30" x 34" x 44" |
| B530S | 30" x 34" x 44" |
| B842S | 42" x 34" x 44" |
| B948S | 48" x 34" x 44" |

* Add 6" Height for bin legs.



Accessories*

| Model Number | Description |
|--------------|--|
| KBC1 | Kit, bit casters for B530S, B842S, B948S and SB380.** Not for use with B322S or SB480 when using extensions. |
| KBC1P | Kit, bin casters for B330P and B530P.** |
| KLP7 | Kit, legs, 6", flanged feet, for B bins, HD dispensers, AFE, CU1/2/3 and NSE. |
| KLP8S | Kit, legs, 6", stainless steel, for B bins, HD dispensers, AFE, CU1/2/3 and NSE. |
| BGS10 | Bagger, hooks on any bin. |
| KBAG | Kit, bags, 1000, for BGS10. |
| KSEALER | Kit, tape sealer, for BGS10. |
| KTAPE | Kit, tape, 180 ft. roll, for BGS10. |
| KHOLDER | Kit, scoop holder, stainless steel. |

**3.5" Diameter, 2 locking, raises bin 4.5".



Shipping Information

| Model # | Carton (W x D x H) | Weight (lb/kg) |
|---------|--------------------|----------------|
| B322S | 26" x 36" x 49" | 140/64 |
| B330P | 33" x 36" x 35" | 90/41 |
| B530P | 33" x 37" x 49" | 110/50 |
| B530S | 33" x 37" x 49" | 150/68 |
| B842S | 45" x 36" x 49" | 190/86 |
| B948S | 51" x 36" x 49" | 209/95 |