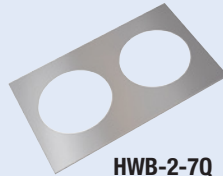


Drop-In Hot/Cold Well and Heated Well Accessories

(available for purchase at any time)

HWB-2-7Q
shown with two
7QT-PAN and
7QT-LID-1



HWB-2-7Q



HWB-2-11Q



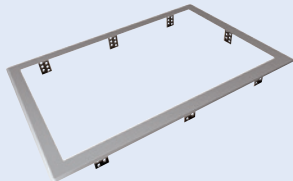
HWB-3-4Q

ADAPTERS – SUPPORT BARS

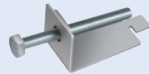
HWB-2-7Q	Adapter to convert warmer to hold two 7-Quart Inserts (models HWBI & HWB-FUL series only)
HWB-3-4Q	Adapter to convert warmer to hold three 4-Quart Inserts (models HWBI & HWB-FUL series only)
HWB-2-11Q	Adapter to convert warmer to hold two 11-Quart Inserts (model HWB-43 series only)
HWB12BAR	12" Pan Support Bar for Built-In and Drop-In Heated Wells
HWB20BAR	20" Pan Support Bar for Built-In and Drop-In Heated Wells (not available for HWBI-43 series)
HWBGM12BAR	12" Pan Support Bar for Drop-In Modular/Ganged Models
HWBGM20BAR	20" Pan Support Bar for Drop-In Modular/Ganged Models (not available for HWBI43 series)

Support Bars

Choose the appropriate kit for HWBI or HWB series



HWB-FUL-MNT
Choose the appropriate kit for HWB-FUL, HWB-43 or HWB-4Q, -7Q, -11Q series



HWB-MNT-REC or HWB-MNT-RND



HWBI2MANIF



BALLVALVE1INCH

MOUNTING KITS – VALVES

Necessary at your Well Installation –

HWB-FUL-MNT	Mounting Kit for combustible countertops for HWB-FUL series only
HWB-43-MNT	Mounting Kit for combustible countertops for HWB-43 series only
HWB-4Q-MNT	Mounting Kit for combustible countertops for HWB-4Q series only
HWB-7Q-MNT	Mounting Kit for combustible countertops for HWB-7Q series only
HWB-11Q-MNT	Mounting Kit for combustible countertops for HWB-11Q series only
HWB-MNT-REC	Kit allows mounting to thick countertops - 8 Brackets (HWBI and HWB Rectangular Heated Wells only)
HWB-MNT-RND	Kit allows mounting to thick countertops - 4 Bracket (Round Heated Wells only)

External Manifold includes Individual Ball Valve for each Well (HWBI only, not available for the Slim models) –

HWBI2MANIF	2-Pan Accessory
HWBI3MANIF	3-Pan Accessory
HWBI4MANIF	4-Pan Accessory
HWBI5MANIF	5-Pan Accessory
HWBI6MANIF	6-Pan Accessory

Necessary at your Well Installation –

BALLVALVE3/4	High Temperature 3/4" NPT Ball Valve for units with Individual Drain(s) and no Manifold
BALLVALVE1INCH	High Temperature 1" NPT Ball Valve for units with Manifold Drain (Ganged Heated Wells only)
GATEVALVE3/4IN	High Temperature 3/4" NPT Gate Valve for units with Individual Drain(s) and no Manifold
GATEVALVE1INCH	High Temperature 1" NPT Gate Valve for units with Manifold Drain (Ganged Heated Wells only)
HWB-RDHV	Heated Well Remote Handle for 3/4" Drains only and includes a Ball Valve



GATEVALVE1INCH



HWB-RDHV
Attaches to 3/4" Drain and includes a Ball Valve