



ACCESSORIES



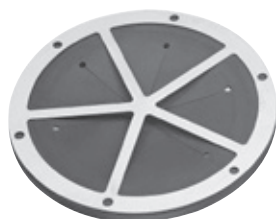
ADJUSTABLE SUPPORT LEGS

- Recommended for all disposer installations & mountings
- Sold in sets of two legs
- Two support legs can be added to small disposer orders
- Two support legs included with Medium disposers, but not installed
- Three support legs are included and installed on Large disposers.
- P/N 11757C



FLANGE FOOT

- Provides secure floor mounting option for commercial disposers
- Use anywhere extra stability or security is a concern
- Flange foot is sold individually and includes one set screw
- Order two feet for medium size units and three feet for large units
- P/N 14394



THROAT GUARD

- Throat Guard mounts at the throat opening of the disposer
- Keeps hands safely away from disposer grind chamber
- Cannot be removed while disposer is installed on sink or trough
- Fits any disposer with a standard 6⁵/₈" throat opening
- Includes gasket and mounting bolts
- P/N 13620



TAMPER-PROOF CONTROL PANEL SCREWS

- Replaces standard closure screws on disposer control panels
- Eliminates unauthorized entry into control panel for safety and security
- For use with CC-101, CC-202, AS-101, WX-101 and PR-101 disposer control panels
- Includes four control panel replacement screws and matching wrench
- P/N 13946



MAGNETIC SILVER SAVER

- Mounts to any trough system
- To order, specify part# 13983
- One Trough Magnetic Silver Saver approximately 18 inches from disposer hole is recommended. Additional magnets along length of trough are optional.

Our products appear on *The KCL CADalog*
More information is available from
Kochman Consultants, Ltd. at www.kclcad.com.



1250 International Dr.
Mount Pleasant, WI 53177
TEL: 800-845-8345



www.insinkerator.com/foodservice