

JDF®-4S, 120V LIT PB W/4 SEG GFX

Height: 33.1" Width: 15.7" Depth: 27.5"
(84.1cm) (39.9cm) (69.9cm)



- Patented High Intensity Mixing System delivers consistent quality beverages in the cup --- cup after cup, from the top of the cup to the bottom of the cup
- Four Segment Graphic Door makes graphics changes easy. Includes variety- pack of eight displays: Apple Juice; Cranberry Juice; Grape Juice; Lemonade; Orange Juice; Pineapple Juice; Prune Juice; Iced Tea
- LED lighted door graphics bring high visibility to front-of-house applications
- One dispenser delivers both frozen and ambient concentrate products, to maximize profitability by providing greater flexibility in product offerings
- 18lb (8.2 kg) ice bank provides superior cold drink capacity
- Both push and hold dispense and optional single size portion control dispense available in the same dispenser
- 7" (17.8cm) cup clearance accommodates most juice containers
- Quick dispense with 1.0 to 1.5oz (29.6 to 44.4ml) per second flow rate
- Door lock standard
- ADA compatible dispense switch kit model available for self-serve locations
- Service friendly design makes set up and maintenance simple
- Pumps and Mixes most 2+1 to 11+1 concentrates accurately and consistently, including 4+1 and 5+1 high viscosity concentrates

Agency:



Specifications

Product #: 37300.0079
Flavors: 4 Flavors
Water Access: Plumbed
Finish: Black
Door: Lit
Refrigerant: R-134A
Ice Bank: 18.00 lbs (8.165 kgs)
Dispense: Push Button

Additional Features

Electrical & Capacity

Volts*	Amps	Watts	Cord Attached	Plug Type	8oz cups/hr 236ml cups/hr	Input H ₂ O Temp.	Phase	# Wires plus Ground	Hertz
120	6	720	Yes	NEMA 5-15P	-	60°F (15.5°C)	1	2	60

*When a BUNN is machine rated 120/208-240V, 120/208V or 120/240V, the higher voltage is the supply voltage needed to power the machine. The 120V is there to supply power to some components rated 120V in the machine, but it is not the supply voltage and would not power the machine if the machine is marked with the before mentioned ratings.

Plumbing Requirements

PSI	kPa	Fitting Supplied	Water Flow Required (GPM)
20-100	138-689	3/8" Male Flare Fitting	-

CAD Drawings

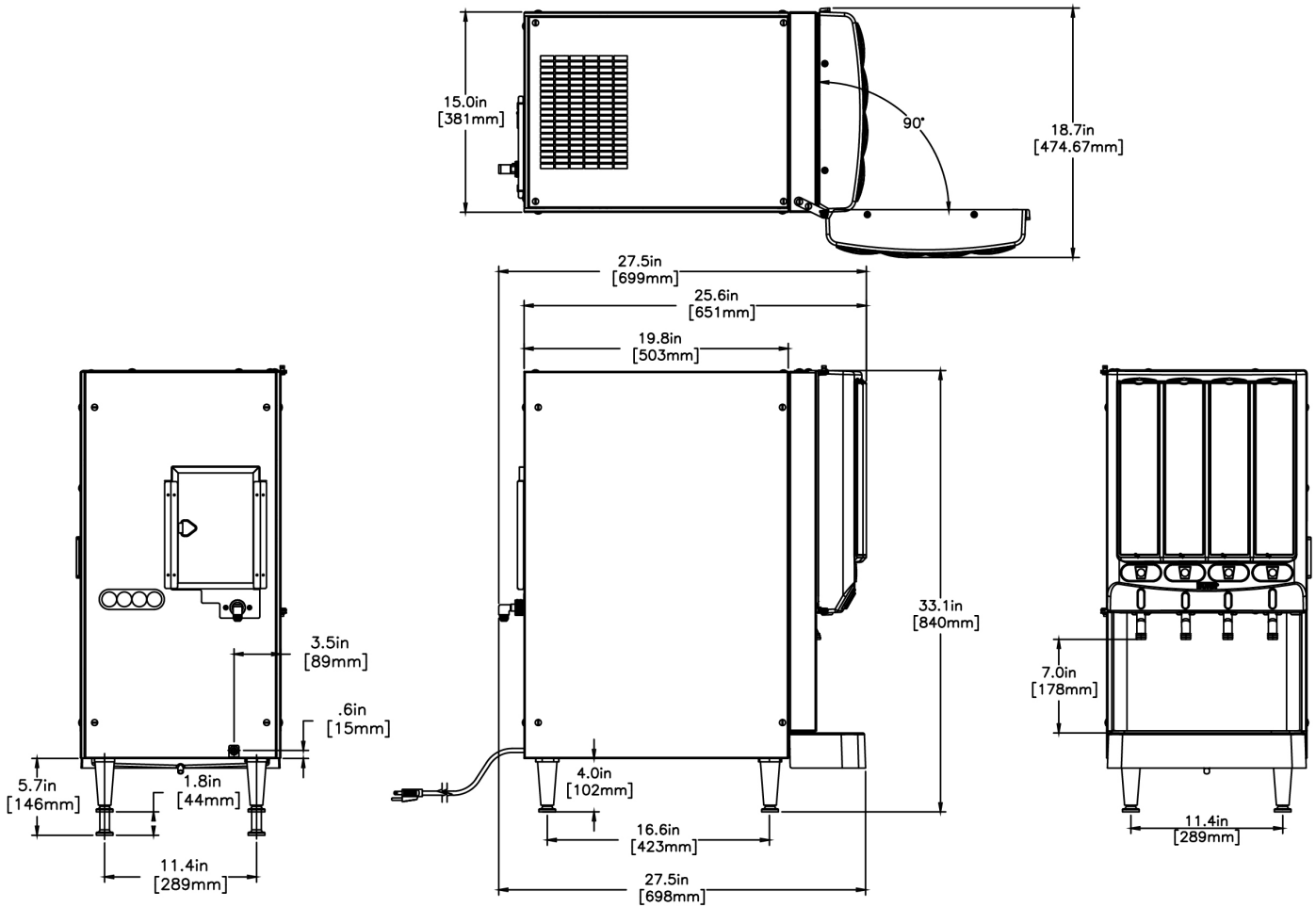
2D	Revit	KLC
●		

WARNING:



BUNN® reserves the right to change specifications and product design without notice. Such revisions do not entitle the buyer to corresponding changes, improvements, additions or replacements for previously purchased equipment. For most current specifications and other info visit bunn.com.

Last Updated:
02/24/2025




	Unit			Shipping				
	Height	Width	Depth	Height	Width	Depth	Weight	Volume
English	33.1 in.	15.7 in.	27.5 in.	43.7 in.	22.8 in.	30.5 in.	144.000 lbs	17.543 ft ³
Metric	84.1 cm	39.9 cm	69.9 cm	111.0 cm	57.8 cm	77.5 cm	65.318 kgs	0.497 m ³



BUNN® reserves the right to change specifications and product design without notice. Such revisions do not entitle the buyer to corresponding changes, improvements, additions or replacements for previously purchased equipment. For most current specifications and other info visit bunn.com.

Last Updated:
02/24/2025

Related Products & Accessories: JDF®-4S, 120V LIT PB W/4 SEG GFX(37300.0079)



KIT, AMBIENT CONC
CVRSN JDF-4

Product #: 33699.0001




CONTAINER ASSY,
REFILLABLE

Product #: 39302.0000



WIRE GRILL, DRIP TRAY
(JDF-4S)

Product #: 39613.0000



KIT, HOSE ASSY-PUMP
JDF-2S/4S

Product #: 39690.0000




TRAY, EXTENDED DRIP
JDF-4S

Product #: 40789.1000



KIT, SWITCH COVER-4
VLV PUSH & HOLD ONLY

Product #: 45541.1000



KIT, TST 4 VALVE MECH
SWITCH

Product #: 45541.1004



KIT, TST 4 VALVE OVAL
OVERLAY

Product #: 45541.1006



SYSTEM, WQ-55(2)5

Product #: 56000.0004



SYSTEM, WEQ-10(1.5)5

Product #: 56000.0027



CARTRIDGE, WQ-55(2)5

Product #: 56000.0104



CARTRIDGE, WEQ-10
(1.5)5

Product #: 56000.0122



Serving & Holding Options: JDF®-4S, 120V LIT PB W/4 SEG GFX(37300.0079)

Serving and Holding selections are currently unavailable. Please contact your sales representative to find out more information.



BUNN® reserves the right to change specifications and product design without notice. Such revisions do not entitle the buyer to corresponding changes, improvements, additions or replacements for previously purchased equipment. For most current specifications and other info visit bunn.com.

Last Updated:
02/24/2025