

Progress.



LEARN MORE

Epoxy-coated Super Erecta-style frames with removable polymer shelf mats.

Stays cleaner between cleanings.

Polymer shelf mats and Metroseal Green epoxy-coated shelf frames and posts have built in Microban® antimicrobial product protection.



Super Erecta Pro®

Durable & cleanable.
The original — reinnovated.



Easy to clean.

Lift-off mats can be easily removed and washed by hand or in a wash machine.

Prolonged durability.

Polymer shelf mats withstand daily abuse from containers and sharp edges. Robust design provides the strength and rigidity of Super Erecta...holds up to 800 lbs. (363kg) per shelf.



Interchangeable.

Super Erecta Pro shelves can be configured with traditional shelf and accessory options on the same unit for maximum flexibility.



Super Erecta® Pro Shelves — {10.80}

Shelves are priced individually and packaged no more than 4 per carton except 60" (1524mm) and 72" (1829mm) lengths which are packaged no more than 2 per carton. Plastic split sleeves are included with each shelf.



Nominal Width/Length (in./mm)		Cat. No. Super Erecta Pro Metroseal Green	Nominal Width/Length (in./mm)		Cat. No. Super Erecta Pro Metroseal Green
14x24	355x610	PR1424NK3	21x24	530x610	PR2124NK3
14x30	355x760	PR1430NK3	21x30	530x760	PR2130NK3
14x36	355x914	PR1436NK3	21x36	530x914	PR2136NK3
14x42	355x1060	PR1442NK3	21x42	530x1060	PR2142NK3
14x48	355x1219	PR1448NK3	21x48	530x1219	PR2148NK3
14x54	530x1372	-	21x54	530x1372	PR2154NK3
14x60	355x1524	PR1460NK3	21x60	530x1524	PR2160NK3
14x72	355x1829	PR1472NK3	21x72	530x1829	PR2172NK3
18x24	457x610	PR1824NK3	24x24	610x610	PR2424NK3
18x30	457x760	PR1830NK3	24x30	610x760	PR2430NK3
18x36	457x914	PR1836NK3	24x36	610x914	PR2436NK3
18x42	457x1060	PR1842NK3	24x42	610x1060	PR2442NK3
18x48	457x1219	PR1848NK3	24x48	610x1219	PR2448NK3
18x54	457x1372	PR1854NK3	24x54	610x1372	PR2454NK3
18x60	457x1524	PR1860NK3	24x60	610x1524	PR2460NK3
18x72	457x1829	PR1872NK3	24x72	610x1829	PR2472NK3



TRY NOW—IT'S SUPER EASY

Note: Each Super Erecta Pro™ shelf up to and including 48" (1219mm) long have a maximum weight capacity of 800 lbs. (363kg) evenly distributed. Shelves longer than 48" (1219mm) have a maximum weight capacity of 600 lbs. (272kg) evenly distributed.

Actual Dimensions: Width: Add .25" (6mm) to nominal size. Length: Subtract .25" (6mm) from nominal size.

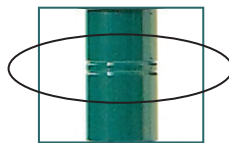
SHELVING HEIGHT GUIDELINES

Shelf Depth	14" (356mm)	18" (457mm)	21" (533mm)	24" (610mm)
Maximum Allowable Post Height				
Stationary	63" (1600mm)	86" (2184mm)	86" (2184mm)	96" (2438mm)

Note: For stationary units with foot plates or wall brackets properly attached to the floor or wall, the maximum allowable height is 96" (2438mm).

SiteSelect® Posts — {10.80}

Stationary Super Erecta SiteSelect posts are fitted with adjustable leveling bolts to compensate for uneven surfaces. Mobile posts come without leveling bolt assembly to accommodate stem casters. Special length posts are available. See page 58-59 for stem caster options.



Posts provide a visual guide for positioning and adjusting shelves with an easy-to-identify double groove, every 8" (203mm).



Super Erecta® Pro Easy Order Kits

Kit includes four shelves and four 74.5" (1892mm) split posts. Ships in one box.

Stationary Posts

Height (in.)	Height (mm)	Cat. No. Metroseal 3	Cat. No. Stainless
14.37	370	13PK3	13PS
34.37	875	33PK3	33PS
54.44	1385	54PK3	54PS
62.44	1590	63PK3	63PS
74.5	1895	74PK3	74PS
86.5	2200	86PK3	86PS

Note: Height includes post cap and leveling bolt (Completely tightened).

Mobile Posts

Height (in.)	Height (mm)	Cat. No. Metroseal 3	Cat. No. Stainless
13.75	349	13UPK3	13UPS
33.75	857	33UPK3	33UPS
53.81	1366	54UPK3	54UPS
61.81	1570	63UPK3	63UPS
69.75	1772	70UPK3	—
73.87	1876	74UPK3	74UPS
85.87	2181	86UPK3	86UPS

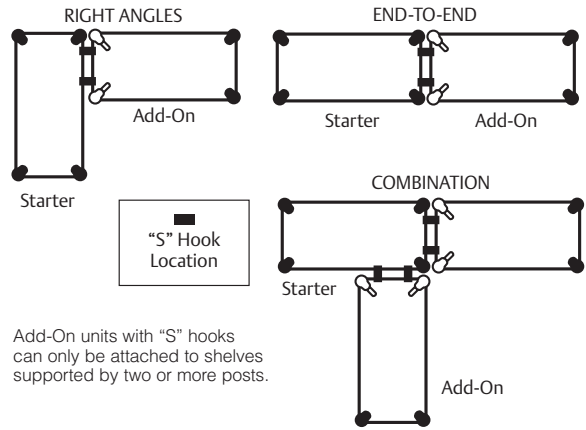
Nominal Width/Length (in./mm)	Approx. Pkd. Wt. (lbs./kg)	Cat. No. Super Erecta Pro Metroseal 3
18x36 (457x914)	58 26.3	EZPR1836NK3-4
18x48 (457x1219)	73 33.1	EZPR1848NK3-4
24x36 (610x914)	72 32.6	EZPR2436NK3-4
24x48 (610x1219)	83 37.6	EZPR2448NK3-4

✓ Indicates antimicrobial product.



Shelving Starter and Add-On Units — {10.82}

- Starter Units consist of four posts and indicated number of Super Erecta Pro shelves.
- Add-On Units consist of two posts, indicated number of shelves, and two “S” Hooks per shelf, for attaching shelf to adjacent unit.



4 Shelf **Super Erecta Pro**
Unit with 63" Posts

4 Shelf **Super Erecta Pro**
Unit with 74" Posts

Nominal Width/Length (in./mm)	Cat. No. Starter Unit	Cat. No. Add-On Unit	Cat. No. Starter Unit	Cat. No. Add-On Unit
18x24 457x610	PR-182463K3-S-4	PR-182463K3-A-4	PR-182474K3-S-4	PR-182474K3-A-4
18x30 457x760	PR-183063K3-S-4	PR-183063K3-A-4	PR-183074K3-S-4	PR-183074K3-A-4
18x36 457x914	PR-183663K3-S-4	PR-183663K3-A-4	PR-183674K3-S-4	PR-183674K3-A-4
18x42 457x1060	PR-184263K3-S-4	PR-184263K3-A-4	PR-184274K3-S-4	PR-184274K3-A-4
18x48 457x1219	PR-184863K3-S-4	PR-184863K3-A-4	PR-184874K3-S-4	PR-184874K3-A-4
18x54 457x1372	PR-185463K3-S-4	PR-185463K3-A-4	PR-185474K3-S-4	PR-185474K3-A-4
18x60 457x1524	PR-186063K3-S-4	PR-186063K3-A-4	PR-186074K3-S-4	PR-186074K3-A-4
18x72 457x1829	PR-187263K3-S-4	PR-187263K3-A-4	PR-187274K3-S-4	PR-187274K3-A-4
21x24 530x610	PR-212463K3-S-4	PR-212463K3-A-4	PR-212474K3-S-4	PR-212474K3-A-4
21x30 530x760	PR-213063K3-S-4	PR-213063K3-A-4	PR-213074K3-S-4	PR-213074K3-A-4
21x36 530x914	PR-213663K3-S-4	PR-213663K3-A-4	PR-213674K3-S-4	PR-213674K3-A-4
21x42 530x1060	PR-214263K3-S-4	PR-214263K3-A-4	PR-214274K3-S-4	PR-214274K3-A-4
21x48 530x1219	PR-214863K3-S-4	PR-214863K3-A-4	PR-214874K3-S-4	PR-214874K3-A-4
21x54 530x1372	PR-215463K3-S-4	PR-215463K3-A-4	PR-215474K3-S-4	PR-215474K3-A-4
21x60 530x1524	PR-216063K3-S-4	PR-216063K3-A-4	PR-216074K3-S-4	PR-216074K3-A-4
21x72 530x1829	PR-217263K3-S-4	PR-217263K3-A-4	PR-217274K3-S-4	PR-217274K3-A-4
24x24 610x610	PR-242463K3-S-4	PR-242463K3-A-4	PR-242474K3-S-4	PR-242474K3-A-4
24x30 610x760	PR-243063K3-S-4	PR-243063K3-A-4	PR-243074K3-S-4	PR-243074K3-A-4
24x36 610x914	PR-243663K3-S-4	PR-243663K3-A-4	PR-243674K3-S-4	PR-243674K3-A-4
24x42 610x1060	PR-244263K3-S-4	PR-244263K3-A-4	PR-244274K3-S-4	PR-244274K3-A-4
24x48 610x1219	PR-244863K3-S-4	PR-244863K3-A-4	PR-244874K3-S-4	PR-244874K3-A-4
24x54 610x1372	PR-245463K3-S-4	PR-245463K3-A-4	PR-245474K3-S-4	PR-245474K3-A-4
24x60 610x1524	PR-246063K3-S-4	PR-246063K3-A-4	PR-246074K3-S-4	PR-246074K3-A-4
24x72 610x1829	PR-247263K3-S-4	PR-247263K3-A-4	PR-247274K3-S-4	PR-247274K3-A-4

Starter Unit



Add-On Unit



Add-On Units ship with (8) “S” Hooks

For additional wire shelves, order from page 37.



“S” Hooks

Eliminates the need for adjacent posts.
Two required for each storage level.
Cat. No. Q9995Z

Can be used to configure end-to-end and right angle (corner) add-on units.

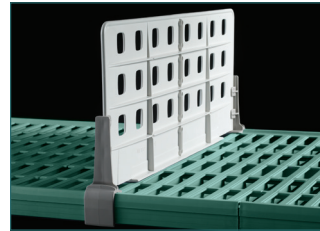
Accessories — {10.81}

8" Polymer Divider

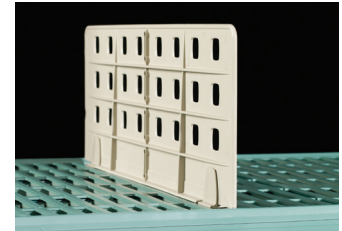
- Corrosion proof

Nominal Length (in.)	(mm)	Standard Duty Cat. No.	Light Duty Cat. No.
18	457	MQD18-8	MUD18-8
24	610	MQD24-8	MUD24-8

Note: MUD18-8 Divider fits 21" deep shelf.



Standard Duty

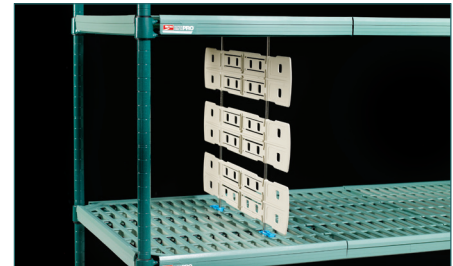


Light Duty

Tall Shelf-to-Shelf Divider

- Connects between two shelves
- Corrosion proof

Nominal Height (in.)	(mm)	Compatible with Shelf Depths (in.) (mm)		Cat. No.
16	406	18, 21	457, 530	MD18-16
20	508	18, 21	457, 530	MD18-20
24	610	18, 21	457, 530	MD18-24
16	406	24	610	MD24-16
20	508	24	610	MD24-20
24	610	24	610	MD24-24



Shelf Ledges

- Corrosion proof, 2" (51mm) stackable shelf ledges.



Nominal Length (in.)	(mm)	Cat. No.
18	457	PRL18-2S
21	530	PRL21-2S
24	610	PRL24-2S
36	914	PRL36-2S
42	1060	PRL42-2S
48	1219	PRL48-2S
60	1524	PRL60-2S
72	1829	PRL72-2S



SB ShelfBuilder

The easiest way to build Shelving.

Color Shelf Marker

- 6" (152mm) Length
- Fits Super Erecta Pro Shelf
- Attach easily to shelf to identify contents stored.



Color	Length		Cat. No.
	(in.)	(mm)	
Blue	6	152	CSM6-BQ
Green	6	152	CSM6-GQ
Red	6	152	CSM6-RQ
Tan	6	152	CSM6-TQ
White	6	152	CSM6-WQ
Yellow	6	152	CSM6-YQ
Gray	6	152	CSM6-GRQ



Label Holders

- Fits Super Erecta Pro Shelf
 - Plastic holders snap into place to accommodate 1" (25mm) tall adhesive label.
- Cat. No. **MQ04LH**

Indicates antimicrobial product.