

# {13.20}



## Metro HotBlox™ Holding Cabinets



**Narrow 4-Pan (N4)**  
Holds 12x20 / GN,  
and 13 x 18 pans



**Narrow 8-Pan (N8)**  
Holds 12x20 / GN,  
and 13 x 18 pans



**Wide 8-Pan (W8)**  
Holds 18 x 26 pans, 12x20 / GN,  
and 13 x 18 pans



### Versatile, right-sized holding that adapts to your unique space & menu needs.

- **3 Space Efficient Sizes:** to fit under counters, on top of counters, in narrow spaces, or stacked on top of each other
- **Flexibility:** to hold moist or crispy food with the same cabinet using Metro's hybrid convection – radiant heating technology. Switch from one style of food to another throughout the day or stack multiple units and hold different types of food in the same vertical space!
  - > **Built-in venting:** Convection powered system draws humidity up and releases out a rear vent while door vent intakes dry replacement air to help maintain crispiness & release humidity given off by food.
  - > **Radiant floor element:** Place a pan of water on the floor to create moisture and keep moist food moist.
- **Digital Touchscreen Control Option:** displays relative humidity levels inside the cabinet to help maintain better food quality. Programmable timers help manage holding times and first-in-first-out (FIFO), giving better control over food quality & consistency. USB port with built-in HACCP data logging to enhance food safety. Help / training support that quickly links you to valuable resources so everything you need is at your fingertips.
- **Simple Analog Control Option:** Electro-mechanical thermostat and “always-on” thermometer is a more cost effective option and ideal for transport applications.
- **Doors:** Solid insulated for better energy efficiency & rigidity, clear polycarbonate to view internal contents. Reach-in and pass-thru configurations available.

Customize your holding. 3 Sizes.  
Multiple Ways. Moist or Crispy.



Metro Heated cabinets are for hot food holding applications only.

All Metro Catalog Sheets are available on our website: [metro.com](http://metro.com)

# {13.20} Metro HotBlox™ Holding Cabinets



## N4

### Narrow 4 Pan Configurations



#### Reach-In Models

Size	(in.)	20Wx25.6Dx19.2H	20Wx25.6Dx24.5H
	(mm)	508Wx650Dx488H	508Wx650Dx622H
Analog Control	Solid Door	HBCN4-AS-CT	HBCN4-AS-UC
	Clear Door	HBCN4-AC-CT	HBCN4-AC-UC
Digital Control	Solid Door	HBCN4-DS-CT	HBCN4-DS-UC
	Clear Door	HBCN4-DC-CT	HBCN4-DC-UC

Pan Capacities	12x20x2.5 / GN (65 mm)	4 / 4	4 / 4
	Wire / Adj. Slides	4 / 4	4 / 4

**ELECTRICAL SPECIFICATIONS** 120V, 60Hz, 875W / NEMA 5-15P

Notes:

- For 220-240V, 50/60Hz option, add "X" to 120V model number (ie- HBCN4-AXS-CT, 735-875W, NEMA 6-15P plug). For SABER certification, add HBC-SA-CORD option.
- For cabinets with accessories, add "A" to model number (ie- HBCN4-AS-CTA)
- Deeper 12x20/GN capacities - (4"/100mm)=2, (6"/150mm)=1
- Placing 1/2 sheet pan on floor for moisture will reduce 12x20x2.5/GN (65 mm) capacity by 1 pan (wire & adj slides)

#### Pass-Thru Models

Size	(in.)	20W x 27.2D x 19.2H	20W x 27.2D x 24.5H
	(mm)	508W x 690D x 488H	508W x 690D x 622H
Analog Control	Solid / Solid Doors	HBCN4-ASPS-CT	HBCN4-ASPS-UC
	Solid / Clear Doors	HBCN4-ASPC-CT	HBCN4-ASPC-UC
	Clear / Clear Doors	HBCN4-ACPC-CT	HBCN4-ACPC-UC
	Clear / Solid Doors	HBCN4-ACPS-CT	HBCN4-ACPS-UC
Digital Control	Solid / Solid Doors	HBCN4-DSPS-CT	HBCN4-DSPS-UC
	Solid / Clear Doors	HBCN4-DSPC-CT	HBCN4-DSPC-UC
	Clear / Clear Doors	HBCN4-DCPC-CT	HBCN4-DCPC-UC
	Clear / Solid Doors	HBCN4-DCPS-CT	HBCN4-DCPS-UC

Pan Capacities	12x20x2.5 / GN (65 mm)	4 / 4	4 / 4
	Wire / Adj. Slides	4 / 4	4 / 4

**ELECTRICAL SPECIFICATIONS** 120V, 60Hz, 875W / NEMA 5-15P

## N8

### Narrow 8 Pan Configurations



#### Reach-In Models

Size	(in.)	20Wx25.6Dx30.3H	20Wx25.6Dx31.9H	20Wx25.6Dx35.5H	24Wx29.4Dx35.8H	20Wx25.6Dx66.7H	24Wx29.4Dx67H
	(mm)	508Wx650Dx770H	508Wx650Dx811H	508Wx650Dx902H	610Wx747Dx909H	508Wx650Dx1694H	610Wx747Dx1702H
Analog Control	Solid Door	HBCN8-AS-CT	HBCN8-AS-UC	HBCN8-AS-M	HBCN8-AS-T	HBCN16-AS-M	HBCN16-AS-T
	Clear Door	HBCN8-AC-CT	HBCN8-AC-UC	HBCN8-AC-M		HBCN16-AC-M	
Digital Control	Solid Door	HBCN8-DS-CT	HBCN8-DS-UC	HBCN8-DS-M		HBCN16-DS-M	
	Clear Door	HBCN8-DC-CT	HBCN8-DC-UC	HBCN8-DC-M		HBCN16-DC-M	

#### Pass-Thru Models

Size	(in.)	20W x 27.2D x 30.3H	20W x 27.2D x 31.9H	20W x 27.2D x 35.5H	N/A	20W x 27.2D x 66.7H	N/A
	(mm)	508W x 690D x 770H	508W x 690D x 811H	508W x 690D x 902H	N/A	508W x 690D x 1694H	N/A
Analog Control	Solid / Solid Doors	HBCN8-ASPS-CT	HBCN8-ASPS-UC	HBCN8-ASPS-M	-	HBCN16-ASPS-M	-
	Solid / Clear Doors	HBCN8-ASPC-CT	HBCN8-ASPC-UC	HBCN8-ASPC-M	-	HBCN16-ASPC-M	-
	Clear / Clear Doors	HBCN8-ACPC-CT	HBCN8-ACPC-UC	HBCN8-ACPC-M	-	HBCN16-ACPC-M	-
	Clear / Solid Doors	HBCN8-ACPS-CT	HBCN8-ACPS-UC	HBCN8-ACPS-M	-	HBCN16-ACPS-M	-
Digital Control	Solid / Solid Doors	HBCN8-DSPS-CT	HBCN8-DSPS-UC	HBCN8-DSPS-M	-	HBCN16-DSPS-M	-
	Solid / Clear Doors	HBCN8-DSPC-CT	HBCN8-DSPC-UC	HBCN8-DSPC-M	-	HBCN16-DSPC-M	-
	Clear / Clear Doors	HBCN8-DCPC-CT	HBCN8-DCPC-UC	HBCN8-DCPC-M	-	HBCN16-DCPC-M	-
	Clear / Solid Doors	HBCN8-DCPS-CT	HBCN8-DCPS-UC	HBCN8-DCPS-M	-	HBCN16-DCPS-M	-

Pan Capacities	12x20x2.5 / GN (65 mm)	8 / 7	8 / 7	8 / 7	8 / 7	16 / 14	16 / 14
	Wire / Adj. Slides	13x18	8 / 8	8 / 8	8 / 8	16 / 16	16 / 16

**ELECTRICAL SPECIFICATIONS** 120V, 60Hz, 875W / NEMA 5-15P (2X) 120V, 60Hz, 875W / NEMA 5-15P 2 Stacked Cabinets, 2 Power Cords, Total 1750W

Notes:

- For 220-240V, 50/60Hz option, add "X" to 120V model number (ie- HBCN8-AXS-CT, 735-875W, NEMA 6-15P plug) (ie- HBCN16-AXS-CT, 735-875W X2, NEMA 6-15P X2). For SABER certification, add HBC-SA-CORD option.
- For cabinets with accessories, add "A" to model number (ie- HBCN8-AS-CTA)
- Deeper 12x20/GN capacities - (4"/100mm)=5, (6"/150mm)=3 (per cavity)
- Placing 1/2 sheet pan on floor for moisture will reduce 12x20x2.5/GN (65mm) capacity by 1 pan (wire slides)

## W8 Wide 8 Pan Configurations



### Reach-In Models

		Countertop / Stacking	Under Counter	1/2 Height	1/2 Height Transport	Dual Cavity	Dual Cavity Transport
Size	(in.)	25Wx30.6Dx30.3H	25Wx30.6Dx31.9H	25Wx30.6Dx35.5H	29Wx34.4Dx35.8H	25Wx30.6Dx66.7H	29Wx 34.4Dx 67H
	(mm)	635Wx777Dx770H	635Wx777Dx811H	635Wx777Dx902H	737Wx874Dx909H	635Wx777Dx1694H	737Wx 874Dx1702H
Analog Control	Solid Door	<b>HBCW8-AS-CT</b>	<b>HBCW8-AS-UC</b>	<b>HBCW8-AS-M</b>	<b>HBCW8-AS-T</b>	<b>HBCW16-AS-M</b>	<b>HBCW16-AS-T</b>
	Clear Door	<b>HBCW8-AC-CT</b>	<b>HBCW8-AC-UC</b>	<b>HBCW8-AC-M</b>		<b>HBCW16-AC-M</b>	
Digital Control	Solid Door	<b>HBCW8-DS-CT</b>	<b>HBCW8-DS-UC</b>	<b>HBCW8-DS-M</b>		<b>HBCW16-DS-M</b>	
	Clear Door	<b>HBCW8-DC-CT</b>	<b>HBCW8-DC-UC</b>	<b>HBCW8-DC-M</b>		<b>HBCW16-DC-M</b>	

### Pass-Thru Models

Size	(in.)	25W x 32.2D x 30.3H	25W x 32.2D x 31.9H	25W x 32.2D x 35.5H	N/A	25W x 32.2D x 66.7H	N/A
	(mm)	635W x 818D x 770H	635W x 818D x 811H	635W x 818D x 902H	N/A	635W x 818D x 1694H	N/A
Analog Control	Solid / Solid Doors	<b>HBCW8-ASPS-CT</b>	<b>HBCW8-ASPS-UC</b>	<b>HBCW8-ASPS-M</b>	-	<b>HBCW16-ASPS-M</b>	-
	Solid / Clear Doors	<b>HBCW8-ASPC-CT</b>	<b>HBCW8-ASPC-UC</b>	<b>HBCW8-ASPC-M</b>	-	<b>HBCW16-ASPC-M</b>	-
	Clear / Clear Doors	<b>HBCW8-ACPC-CT</b>	<b>HBCW8-ACPC-UC</b>	<b>HBCW8-ACPC-M</b>	-	<b>HBCW16-ACPC-M</b>	-
	Clear / Solid Doors	<b>HBCW8-ACPS-CT</b>	<b>HBCW8-ACPS-UC</b>	<b>HBCW8-ACPS-M</b>	-	<b>HBCW16-ACPS-M</b>	-
Digital Control	Solid / Solid Doors	<b>HBCW8-DSPS-CT</b>	<b>HBCW8-DSPS-UC</b>	<b>HBCW8-DSPS-M</b>	-	<b>HBCW16-DSPS-M</b>	-
	Solid / Clear Doors	<b>HBCW8-DSPC-CT</b>	<b>HBCW8-DSPC-UC</b>	<b>HBCW8-DSPC-M</b>	-	<b>HBCW16-DSPC-M</b>	-
	Clear / Clear Doors	<b>HBCW8-DCPC-CT</b>	<b>HBCW8-DCPC-UC</b>	<b>HBCW8-DCPC-M</b>	-	<b>HBCW16-DCPC-M</b>	-
	Clear / Solid Doors	<b>HBCW8-DCPS-CT</b>	<b>HBCW8-DCPS-UC</b>	<b>HBCW8-DCPS-M</b>	-	<b>HBCW16-DCPS-M</b>	-
Pan Capacities	12x20x2.5 / GN (65 mm)	8 / 7	8 / 7	8 / 7	8 / 7	16 / 14	16 / 14
	18x26	8 / 8	8 / 8	8 / 8	8 / 8	16 / 16	16 / 16
	13x18	16 / 16	16 / 16	16 / 16	16 / 16	32 / 32	32 / 32
<b>ELECTRICAL SPECIFICATIONS</b>		120V, 60Hz, 875W / NEMA 5-15P				<b>(2X)</b> 120V, 60Hz, 875W / NEMA 5-15P 2 Stacked Cabinets, 2 Power Cords, Total 1750W	

#### Notes:

- For 220-240V, 50/60Hz option, add "X" to 120V model number (ie- HBCN8-AXS-CT, 735-875W, NEMA 6-15P plug) (ie- HBCN16-AXS-CT, 735-875W X2, NEMA 6-15P X2). For SABER certification, add HBC-SA-CORD option.
- For cabinets with accessories, add "A" to model number (ie- HBCW8-AS-CTA)
- Deeper 12x20/GN capacities - (4"/100mm)=5, (6"/150mm)=3 (per cavity)
- Placing sheet pan on floor for moisture will reduce wire capacity by 1 pan for 12x20x2.5/GN (65mm) and 12x20x6/GN (150mm). Will reduce adjustable slide capacity for 12x20x4/GN (100mm) by 1 pan.

## Specifications

**Cabinet Construction:** .063" (1.8 mm) thick aluminum body with high-density fiberglass insulation.

#### Feet / Casters:

- All countertop / stacking configurations supplied with 1" rubber feet
- N4 under counter supplied with 5" (127 mm) neoprene casters, N8 & W8 with 2" (51 mm) polyolifin casters
- ½ height & dual cavity cabinets supplied with 5" (127 mm) neoprene casters

**Solid Doors:** .063" (1.8 mm) aluminum with welded corners, insulated with 1" (25.4 mm) thick fiberglass insulation with adjustable fresh air intake vent. Field reversible, double hinged, 180° swing.

**Clear Doors:** .063" (1.8 mm) aluminum with welded corners, polycarbonate window. Each door includes adjustable fresh air intake vent. Field reversible, double hinged, 180° swing.

**Door Latch:** Flush mounted, chrome plated high strength magnetic latch with lever action release.

**Door Gaskets:** High temperature, cabinet mounted santoprene gaskets. Removable without tools.

**Wire Pan Slides (Standard):** Nickel chrome plated fixed wire, spaced on 2.75" (70 mm) centers.

**Adjustable Pan Slides (Upgrade):** .100" (2.54 mm) thick aluminum slides, adjustable on 1 3/8" (35 mm) increments. Slides install flat, or slanted for improved visibility & easier access to pick product. N4/N8 models slant 4.6° or 9.2° W8 models slant 3.7° or 7.4°.

**Power Cord:** 6' (183 cm) long cord with NEMA 5-15P plug on 120V models and NEMA 6-15P on 220-240V models. Optional 220-240V HBC-SA-CORD with BS-1363 plug for SABER certification.

**Heating System:** Thermostatically controlled hybrid convection / radiant system. 675W heating element, circulating fan, ducted air circulation with 200W radiant heating element under floor surface

**Performance:** 90°F (32°C) to 190°F (88°C) temperature range. Achievable humidity with pan of water on floor at 160°F (71°C) is approximately 33% RH

**Transport Package:** Includes full perimeter bumper, travel latch / hasp, and swing-up rear handle.

**Recommended Clearances for Enclosures:** 1.5" (38 mm) on cabinet sides and back. Always maintain at least 1" of space under cabinet to countertop surface.

**Stacking Requirements:** Maximum stacked height shall never exceed 68" (1727 mm). Maximum (2) N8 (2) W8, or (3) N4 cabinets per stacked unit. Stacked cabinets must maintain 2" (51 mm) spacing using proper stacking kit with proper ventilation.

# {13.20}



## Metro HotBlox™ Holding Cabinets

### Options & Accessories



Factory Left Hand Hinging  
**HBC-LHINGE**



6" Transport Caster  
**HBC-T6CASTER**  
*(Only available on transport cabinets)*



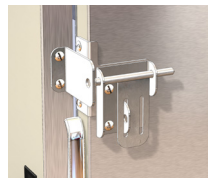
6" Stationary Legs  
**HBC-6LEGS**



Switch Cover (digital models)  
**HBC-SWITCHCVR**



Offset Door Latch  
**HBC-OFFLATCH**



Travel Latch / Hasp  
(Right hinged door)  
**HBC-TRVL**

Travel Latch / Hasp  
(Left hinged door)  
**HBC-LTRVL**

*(Not available on N4 models)*

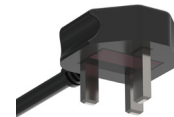


Swing-Up Handle for N8 models  
**HBC-NHANDLE**

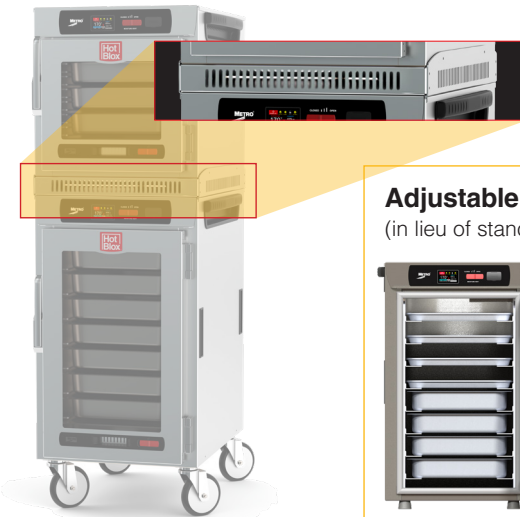
Swing-Up Handle for W8 models  
**HBC-WHANDLE**  
*(Not available for N4 models)*



Same-Side  
Pass-Thru  
Door Hinging  
**HBC-SAMESIDE**



BS-1363 UK plug end  
for SABER certification  
**HBC-SA-CORD**



Stacking Kit for N4, N8 models  
**HBC-NSTACK**  
Stacking Kit for W8 models  
**HBC-WSTACK**

### Adjustable Slide Upgrade (in lieu of standard)



**HBC-N4-ADJSLIDE**  
**HBC-N8-ADJSLIDE**  
**HBC-N16-ADJSLIDE**

**HBC-W8-ADJSLIDE**  
**HBC-W16-ADJSLIDE**

